

NEW LIFE

LUTHERAN CHURCH

3521 East Orange • Pearland, Texas 77581
 281-485-1818 • Fax 281-485-2535
www.newlifelutheran.com

 NewLifeinPearland

Sunday's Cool @ 9:15 am • Worship @ 8:00 am & 10:30 am



An emerging ministry of
 The Evangelical Lutheran Church in America

Hang On



Don't Let Go

The Lifeline

Mark Your Calendars

Mondays August 5th, 12th, 19th & 26th

Modified Yoga @ 6pm
 Houseband Practice

Tuesdays, August 6th, 13th, 20th & 27th

Quilting Workshop

Thursday, August 1st

Property Team Meeting

Wednesday, August 7th

Seniors (55+) Lunch

Sundays, August 18th & 25th

LYO - Lutheran Youth Organization - Lunch

Thursday, August 8th

Bazaar Meeting

GLOW Meeting

Saturday, August 10th

New Life Campus CleanUp/Prep for SS

Sunday, August 11th

Rally Day/Backpack Blessing

Teacher Recognition/All Church Picnic

Monday, August 12th

Church Council

Tuesday, August 13th

Coastal Bay Conference Leaders Meeting

Wednesday, August 14th

WELCA Lunch @ Busy Bee

Friday, August 16th – Sunday, August 18th

WELCA Retreat at Lutherhill

Tuesday, August 20th

Men's Night Out – Speaker

Wednesday, August 21st

Mary Martha Bible Study

Friday, August 23rd

WOW – Women of Worth – Bazaar Crafts

Note:

The Office is now closed on Fridays

August 2019



Table of Contents

| | |
|---|-------|
| Pastor's Ponderings | 2 |
| Church Council President Rudy Moreno | 3 |
| "Jesus ON Jesus" Sermon series completes | 3 |
| Rally Day/Backpack Blessing | 4 |
| Teacher Recognition/ALL Church Picnic | |
| LWR School Kit info for September packing | |
| Youth & Family Ministry: - Sang Kim | 5 |
| Youth go to the Grand Canyon | |
| "WONDER" Tour Pics | 6 |
| Former Youth group goes to Lake LBJ | 7 |
| Seniors' & Volunteer Opportunities, Men in Mission & Prayer Shawl Ministries | |
| UpBring gathers school supplies | 8 |
| Women's News, Bible Study, WOW, Quilters | 9 |
| Thank You's! | 10 |
| EnviroNews & Turtle Patrol Wrap Up | 11 |
| Thrivent Card Update and Needs | |
| Hurricane Preparedness | 12 |
| Directory Update: MOW Need | 13 |
| Kroger, GLOW - God's Work, Our Hands | |
| Coffee Hour - CHH Needs | 14 |
| Property updates (Lawncare & Property Needs) | 15 |
| Sunday's Cool Class info | 16-17 |
| "Jesus on Jesus" class – Sundays | 16 |
| God Works Book by Pastor Gige | 16 |
| Lutherhill Retreat/Camp pics | 17 |
| Prayer Page | 18 |
| ELCA Daily Prayer Ventures | 19-20 |
| Birthdays, Baptism & Weddings Anniversaries | 21 |
| Church Leader Contact Information | 22 |
| Helping Hands in Worship | 23 |
| Monthly Calendar | 24 |



PASTOR'S PONDERINGS...

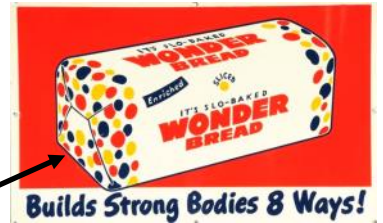
...for people like us...

... in times like this...

“WHEN THE CHURCH IS THE CHURCH!”

Dear friends & followers @ New Life,

Before I was in grade school until 8th grade my dad was THE “bread winner” at our house! How? He drove a the Wonder Bread truck and had his own route including grocery stores and unfolding fast-food chains like McDonald’s, The Red Barn and Burger King. It was a good job for him. He felt like he was doing something good for others. He was most proud of the plaque on the side of his truck “SAFE DRIVER—12 Years.” Life was good and every day in school my lunch was filled with Twinkies, Cupcakes, Ho-Ho’s or a fruit pie! At Halloween time my dad would bring home boxes of small 8 oz. miniature loaves of Wonder Bread that my parents handed to “trick-or-treaters” who came to the door while my friends and I wandered the neighborhood for candy and gum. My school friends bring that memory up from time to time when I find myself back in Ohio. The label on the loaf was filled with slogan... “It’s Slo-Baked” and the radio announcer would say... “Wonder Bread with the Red, Yellow & Blue balloons printed on the wrapper” and then this one... **Builds Strong Bodies 8 Ways!** If you don’t believe me or never saw a Wonder Bread wrapper check this out... what American parent didn’t want that for their child in 1965?



What makes us strong? Bread helps, but there’s more to it than that; especially in the Church! In the Book of the *Acts of the Apostles*, there is a description of what the early church did and how they watched out for each other...

“They devoted themselves to the apostles’ teaching and to fellowship, to the breaking of bread and to prayer. ⁴³ Everyone was filled with awe at the many wonders and signs performed by the apostles.” (ACTS 2:42-43)

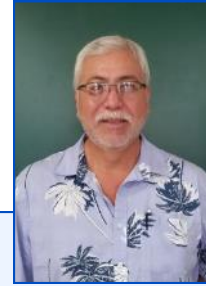
This is the first true biblical reference the church being the church! It is an image we must never forget as well as seek ways to keep this at the heart of New Life’s work and ministry...

In the midst of lives that were at risk daily, the disciples followed the command of Jesus to baptize, preach and teach and as they did the people who claimed Christ as Lord made sure certain things happened. They made sure they learned as much of Jesus’ way as possible; they made worship a priority and ‘remembered’ Jesus at the Lord’s Supper; they prayed *for* and *with* each other they played with each other. Staying close like this provided protection in a time when faith in Jesus was a crime.

We don’t have 8 ways... and we are concerned about our “whole-life” not just our bodies... so as our “*Back to School*” celebration on **August 11** announces a new time at New Life... take time to review the 7 Faith practices we share... PRAY, WORSHIP, STUDY, INVITE, ENCOURAGE, GIVE & SERVE! For as we do, this is when we find the church that is us... being the church that we need!

Bmi

+++ PRAY + WORSHIP + STUDY + INVITE + ENCOURAGE + GIVE + SERVE +++



Dear Brothers and Sisters in Christ,

What a great and challenging summer we have had. Summer is just about over and we should have a great time in fellowship at the Rally Day Picnic.

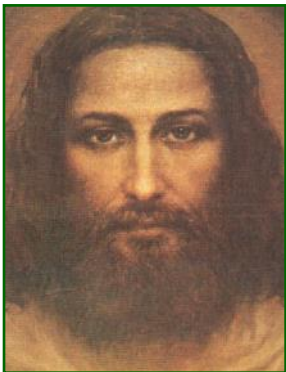
I want to thank all of you that have so generously given to help relieve our IRS debt. Our CPA could hardly believe how much money was raised in such a short amount of time. We have raised over 80,000 dollars. I let him know that it is because of the great love of this congregation and it's ministry that this was possible.

We are currently awaiting a letter from the IRS to see if they have approved our offer of a settlement. Just keep praying and wish us luck. I feel confident about our situation ,but it is just a matter of time to figure our next step. I will keep you all informed as our situation changes.

Have a great month and hope to see all of you at the picnic.

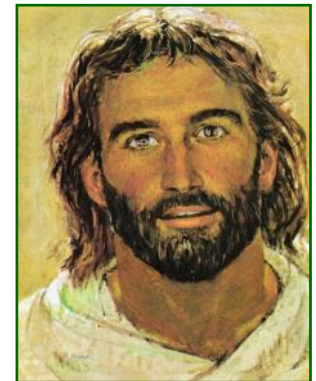
In Christ,

Rudy Moreno
2019 Church Council President
281-734-5019



JESUS ON JESUS

Messages on the self-defined and self-differentiated Jesus



- ◆ Everyone has thoughts and opinions about Jesus!
- ◆ Who did Jesus think he was?
- ◆ What did Jesus say about Jesus?
- ◆ Why does Jesus' self-defined life matter?



"This may be one of the most important series of messages I've shared in over 20 years!"

-Pastor Gige

August 4th - "The King & Me"

August 11th - "The Little Child Teaches"

Sunday School RALLY DAY

**Sunday,
August
11th**



**Blessing
of the
Backpacks**

When: Sunday, August 11th

What: Rally Day - Sunday's Cool Kickoff - Backpack Blessing

Who: Everyone!

**During Sunday's Cool time - Backpack Blessing (apx. 9:30am),
Teacher Recognition, Meet the teacher, Discover classrooms**

After the second service - Lunch for all!

Meat will be provided

**Congregation brings sides and desserts
(see the Buddy Board for ideas)**



Please RSVP to

communitylife@newlifelutheran.com

Weather/Heat permitting: outdoor activities



Lutheran World Relief School Backpacks



INCLUDE THE FOLLOWING ITEMS IN EACH SCHOOL KIT:



One sturdy drawing/backpack-style cloth bag, approximately 16" x 21", with shoulder straps (no standard backpacks)



Four 70-sheet notebooks of wide- or college-ruled paper, approximately 8" x 10 1/2"; no loose-leaf paper



One box of 24 or 24 crayons



One 30-centimeter ruler, or a ruler with centimeters on one side and inches on the other



One pencil sharpener



One pair of blunt scissors (safety scissors with embedded steel blades work well)



Five unsharpened No. 2 pencils with erasers; secure together with a rubber band



Five black or blue ballpoint pens (no gel ink); secure together with a rubber band



One 2 1/2" eraser

Everyone is invited to bring school supplies to help New Life Seniors pack 200 kits on Wednesday, September 4th.

Please drop off Supplies on or before Sunday, September 1st.



Youth & Family

Hello, New Life Church family,



As I write this, the summer is quickly coming to a close, and school will be upon your kids very soon (yeah, parents!). On July 21, we had our annual Sunday School teachers (usually) / parents (this year) planning meeting. I sincerely give thanks for the new faces that attended like Bryan, Samantha, Abby and Jamie. Their participation and contribution for 2019-2020 will be invaluable. Thanks to Aimee for running the show and planning the year. As always, thanks to Mary Ann, Julia and Linda, as well.

Because of you, we sent 2 boys to Lutherhill Summer Camp: Sonny Boy & Sabastian. It's my pleasure to drive them and pick them up on Friday, July 26. By the time you read this, we will be on the road to Grand Canyon for a week-long trip (July 27 to August 3). We are renting a van; Jenaro and Aimee are driving and being an adult presence. I really appreciate the students who are able to attend and enjoy this incredible part of the Lord's creation. The group includes the 4 Castillo family members, John Russell, Michael, Sonny Boy and Sabastian and me. I saw Grand Canyon in May of 2010. Just, wow. Spectacular. I went with a bunch of Korean pastors, and I was good and sick. I look forward to attending with my present brothers and sisters.

On Sunday, August 11, Rally Day will be celebrated with all the bells and whistles of backpack blessing and meeting your new Sunday School teachers. We have always had a great turnout so we are expecting to see you there as well as start off a great year of Sunday School with better and excellent attendance. Please see me for the names and phone numbers of students who are in a similar demographic as your child. This is so that you will call one another, spend time with one another and grow in fellowship and friendship with one another. The Sunday School theme this year is "Wonder."

The Scripture is from Psalm 66:5-6

"Take a good look at God's wonders – they'll take your breath away.

He converted sea to dry land; travelers crossed the river on foot. Now isn't that cause for a song?"

Yes, I am going to tell you about Lutherhill 2020: the confirmation date will most likely be in July so I beckon you to register as early as December so you can get a major discount in your registration as well as make that the priority for your teenager who can attend next summer. This summer we had a variety of scheduling problems which included moving the date around as well as dealing with priority issues. Thus, I truly hope this will be your priority for your confirmation aged teenager. Finally, the cost for registration is 30% of the cost (payable online when registering) while the other 70% is from the budget and general funds of the church. Here are retreat dates for the fall and spring of 2019 and 2020 (even for adult women!):

[CONVERGE](#) Nov. 8-10, 2019 A Gathering for 6th – 8th grade youth to laugh and learn.
[WORSHIP. LEAD. SERVE.](#) Feb. 7-9, 2020 A gathering for 9th–12th grade youth to practice discipleship.
[UNWIND](#) March 6-8, 2020 Renew your body and spirit with your favorite female friends.
[EXPLORE](#) | March 27-29, 2020 A gathering for 1st-6th grade youth to discover camp.

Sincerely,

Sang Kim

Director for Youth and Family Faith Formation

Grand Canyon "WONDER" Trip

Day 2 consisted of lots of sleeping as we made our way out of Texas and journeyed our way into Arizona. It ended with worship at the entrance of Kartchner Caverns! Praise be to God!

Day 1 of our God's Wonder Road Trip ended with Bible study in the Llano River!

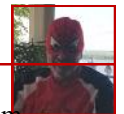


Day 3 and 4 did not disappoint. We explored the rim of Grand Canyon on Day 3 for a couple hours and spotted some beautiful wildlife. On Day 4, we hiked down 1.5 miles to Cedar Ridge point. We soaked up the beauty and fellowship in one of the few trees that provided some shade. It wasn't very hot, and the clouds provided good coverage also. The hike up was harder, and my knee was not up to it, but I made it with the help of a make shift wrap, a walking stick the kids found me, and the Lord himself. We ended the day with an amazing sunset view of Grand Canyon. Afterward, we listened to one of my favorite songs, "So Will I" by Hillsong United, as we sat together and felt the Holy Spirit all around us. Words can't fully express what this experience meant to us, but we know God was at the center of it all.



Day 5

"Former" Youth Group Goes to Lake LBJ



Sunday, July 14
 Mini church service in am.
 Fred as Spiderman. Recreation of lake picture collage. (consisting of 20+ years)
 This was Spiderman day. Rejected hero.
 Devotions, web making and web slinging.
 What a great day. Oh and a beautiful sunset.



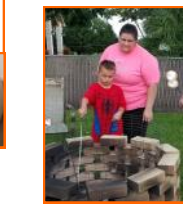
Monday, July 15
 Started the day by going to Longhorn caverns and then Devotions were on Calming the monster. Hulk and Sampson. Hulk smash game.



Tuesday, July 16
 Sunrise on Lake LBJ
 Devotion tonight is about Hot heads and pride. The super hero, Human torch and bible character Elijah. We roasted marshmallows, a Faith5 checkin game about feelings and lessons on how to handle fire. (Put out with water, smother it or let it burn itself out or blow it out).
 Fun evening!



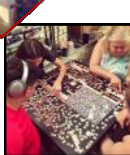
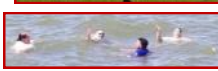
Wednesday, July 17 -
 Vanishing River tour on Lake Buchanan. Devotions for Wednesday. Dead Pool, Super but no Hero. Saul from the Bible performed great deeds under the protection of the Lord. He ended up in a bad place after being cast away from God. Like Dead Pool, he describes himself like many of us in the world. Just doing the best we can even though we curse and do things un-God like. Especially in the heat of the moment. We make pom pom shooters and had a "blast" shooting them.



Thursday, July 18 - After a trip to Fredericksburg and the Homerstad Ranch, the "Avengers" assembled for devotions. The unity of the Avengers come together to meld into a powerful force. Together we can accomplish anything. Puppets, masks and an Avenger quote game. Geez this group is fun!



Friday, July 19 - Our group tonight is 14 strong. Wonder Woman and Deborah from the Bible are Amazons of God. We made WW tiara's and arm cuffs and played a "lasso of truth" game. The day was filled with swimming in a very choppy lake and puzzle and game playing.



Last night Devotions: What about you? Are you a true believer? "The angel of the Lord encamps around those who fear him, and he delivers them." Being heroic in time of trouble, people & superheroes make decisions to make the world better. We created our own super heroes, decorated capes, painted rocks & goofed off in our capes.



New Life Seniors' Opportunities

(open to all persons age 55 and up)

New Life Seniors Luncheon



Wednesday,
August 4th
12:00 pm
Tropical Theme

SENIORS

Movie Following Lunch

Please bring your favorite entrée, side dish or dessert.

For questions, please contact Helen Beckman at 281-485-3159.



Other Senior (and younger adult) Opportunities:

- Men in Mission
- Women of the ELCA, Women of Worth
- Quilters
- Altar Guild
- Prayer Shawl Ministries
- Bereavement Team
- Meals on Wheels
- Christian Helping Hands
- GLOW (God's Love, Our Work) Care Team
- Property Team
- Sunday's Cool Teaching
- Bazaar Team
- Gardening

LUTHERAN MEN IN MISSION



Tuesday, August 20th
@ 6:00 pm

Guest Speaker Night

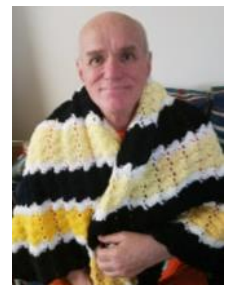
For information contact any participating member of Lutheran Men in Mission RSVP to Charlie Gaevert at c_gaevert@yahoo.com or the church office at 281.485.1818.

Yamilet from UpBring picked up donated school supplies on Thursday, August 1st.

These supplies are part of their drive for the Foster Kids that they serve. Thank you to everyone who donated!



As of July 2019, 691 prayer shawls and 32 baby afghans have been made and distributed to those in need. This ministry only has a few members and really needs more people who would like to help make shawls and afghans. Please contact Karen in the church office @ 281-485-1818 or Carole Wright @ 713-826-8749 if you are interested.





WOMEN OF THE ELCA is the women's organization of the Evangelical Lutheran Church in America. As a partner in the total ministry of the church, the organization affirms, supports and challenges women in their daily ministries at home and around the world. **All women** of the congregation are included and **ALL** are invited to any of the opportunities listed below for fellowship and friendship. For more information, call Julia Sweet at 281.481.2508 or Cheryl Robinson at 713.471.4128.

THE MARY-MARTHA BIBLE STUDY continues third Wednesday bible study from the national WELCA magazine named Gather, thanks to Helen Beckman who leads us at 9:30am in the Fellowship Hall. Questions? Call Julia Sweet at 281.481.2508.

The Lydia Circle Bible Study:
No meeting at this time

WELCA LUNCH BUNCH (all the women of the church) Lunch with New Life women and friends! Arrive about 11:30 am at Busy Bee 518 @ Broadway on Wednesday, August 14th. Questions? Call Julia Sweet at 281.481.2508.

**WELCA
lunch @
Baytown
Seafood**



WOW (Women of Worth) usually meets on the 3rd Friday of the month at 7pm

WOW is moved to the 4th Friday due to the WELCA Convention. Friday, August 23rd, we will meet at in the Fellowship Hall to start making Bazaar Crafts. Please bring ideas and/or supplies to Karen or Tiffany beforehand.

is a part of the WELCA of New Life, so all women over the age of 16 are invited.
Contact Karen at office@newlifelutheran.com



WELCA/WoW planned 2019



- Aug 16th-18th - WELCA Synodical Convention @ Lutherhill**
- Aug 23rd - Bazaar Crafts**
- Sept 20th - Bazaar Crafts**
- SE Fall Cluster Meeting - Oct 19th @ Peace**
- Oct 18th - relaxing Movie night**
- Nov 15th - Friendsgiving - Tiffany to lead**
- Dec 15th - (Sunday after 2nd service) WELCA Christmas Party**

Save the Date/s:

Quilters keep building quilts (for LWR) and friendships on Tuesday mornings.

All are welcome to come and visit on Tuesday at 9:30am! Come to quilt or just for fellowship. For more information, call Vera White at 713.775.6254.

If you are looking for a unique gift for any occasion, consider giving a New Life Quilt. See Vera to open the quilt room to browse the finished quilts. Purchase one for \$45. Proceeds go to purchase batting and thread for these amazing Lutheran World Relief quilts. 237 were displayed on Palm Sunday, 203 of which were sent to LWR after Easter.





Thank you to all who served as Worship helpers for last month.



Thank you to all who served coffee, juice and food during Fellowship Hour: WELCA, the 3rd Sunday group, the Men in Mission, the New Life Church Council and many mystery individuals.



Our next week for delivery is July 29-Aug2. A huge **THANK YOU** to Walt & Carol Wright, Joann Morrison, Phyllis Deats, Jan & Becky Homerstad, Lynn Cope, Bill & Doris Clements, Roland & Nancy Bryars, Hap & Bobbi Cummings, Bubba & Barbara Flowers for stepping up and helping out this month. There are several volunteers on summer vacation and some of the people listed above have stepped up to help multiple days! Thank you!

Our next dates for delivering meals will be **Sept 23-27, & Nov 18-22, 2019. PLEASE MARK YOUR CALENDARS!**

We are always in need of volunteers. If you find you have a day during one of these weeks and you think you might like to help, please feel free to talk to me about this. I can match you up with an experienced driver. If you have any questions, please contact me (Barbara Flowers) at 713-817-1012. You can also contact the church office at 281-485-1818.

On another note, if you know someone who might benefit from this program, you can call Pearl and Meals on Wheels @ 281-485-5081 for information.



Thank you: Lynn Cope, Mike & Terri Kiser, Linda Stavinoha and Korie Williams for the volunteer time they have contributed in the office this month. It is very much appreciated!

New Life Staff

Thank You! From Church Council & Staff

- To all members and 'friends' for stepping in and supporting "your" church.
 - To ALL who generously came forward and gave to the IRS fund. New Life is grateful for our amazing congregational family/s.
 - To Rudy and the Church Council for being diligent and forward thinking regarding all things New Life.
 - To all teachers and parents who participated in the Sunday's Cool planning meeting on July 21st.
 - To the parents of the youth who attended Lutherhill Summer Camp for getting your kids to camp!
 - To Sang Kim for driving said youth to and from Lutherhill.
 - To Pastor for visiting the youth at Lutherhill .
 - To Vera and Elizabeth White for their work at Lutherhill this summer.
 - To the quilters for their tireless work on the Bazaar quilt and the LWR quilts.
 - To Vera White for finding a pattern and the perfect fabric for the beautiful Bazaar quilt and for piecing the top, getting it ready for hand-quilting.
 - To all those who participated with the Men in Mission at the Astros game.
 - To Aimee & Jenaro Castillo and Sang Kim for driving multiple youth across 3 states to the Grand Canyon on a WONDER trip.
 - To MaryAnn Marcha for TRYING to get a family bowling event together. Maybe we can try again?
 - To Nancy Bryars and Terri Kiser and many more who covered office duties while the staff was out.
 - To all you donated School supplies to be given to UpBring for their foster children. Donations were picked up on Thursday, August 1st.
 - To all who have or will be donating items for LWR School Kits. **Our goal is 200 kits. Seniors pack Sept 4th.**
 - To Johnny Salveson for his always great choice of Sunday Service songs.
 - To Rudy Moreno for continuing to hang family crosses on the new Sanctuary wall.
 - To Mike Kiser, John F Gestl & Charlie Gaevert for organizing and keeping up with the sound maintenance/production.
 - To Walt Wright & Rich Newell who replace lights and filters in all three buildings monthly and continually trim bushes and trees around the Church.
 - To Karl Sweet who cut the remaining tree stumps down and trimmed the rose bush by the deck.
 - To Linda Stavinoha, Korie Williams and Lynn Cope for getting bulletins completed and their extra work cleaning the pew backs and getting them resupplied.
 - To those who make and distribute prayer shawls for comfort and blankets to newborns.
 - To all those on the prayer team and beyond who are praying for this congregation, friends and family.
- New Life appreciates all work done to the Glory of God! Let us know if we missed thanking someone.

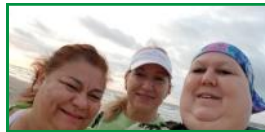


2019



Thursday, August 8th is the Monthly Garden Lecture, sponsored by Brazoria County Master Gardeners and Keep Pearland Beautiful. The lecture is about Community Gardens. The lecture begins at 7 P.M. at the Delores Fenwick Nature Center in the John Hargrove Environmental Complex on Magnolia Parkway.

Monday, August 19th is Open Garden Day at the Harris County Master Gardeners' "Genoa Friendship Garden" on Genoa Red Bluff at 9 A.M. Come and enjoy the multiple gardens, orchards, and flower/herb gardens. There are always plants for sale in the greenhouse as well.



Helen Beckman

Amazing sunrises, hot beaches and the hope to find a sea turtle wandering the beach to lay her eggs. From April 1st to the middle of July, more than 400 volunteers either walk or ride ATV's looking for Sea Turtle tracks or even the turtle itself on the 72 miles of the "Upper Texas Coast". Karen, Terri and MaryAnn trekked 6.5-8 miles every Friday on Galveston Island during the season for our 3rd year. Some days are so windy you walk leaning into the wind, some are so still that it is hard to breathe. One morning we had fog so thick that we were completely soaked within 20 minutes of our 3 hour walk, but then we had a day that was storming and we still walked. Just the idea that there might be a Turtle somewhere ahead keeps us walking. Now that it is August, we are in "hatchling season". Nests that were not discovered are hatching and the baby turtles will be wandering toward the water. If you are at the beach, keep a look out!



During the nesting season, when a nest is found the eggs are collected and taken to a hatching barn in Corpus to help turtle mortality rates. Stats for this year, so far, are as follows: **"Our responding team went out 19 times and we found 13 Kemp's Ridley nests on the Upper Texas Coast. In total for Texas there were 190 Kemps Ridley nests. We had a low year but it was expected due to nesting trends. Our patrols covered**



almost 18,500 miles this season, with 24 shifts a day, 6 days a week." Some teams found "stranded" turtles (alive & dead) because of boating accidents, entanglement with fishing gear or plastic debris or from "cold-stunning". Whenever you are on the beach, be sure to take all trash and "beach" items home. Even the broken stuff. Sea life cant tell the difference between food and plastic. And they get tangled in chairs, sand toys, fishing gear, etc. Pack out what you packed in. Keep it clean!

If you spot a turtle or hatchling, don't touch it! Call 1-866-TURTLES. A trained team will come collect the eggs and/or monitor the turtle for statistics. Thanks!



Note: The Kemp's Ridley Turtle (baby pictured to the left) is the Texas State turtle!



Til next year!



Karen, Terri & MaryAnn

Thrivent Action Team Cards

2019 - Lent and beyond



For early 2019 Events, New Life thanks the following: (Red are sponsors who have initiated the card)

Epiphany Party & UnGreening - Jon Sweet
Pancake Supper & Mardi Gras Party - Gige
St Patrick's Day/Blood Drive - Jon Sweet
Lenten Suppers - Becky Homerstad
Baskets of Promise - Karl Sweet
Seder Meal - Donna Patschke

Good Friday Fish Fry - Doug Barron
Children's Easter Party - Elaine Damewood
Men in Mission Night @ BAKFish - Gige
Mother's Day Flower Fundraiser - Evelyn Baldauf

If you have not signed up to submit an Action Team Card for 2019, please contact the office. Karen and Tiffany are working with the below list and Thrivent to try to help defray costs. Some of these need to be submitted asap.

To learn how you can help make a difference with New Life's campus and outreach ministries, please contact the office.

Upcoming Events that Thrivent Cards could be useful for:

~~Rally Day Party/BBQ~~
Sept 22 - Men's Sunday - Blood Drive
Oct 4-5 - Bazaar (several for different areas)
Oct 26 - Children's Halloween Party
Oct 27 - Reformation Sunday
Nov 10 - Confirmation Sunday
Nov 24 - WELCA ThankOffering Sunday
Nov 30 or Dec 1 - Greening

Dec 20 - Caroling - Blanket Drive
? - Volunteer Appreciation Dinner
Dec 7 - Children's Christmas Party
? - Council/Staff/Leader Dinner
Dec 24 - Christmas Eve/Senior Reception
&
Jan 5 - 2020 Un-Greening

Hurricane Season is from June 1st to November 30th.

Hurricane kit supplies checklist (from CBS and the Red Cross)

- Water: At least a 3-day supply; one gallon per person per day
- Food: At least a 3-day supply of non-perishable, easy-to-prepare food
- Flashlight
- Battery-powered or hand-crank radio (NOAA Weather Radio, if possible)
- Extra batteries
- First aid kit
- Medications (7-day supply) and medical items (hearing aids with extra batteries, glasses, contact lenses, syringes, cane)
- Multi-purpose tool
- Copies of personal documents (insurance policies, birth certificates, lease or deed to home)
- Sanitation and personal hygiene items
- Emergency blanket
- Insect repellent and sunscreens
- Baby supplies (bottles, formula, baby food, diapers)
- Rain gear



For more information go to:

<https://gulfcoastsynod.org> gulf-coast-resources 72-hour-lutheran - checklist posted last month
 Also: <https://abc13.com> weather/hurricane-preparedness 101-what-you-need-in-your-kit

Updates for the Church Roster:

Change of Address and/or email:

Hope & Jeffrey Messenger Address Update:

2816 C St. La Porte, TX 77571

Jamie & Sharon Hilliard Address Update:

1605 Dixie Hollow St. Pearland TX 77581

The Church Staff Thanks everyone for helping us keep the database up-to-date with addresses, phone numbers and emails. for each of your family members. Also: Birthdays, Baptisms, Confirmations, and Wedding dates with the year.

HOW DO PEOPLE START ATTENDING CHURCH?

A Friend Invited Me - 86%

Organized Visitation - 6%

Invited by the Pastor - 6%

Advertising - 2%

churchgrowth.org



Barbara is looking for someone who would be willing to work with her as a "Co-Coordinator (to fill in when she is out of town visiting Grandkids or traveling). Lynn Cope has stepped up and offered to help out as needed, but it would still be great if someone would like to come aboard and experience this rewarding work (3 is always better than 2).

Please prayerfully consider this position/opportunity. You may give Barbara a call at **713-817-1012**.



**Take a picture.
Keep it in your phone
for your trips to Kroger.**

Kroger Community Awards

**New Life Lutheran's Number
changed to TX769**

**New Life hasnt received a check since 10/23/2018.
Please update your Community Award number.**

**Thank you to all who have used the New Life
Number!**

**The old number is still associated with us but cannot be
used when enrolling or accessing our account anymore.**

GLOW is caring for New Life Members.

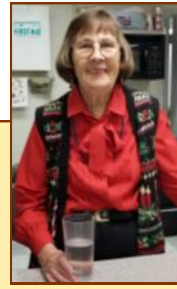
GLOW – God's Love, Our Work.

If you would like to join the GLOW care team or are in need of a care ministry, please contact the church office at 281-485-1818 or GLOW@newlifelutheran.com or write your need on your yellow "Count-Me-In" card from your bulletin.

The GLOW team meets on the second Thursday of the month at 7:00pm in the Fellowship Hall. GLOW welcomes new care ministers! The team sends cards, makes phone calls, provides communion, and sets up meal schedules for those in need.



Thank you to all who served coffee and juice (and more) and/or cleaned up during Fellowship Hour!



Coffee Hour at New Life Lutheran is a wonderful opportunity for visitors and members of our church to meet one another in an informal setting between Sunday services.

If you enjoy having breakfast and fellowship, please consider pairing up with other members to host a week to serve in this important ministry. On past Sundays where there was no sponsor, therefore no food, several people were surprised and complained. As the church cannot fund breakfast, if no one brings food, there is none to serve. If you and/or your family expect something more than coffee—bring something.

Note that MOST 1st and 2nd Sundays of the month NEED Sponsors.



Contact Tiffany Brown-Pineda at CommunityLife@newlifelutheran.com or the church office (281-485-1818) or to sign up!




Christian Helping Hands is in need of many things all year around

Please consider donating the following items EVERY month:

Soup (Ready to eat – like Chunky Soup)

Cooking Oil/spray

Tomato products (diced, sauce, paste,  spaghetti sauce, etc.)

Cream soups 

Packets of tuna (not just cans)

Macaroni & Cheese (boxes & cups - Kraft is preferred by most visitors)

Single serve meals (canned and packets)

(Tuna salad & crackers, spaghetti-o's, ravioli, dinners, etc)

Canned beans (ranch style, kidney, pinto, refried, etc.)



Property
Maintenance



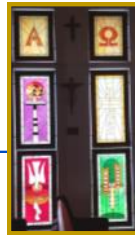
Lots of things going on behind the scenes...

Thank you to the New Life Property team for all their efforts to keep up with ongoing maintenance including:

Walt Wright, Rudy Moreno, Ronnie Stavinoha, Rich Newell, Charlie Gaevert, Foster Foucheaux, Richard Lowery, Will Sinacori, Karen Sweet Cheney, Cheryl Robinson and many more are working the property to keep it safe and running smoothly. If you see one of these guys, please shake their hand and let them know they are appreciated! See the thank you page for individual job thanks.



Property updates, cleaning, and replacements are being done continuously. If you see something that needs to be addressed or you have a talent you are willing to share, and time to share it, please let Charlie Gaevert, Rudy Moreno or Karen Sweet-Cheney know. (Even if you only have 15 minutes on a Sunday to help with something you would like to share!) Suggestions are welcome as well.



Thank you to all those who provide special offerings to help with Lawn Care. If you are not giving and would like to be added to the reminder list, please contact the office. Lawn Care is \$380 per month for the front of the property. The ball teams who use the back field are under contract to keep the field mowed.



Saturday, Aug. 10th New Life will be preparing for Rally Day with a Campus Clean-Up day. Meet in the Fellowship Hall at 9am.

Activities include cleaning out, restocking, wiping down and polishing the pews, some flowerbed maintenance, helping teachers prepare their classrooms for the Fall and cleaning out clutter to make room for more classes.

New Life Needs:

We are always in need of air filters to make all the units run optimally. They are changed every other month.

Please consider donating:

Air Filters: 20x18x1 (1) & 20x20x1 (10 every other month)

Light Bulbs: T-12 and T-8 Fluorescent Tubes (we are moving to LED)

Other consistent needs: Bottled water is used year round (all sizes), Coffee (regular and decaf), little creamers (mini moos, Hazelnut & French vanilla), Z fold paper towels & 2 ply toilet paper (Charmin ultra plus). We purchase some of these items when there are events using Thrivent cards, but if you are at Sam's and can pick an item up it would be appreciated! (let the office know)





SUNDAY'S COOL



*There are Sunday's Cool classes for everyone
(youth & adults).*

*Sunday's Cool has classes for everyone (youth & adults).
Take time for Life-Long Learning!*

Sunday's Cool Teachers 2018-2019



Sunday's Cool Rally Day & Backpack Blessing

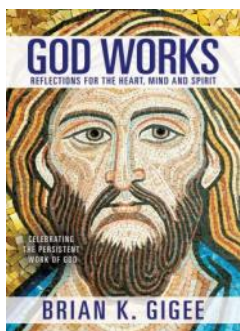


August 11th @ 9:15am

New Life will also be recognizing last year's teachers on August 11th. Please join us as we thank them for all their hard work.

- ALL youth from three year olds through high school will be meeting in Sang's office in the admin building August 4th. Regular SS starts Aug 11th at Rally Day with 3 year old through 3rd upstairs in the Fellowship Hall, 4th-6th downstairs, and 7th-12th in Sang's office in the Administration Building.
- Ø The ABC class... Adult Bible Class is studying the gospel of John in the New Testament.
- Ø The DVD class... Daring Video Disciples will soon be completing a series on "Comparative Religion" by Professor Charles Kimball. The class will then begin to watch and discuss a series entitled "How Jesus Became God" by Professor Bart D. Ehrman.
- Ø Pastor Giguee will lead a "Jesus ON Jesus" discussion based on Sunday's Gospel reading – the class meets each Sunday in the Fellowship Hall thru August 11th.

Come Join in the Fun While Learning about God's Love



GOD WORKS

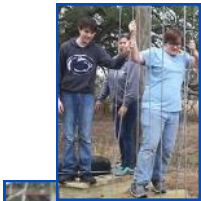
By Pastor Brian Giguee
*reflections for the heart, mind
and spirit*

\$15.00 (softcover)

Also available on Nook and Kindle

Go online to get a copy for some reflective reading as you embolden your faith this Summer!

<http://www.barnesandnoble.com/w/god-works-brian-k-giguee/1117780985?ean=2940149008445>



See Lutherhill Retreat Schedule on Page 4



Senior High Retreat 2018

For more information on retreats, see Sang's Youth Director page 10 or visit



Summer Camp 2018



Confirmation Camp 2017



Lutherhill.org

Elementary Retreat 2019



Senior High Retreat 2019



Sonny Boy & Sabastian @ LutherHill Summer 2019



Sonny Boy getting ready for "The Pond!"



Ga-Ga Ball!





ELCA SPIRITUAL CENTER DAILY BIBLE READINGS

As we continue to share in the emerging 21st century ministry, please take time as you are able to visit the Spiritual Center at the ELCA website: www.elca.org/spiritual.html

"To be Christian without prayer is no more possible than to be alive without breathing." - Martin Luther

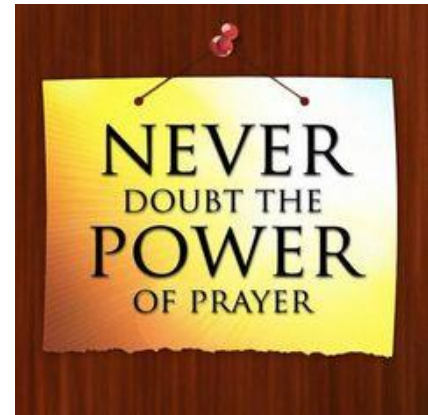
GOD'S PEOPLE PRAY!

Pray for renewing health: Chris Baldauf, Annie Bates, Brian Bates, Kate Bates, Susan Bickham, Bryan Bradford, Ed Bradford, Lucas Bradford, Robyn Bradford, Leta Branum, Barbara Brown, Terry & Floyd Brown, Rannie Daugherty, Carl Ericsson, the Gestls & Goschs, Margo Gige, Kelli Grage, Harvey Hamilton, Walter Hayes, Homerstad families, Linda Hudgens, the Kisers, Larry Magers, Tina Meyer, Jerry Migl, Tamsey Mims, Pete Mistrot, Cheryl Newell, Hubert Pardue, Allen Patschke, Allison Patschke, Viola Patschke, Tyler Peterson, Janet, Frannie & Mike Porter, Scott & Leeta Sanger, Glenn Sponholtz, Julia Sweet, Karen Sweet-Cheney, Patrick Sweet, Claudia Thomas, Ben Viccellio and Vera White.

Special prayer needs: Angelo family, Barnes & Daeschner families, Barrett and Ruddock families, Barron, Larson, Reed & Moore families, Bradford family, Broughton & Boeker families, Buckels family, Burt family, Childs family, Zachary Cope, Fraker family, Gosch family, Kaiser family, Kyle Lawson, Lawson family, Magers family, Marcha & Castillo families, Marcha & Salazar families, Mistrot & Meyer families, Patschke, DeWeese, Schneider & Yancey families, Porter family, Purdum & Hayes families, Reynolds & Galloway families, Eric Schmidt family, Schroder family, Tatuaca family, Thomas family, Vavrecka family, Welch family, Wellman family, Wilson family and the Wood family.

New Life prays for those serving in the military: Keagan Barthelme, Jeremy Foster, Zach Gottlieb, Eric Metzger, Mason Moore (reserves), Ryan Newell, Michael Porter Jr., Berkeley Scott, Joe Wishart & Christopher Young.

PRAYER CORNER



You may wish to cut out this section and place it where you will see it and remember to pray.



dear LORD,

Let me be just what they need.

If they need someone to trust, let me be trustworthy. If they need sympathy, let me sympathize. If they need love, (and they do need love), let me love, in full measure.

Let me not anger easily, Lord, but let me be just. Permit my justice to be tempered in your mercy.

When I stand before them, Lord, let me look strong and good and honest and loving. And let me be as strong and good and honest and loving as I look to them.

Help me to counsel the anxious, crack the covering of the shy, temper the rambunctious with a gentle attitude.

Permit me to teach only the truth. Help me to inspire them so that learning will not cease at the classroom door.

Let the lessons they learn make their lives fruitful and happy. And, Lord, let me bring them to You. Teach them through me to love You.

Finally, permit me to learn the lessons they teach.

amen



These petitions are offered as guides to prayer for the global, social and outreach ministries of the church. Thank you for your continued prayers for the life and mission of this church.



- 1** Give thanks for the 12 young-adult summer interns serving in the ELCA churchwide office, who are helping our church carry out its mission through sharing generously of their gifts, skills and faith.
- 2** June 30 marked the successful completion of *Always Being Made New: The Campaign for the ELCA*. Give thanks to God for the generosity of ELCA members and congregations, which makes a difference in the lives of people around the world; pray that we continue to grow and support ministries that serve our neighbor, share the gospel, equip leaders and grow the church.
- 3** Lift up in prayer farmers, ranchers and agricultural workers who have been adversely impacted by this year's heavy rains, persistent flooding and, in some regions, heat and drought. Pray that they will find the support and assistance they need, be able to maintain their livelihoods, and be encouraged by our gratitude and awareness of how their work helps sustain and feed the world.
- 4** Ask God to grant us the wisdom and humility to understand that our true identity and value lie not in earthly possessions, property, financial assets or positions of power and influence but in a life and faith centered in God's love, word and ways.
- 5** *ELCA Churchwide Assembly* Pray for voting members, leaders, pastors and guests gathered in Milwaukee for the 2019 Churchwide Assembly: "We are church." Pray that the Spirit will guide and energize their spiritual discernment, discussions and decisions, on behalf of the entire church, about how we can do God's work in the world — together.
- 6** Ask the Holy Spirit to dwell in us and to inspire us as people of faith, transformed by the love of God we experience in Jesus Christ; ask that we might rid ourselves of greed, impurity, anger, hatred, lies and abusive language and instead reflect the image of our creator.
- 7** Pray for all those engaged in the ELCA Churchwide Assembly as they work together, with the Holy Spirit in their midst, to make decisions that will help guide the work and mission of our church now and in the future.
- 8** Pray that God will energize and sustain our ecumenical and interreligious work, advocacy and prayers to prevent gun violence, and to respond to people and communities affected by this violence with support, care and concern for as long as they are needed.
- 9** Pray that, without boasting or fear, we will speak God's wisdom and truth to all people in every place and circumstance.
- 10** Pray for congregational leaders and volunteers as they prepare for fall Christian education programs serving all ages; give thanks for their commitment, faith, creativity and service.
- 11** Pray that, with a spirit of generosity and compassion, we will share all we have received from God with our neighbor, especially those in critical need who long for hope, loving care and relief from suffering.
- 12** Ask God to bless and extend the impact of ELCA members and congregations as they use the ELCA Good Gifts Catalog to donate generously to specific needs, programs and priorities in communities around the world.
- 13** Give thanks for the work and ministry of nurses who give of themselves without partiality or hesitation as they tend to the well-being, health and healing of people in congregations, clinics, hospitals, schools, the military and community agencies.
- 14** Remember in prayer the work and witness of our ELCA missionaries and the seven young people serving in the ELCA Young Adults in Global Mission program in Israel, Jerusalem/West Bank, Jordan and Palestine.
- 15** Give thanks and praise for God's attentiveness, help and steadfast love for all humankind.
- 16** Our church is always prayerfully seeking guidance for the mission, work and witness of the ELCA in this rapidly changing world. Pray that the Holy Spirit will equip and energize us to meet the shifting challenges we face in sharing the gospel and in doing God's work of bringing hope, reconciliation and healing to the world.

17 Pray for the ELCA Young Adults in Global Mission program as it prepares young adults, ages 21-29, for a yearlong journey of service and witness alongside our global companions and churches in nine countries around the world.

18 Pray that our baptism, the work of the Holy Spirit and the teachings and example of our brothers and sisters in Christ might equip us for the challenges and difficulties we encounter as we follow Jesus, share the gospel, serve our neighbor and strive to live each day according to God's ways and desires for humankind.

19 Give thanks to God for our church and for our ecumenical and interreligious partners as they work for the humane treatment of all who present themselves at our borders seeking asylum. Give thanks for our agencies and faith communities that have welcomed, engaged and served migrant families. And pray for those migrants, who have arrived in the United States seeking safety, justice, reconnection with families and relatives, and the opportunity to build new lives without fear.

20 Ask God to dispel the fear, anxiety and hopelessness that children and youth internalize as a result of gun violence and threats in our communities, schools and public gathering places. Pray that we might become bearers of hope and concern for them, and fearless agents of change and peace in our nation and the world.

21 Pray that students, parents and teachers will be renewed for the coming academic year and that students in need of school supplies or tuition assistance will be provided with what they need to ease their concerns and further their educations.

22 Pray that our hearts will be filled with the biblical stories of people of faith, that we will recognize and give thanks for the "cloud of witnesses" surrounding us today, and that we will look to Jesus' teachings and example to guide and encourage our faith.

23 Pray that the new ELCA resource "A 60-Day Journey Toward Justice in a Culture of Gun Violence" will invite readers to face the painful truth of gun violence and to work for its prevention as people of God who strive for justice and peace.

24 Pray for coaches and student athletes of all abilities as they train for upcoming sports seasons. Pray that they will be safe from injury, experience joy and confidence in their physical activities, and have positive, caring people in their lives to help them cope with the challenges they might face — personal, family, spiritual, social, academic and athletic.

25 Ask God to grant us the wisdom, boldness and compassion to care for our neighbors in need, even when doing so is inconvenient, interrupts our routines or forces us to reconsider traditions, laws, rules and practices of society and the church.

26 Many of our ELCA outdoor ministry staff are ending their summer of service and transitioning back to school, new employment or other service opportunities in the church. As they work to discern their vocations and futures, ask the Holy Spirit to guide, inspire and equip them to share their faith and gifts with the church and society and to respond to God's call to service and ministry.

27 Pray that we will respect and affirm how God calls and equips children and youth to share the gospel, serve as leaders and examples in the church, and do God's work in the world together with people of all ages and abilities.

28 Remember in prayer our ELCA missionaries serving in China, Hong Kong, Malaysia, Thailand, Nepal, Singapore and South Korea. Give thanks for their service and witness as they accompany our global companions in ministries of theological education, teaching, counseling, communications and parish ministry.

29 Pray for seasonal summer employees and staff across our nation who worry about finding new employment and housing in the months to come, and pray that our congregations will be communities of faith where people in transition are welcomed and supported.

30 Remember in prayer students who are beginning or continuing their seminary education in response to God's call to leadership and service. Pray that God will equip them to share their faith and wisdom, serve their neighbor, manage and guide the work of congregations for the sake of mission, and inspire others to bold witness in an ever-changing world.

31 Give thanks and praise to God, who is "merciful and gracious, slow to anger and abounding in steadfast love."



August Birthdays



| | |
|-----------------------------|-------|
| Nancy Brown | 08/01 |
| Wendy Conners | 08/01 |
| Ryan Jones | 08/01 |
| Aaron Plata | 08/02 |
| Rachel (Bunny) Meyer | 08/03 |
| Morgan Barrett | 08/04 |
| Elaine Damewood | 08/04 |
| Daoud Karam | 08/04 |
| Alan Barnes | 08/05 |
| Kim Koepke/Johnson | 08/06 |
| Meredith (Reynolds) Roberts | 08/06 |
| Patti Barrett | 08/07 |
| Morgan Johnson | 08/07 |
| Catherine Sinacori | 08/07 |
| Noah Landrum | 08/08 |
| Maria Sanchez | 08/09 |
| Marjorie Schooley | 08/10 |
| Garrett Thweatt | 08/12 |
| Erik Sweet | 08/13 |
| Jose Villalobos III | 08/13 |
| Michael Lowery | 08/14 |
| Andrew Turner | 08/18 |
| Louis Marcha | 08/19 |
| Carolyn Wallace | 08/19 |
| Preston Brown | 08/20 |
| Jason Gerstner | 08/21 |
| Robert Johnston | 08/21 |
| LuAnne White | 08/21 |
| Holly Tatuaca | 08/21 |
| Mike Besser | 08/22 |
| Benjamin Reed | 08/22 |
| Ellie Reed | 08/22 |
| Valerie Rincones | 08/22 |
| Jessica Deyo | 08/24 |
| Vince Gottlieb | 08/24 |
| Kristi Morrison | 08/24 |
| Lena Roszak | 08/24 |
| Matt Scott | 08/24 |
| Tally Perez | 08/25 |
| Gary Anderson | 08/28 |
| Javier Caballero | 08/29 |
| Rama Gerig | 08/30 |
| Leeta Sanger | 08/30 |

Wedding Anniversaries

| | |
|----------------------------|-------|
| Lynn & Doug Barron | 08/01 |
| Beth & Mason Moore | 08/01 |
| Vanessa & J.C. Rincones | 08/08 |
| Linda & Richard Broughton | 08/25 |
| Madelyn & Ike Schroder | 08/25 |
| Stephenie & Erick Martinez | 08/26 |
| Loretta & Mark Kaiser | 08/28 |

Baptismal Anniversaries

| | |
|----------------------------|-------|
| Alan Barnes | 08/01 |
| Patrick Burkard | 08/01 |
| Rick Cummings | 08/01 |
| Margo Gige | 08/01 |
| Pamela Guidry | 08/01 |
| Dianna Moreno | 08/01 |
| Julie Watkins | 08/01 |
| Rudy Moreno | 08/06 |
| Nancy Ramirez | 08/07 |
| Madison Johnson | 08/08 |
| Hayden Schmidt | 08/08 |
| William Sinacori | 08/10 |
| Zachary Gottlieb | 08/11 |
| Autumn Johnson | 08/11 |
| Jaxson Zaunbrecher | 08/12 |
| J.D. McDonald | 08/13 |
| Elna Ritter | 08/14 |
| Jose Villalobos III | 08/14 |
| Hunter Van Ness | 08/15 |
| Austin Tatuaca | 08/16 |
| Patrick Thompson | 08/16 |
| Addison Welch | 08/16 |
| Torry Atkins | 08/18 |
| Garrett Thweatt | 08/18 |
| Kaitlin Casso-Young | 08/20 |
| Christopher Young | 08/20 |
| David Young | 08/20 |
| Timothy Young | 08/20 |
| JoAnn Morrison | 08/21 |
| Joey Morrison | 08/21 |
| Kristi Morrison | 08/21 |
| Jordan Barthelme | 08/26 |
| Kathryn Peterson Viccellio | 08/26 |
| Grayson Kaiser | 08/28 |
| Christy Villalobos | 08/28 |
| Jolissa Villalobos | 08/28 |

If your name or date needs updating, please contact the New Life office to have your name included in next year's posting.

PASTORAL STAFF

LEAD PASTOR

Rev. Dr. Brian K. Gige, D. Min.
Office Hours: Mon. 1:00-4:00 pm, Tues. 1:30-5:00 pm, Wed. 1:30-5:00 pm *and by appt.*
 Office 281.485.1818 [24-Hour Voice Mail]
 Email: brian@newlifelutheran.com

YOUTH AND FAMILY MINISTRY

Sang Kim – 281.485.1818 or 281.818.6833
 Email: sang@newlifelutheran.com

MUSIC DIRECTOR

Johnny Salvesen - 281.485.1818
 254.733.7668 cell
 Email: johnnysalvesenbass@gmail.com

**ADMINISTRATIVE ASSISTANT
 OFFICE MANAGER**

Karen Sweet Cheney 972.841.2600
 Email: office@newlifelutheran.com

**DIRECTOR FOR COMMUNITY LIFE &
 MINISTRY**

Tiffany Brown-Pineda 832-330-1478
 Email: CommunityLife@newlifelutheran.com

Office 281.485.1818 Fax 281.485.2535

OFFICE HOURS:

Mon.-Thurs. 9:00 am – 5:00 pm
Fri. Closed

WORSHIP: Sundays 8:00 am & 10:30 am
Sunday's Cool 9:15am

Website newlifelutheran.com

CHURCH COUNCIL MEMBERS

COUNCIL EXECUTIVE TEAM

| | Home | Cell |
|-------------------------------|-----------------|--------------|
| Council President | Rudy Moreno | 281-734-5019 |
| Council Vice-President | Barbara Scott | 832-857-3830 |
| Council Secretary | Elna Ritter | 832-865-5176 |
| Church Treasurer | Glenn Sponholtz | 832-328-5785 |

COUNCIL AT LARGE

| | | |
|----------------------------|-----------------|--------------|
| 2019 Council Member | Elaine Damewood | 713-542-4340 |
| | Carol Jackman | 201.406.4312 |
| | Cindy Welch | 253-683-0004 |
| | Susie Wellman | 281.844.1294 |

SUPPORT STAFF

| | | |
|---------------------------------------|-------------------------|--------------|
| Altar Guild Chairperson | Cheryl Robinson | 713.471.4128 |
| Bazaar/Fall Festival Team Chairperson | Karen Sweet Cheney | 972-841-2600 |
| Bereavement Team Leader | Helen Beckman | 281.485.3159 |
| Christian Helping Hands | Judy & Foster Foucheaux | 281.997.0022 |
| Custodian | Sang Kim | 281.818.6833 |
| GLOW Coordinator | Karen Sweet Cheney | 281-485-1818 |
| Lawhon Volunteer Coordinator | Carole & Walt Wright | 713.826.8749 |
| Meals on Wheels Coordinator | Barbara Flowers | 713.817.1012 |
| Men's Ministry Team Leader | Gary Siegworth | 713-306-7187 |
| Prayer Chain | Tiffany Pineda | 832-330-1478 |
| Prayer Shawl Ministry | Carole Wright | 281.489.1101 |
| Property Team Coordinator | Charlie Gaever | 281.224.4065 |
| Seniors Ministry | Helen Beckman | 281.485.3159 |
| Sunday School Superintendent | Aimee Castillo | 281.919.7158 |
| Thrivent Congregation Advocate | Kate Bates | |
| | Karen Sweet Cheney | 972-841-2600 |
| Tuesday Morning Quilters | Vera White | 713.775.6254 |
| Women of the ELCA Co-Chair | Karen Sweet Cheney | 972-841-2600 |
| Co-Chair | Tiffany Pineda | 832.330.1478 |
| WELCA – Mary Martha Circle | Helen Beckman | 281-485-3159 |
| WOW [Women of Worth] | Karen Sweet Cheney | 972.841.2600 |

Helping Hands in Worship - August 2019

Altar Guild: Deanna Barthelme & Susie Wellman Communion Wine/Wafers are provided by Lynn Cope

* Worship Assistants needed. Please contact the church office if you would like to serve.

| | | August 4 Pentecost 8 | August 11 Rally Day | August 18 Pentecost 10 | August 25 Pentecost 11 | September 1 Pentecost 12 |
|--|-----------------------|---|---|---|---|---|
| Acolyte | 8:00 10:30 | Clayton Migl Cate Cummings | Harleigh Gosch Avery Welch | Clayton Migl Casey Crawford | Bryce Flick Sophia Castillo | Harleigh Gosch Jocelyn Weber |
| Assisting Minister | 8:00 10:30 | Matt Scott Jamie Hilliard | John Russell Gestl Aimee Castillo | Denise Jurgens Peter Weber | Matt Scott Cindy Welch | Nancy Bryars Michael Porter |
| Communion Assistant 8:00am | | Robin Gottleib Vincent Gottleib | Susie Wellman Tiffany Pineda | Coleen Gestl John Gestl | Jerry Migl Brenda Migl | Denise Jurgens Frank Jurgens |
| Communion Assistant | 10:30 | Mary Ann Marcha Ed Bradford | Christal Thompson Cheryl Robinson | Barbara Flowers Michael Porter | Carole Wright Deanna Barthelme | OPEN |
| Altar Flowers | | Tina & Gordon Meyer In Honor of Their Daughter Rachel's Birthday | Helen Beckman | Available Flowers can be Purchased for \$45. | Nancy Fuller | Available Flowers can be Purchased for \$45. |
| Lay Reader | 8:00 10:30 | Elna Ritter Bryan Bradford | Evelyn Baldauf Mina Stagner | Lynn Barron Carole Wright | Elaine Damewood Katie Fraker | John Gestl Peter Weber |
| Nursery | 10:30 | Jackie Crawford | Madeline Schroder | Jackie Crawford | Madeline Schroder | Trent Perez |
| Greeters | 8:00 | Nancy Bryars | Judy Foucheaux Foster Foucheaux | Karen Sweet Cheney Tiffany Pineda | Coleen Gestl John Gestl | Robin Gottleib Vincent Gottleib |
| Greeters | 10:30 | Linda Stavinoha Becky Homerstad | Dennis Morrison JoAnn Morrison | Andy Crawford | Donna Patschke Nolan Patschke | Sandra Foster Charles Foster |
| Ushers | 8:00 | Charles Gaevert Susie Wellman | Robin Gottleib Vincent Gottleib | Frank Jurgens Matt Scott | Susie Wellman Doug Barron | Matt Scott Charles Gaevert |
| Ushers | 10:30 | Floyd Brown Tiffany Pineda & Logan | Tony White Gary Siegworth | Nolan Patschke Milton Thomas | Jenaro Castillo Jan Homerstad | Ed Bradford Christal Thompson |
| Coffee Hour | | OPEN | Sunday School Teachers & Parents | 3 rd Sunday Group | MIM | OPEN |
| Opening Closing & Count | | Elna Ritter Carol Jackman Glenn Sponholtz | Elna Ritter Carol Jackman Glenn Sponholtz | Elna Ritter Carol Jackman Glenn Sponholtz | Elna Ritter Carol Jackman Glenn Sponholtz | Susie Wellman Barbara Scott Glenn Sponholtz |
| Sound System | 8:00 10:00 | Charlie G./John G. Mike Kiser | Charlie G./John G. Mike Kiser | Charlie G./John G. Mike Kiser | Charlie G./John G. Mike Kiser | Charlie G./John G. Mike Kiser |

Calendar is on our website: www.newlifelutheran.com under Calendar tab.

AUGUST

2019

| Sun | Mon | Tue | Wed | Thu | Fri | Sat |
|-------------------------|-------------------------|-------------------------|------------------------|------------------------|-------------------------------|------------------------|
| 28 | 29 | 30 | 31 | 1 | 2 | 3 |
| Youth Grand Canyon Trip | | | | | | |
| 8a Traditional Worship | 6p HouseBand Practice | 9:30a Quilting | 6p Worship Team Meeti | 7p Property Team | | 10:30a Phoenix Group |
| 9:15a Sunday's Cool an | 6p Modified Yoga | 7p Word Fellowship Cer | | | | 7p Word Fellowship Cer |
| 10:30a EPIC Worship | 8p AA Meeting (Co-Ed) | | | | | |
| 12p LYO - Lutheran You | 8p Ala-non | | | | | |
| 12p Word Fellowship Ce | | | | | | |
| 4 | 5 | 6 | 7 | 8 | 9 | 10 |
| 8a Traditional Worship | 6p HouseBand Practice | 9:30a Quilting | 12p Senior (55+) Lunch | 5:30p Bazaar Team | | 9a Church Work Day |
| 9:15a Sunday's Cool an | 6p Modified Yoga | 7p Word Fellowship Cer | | 7p GLOW (God's Love, C | | 10:30a Phoenix Group |
| 10:30a EPIC Worship | 8p AA Meeting (Co-Ed) | | | | | 7p Word Fellowship Cer |
| 12p LYO - Lutheran You | 8p Ala-non | | | | | |
| 12p Word Fellowship Ce | | | | | | |
| 11 | 12 | 13 | 14 | 15 | 16 | 17 |
| Rally Day/BackPack Ble | 6p HouseBand Practice | 9:30a Coastal Bay Confe | Friendswood ISD Starts | Alvin ISD Starts | 6p WELCA Retreat @ Lutherhill | |
| 8a Traditional Worship | 6p Modified Yoga | 9:30a Quilting | Lutheran South Acader | Pearland ISD Starts | | 10:30a Phoenix Group |
| 9:15a Sunday's Cool an | 6:30p Church Council | 7p Word Fellowship Cer | 11:30a WELCA Lunched | | | 7p Word Fellowship Cer |
| 10:30a EPIC Worship | 8p AA Meeting (Co-Ed) | | | | | |
| 12p LYO - Lutheran You | 8p Ala-non | | | | | |
| 12p Word Fellowship Ce | | | | | | |
| 18 | 19 | 20 | 21 | 22 | 23 | 24 |
| WELCA Retreat @ Luthe | Angleton ISD Starts | 9:30a Quilting | 9:30a Mary Martha Bibl | | 7p WOW - Women of W | 10:30a Phoenix Group |
| 8a Traditional Worship | Clear Creek ISD Starts | 6p Men in Mission - Spe | | | | 7p Word Fellowship Cer |
| 9:15a Sunday's Cool an | Eagle Heights Christian | 7p Word Fellowship Cer | | | | |
| 10:30a EPIC Worship | Pasadena ISD Starts | | | | | |
| 12p LYO - Lutheran You | 6p HouseBand Practice | | | | | |
| 12p Word Fellowship Ce | 6p Modified Yoga | | | | | |
| | 8p AA Meeting (Co-Ed) | | | | | |
| | 8p Ala-non | | | | | |
| 25 | 26 | 27 | 28 | 29 | 30 | 31 |
| 8a Traditional Worship | Houston ISD Starts | 9:30a Quilting | | | | 10:30a Phoenix Group |
| 9:15a Sunday's Cool an | 6p HouseBand Practice | 7p Word Fellowship Cer | | | | 7p Word Fellowship Cer |
| 10:30a EPIC Worship | 6p Modified Yoga | | | | | |
| 12p LYO - Lutheran You | 8p AA Meeting (Co-Ed) | | | | | |
| 12p Word Fellowship Ce | 8p Ala-non | | | | | |