

---

# The Lifeline

---

September  
2021



All are Welcome  
**NEW LIFE LUTHERAN CHURCH**  
PEARLAND, TEXAS



LUTHERAN WORLD RELIEF

## Offering Comfort and Care to Those Who Need It Most

More stories @ <https://lwr.org/news>

Often, when natural disasters strike or when war drives families from their homes, our hearts ache with compassion, but we don't know how to help. Making Lutheran World Relief Kits is a simple, fun and tangible way to offer comfort to those suffering and express love to our neighbors in need.

## LWR Quilts & Kits touch the lives of people around the world.

### School kits provide children in Peru the tools they need to succeed.

Betza loves school so much that she carries her pink school bag nearly everywhere she goes. And the 6-year-old is filled with excitement to use her new notebooks and pencils when she starts first grade in March.

11-year-old Kevin proudly shows off his new School Kit. Kevin is one of the best students at his school. He studies hard on school days because his weekends are busy. They are filled with chores and work, helping to run his family's small orchard and collecting the money from the passengers who ride the bus his father drives.

Like many of their neighborhood friends, Betza and Kevin wouldn't have these essential supplies without your generous heart. Each lives in a poor area of Peru, where families often face the choice between food and education for their children. And even when children can attend school, they often go without even the basic supplies.

**Thanks to you — through your time and resources — these young minds have the supplies they need to thrive in the classroom. And while in school, students receive a nutritious lunch, which is important for keeping them strong and healthy when malnutrition is prevalent.**

**New Life Seniors will pack School Kits at the October 6th Senior Lunch. Supplies needed: 200 70-count spirals. Thank you for your donations!**



Betza, left, and Kevin dream of going to school and having the supplies they need in Peru where school kits change young lives.

**Hang On**

**Mark Your Calendars**



**Don't Let Go**

**In-Person 8:00 a.m. & 10:30a.m. Worship Services**  
**in the Sanctuary (social distanced)**  
**with Livestream available**  
**On Facebook @ NewLifeinPearland**  
**-+-**

**Thursday, September 2nd**

Property Committee

**Monday, September 6th - Labor Day**

**Tuesdays, September 7, 14, 21 & 28**

Quilting @ 9:30am

**Thursday, September 9th**

GLOW - Care Committee

**Saturday, September 11th**

Leader Huddle/Retreat

**Sunday, September 12th**

Grandparents Day – Breakfast

Rally Day - Sunday School Starts

**Wednesday, September 15th**

Mary Martha Bible Study @ 9:30am

**Friday, September 17th**

WOW - Women of Worth

**Saturday, September 18th**

Orange St Clean Up

**Monday-Friday, September 20-24**

Meals on Wheels Delivery

**Masks are now  
Optional on  
campus**



**Be WISE  
Sanitize**

**Note:** The Office is open limited hours.  
Please leave a message at 281-485-1818 if you need  
access or something from the office.

## *Table of Contents*

<b>LWR - Kit Stories</b>	<b>Cover</b>
<b>Mark Your Calendar, Table of Contents</b>	<b>2</b>
<b>Pastor 's Pen - from Pastor Bill</b>	<b>3</b>
<b>Church Council President - Mina Stagner</b>	<b>4</b>
<b>Leader Retreat, Rally Day</b>	
<b>Call Committee Update</b>	<b>5</b>
<b>Altar Flowers/Communion Elements</b>	
<b>Thank You's! Senior Lunch</b>	<b>6</b>
<b>Meals on Wheels Schedule</b>	
<b>2021 Back to School Pictures</b>	<b>7</b>
<b>EnviroNews</b>	<b>8</b>
<b>Carol Jackman 6 Years Cancer Free!</b>	<b>9</b>
<b>Meredith Oliver Congratulations</b>	
<b>LWR – Senior packing Health Kits Pictures</b>	
<b>Christian Helping Hands Updates/Needs</b>	<b>10</b>
<b>Property updates (Lawncare &amp; Property Needs)</b>	
<b>Sunday School - Superintendent &amp;</b>	<b>11</b>
<b>Teachers needed for 2021-2022</b>	
<b>Backpack Blessing Picture, Rally Day</b>	
<b>Mary Martha Bible Study</b>	
<b>Youth and Adult Sunday School Updates</b>	
<b>Prayer Page</b>	<b>12</b>
<b>ELCA Prayer of the Day Page website</b>	
<b>Birthdays/Baptism/Wedding Anniversaries</b>	<b>13</b>
<b>Sympathies</b>	
<b>Monthly Calendar</b>	<b>14</b>



## Pastor's Pen:

### “Where Peace is Found”

I recently ran across a classic story that struck me in a new way. It goes like this:

There was once a contest challenge given to the artists of a community. They each were to enter a painting that represented peace. As the community began to look at the paintings, there was one that stood out from the rest that most folks were sure would win. It was a beautiful pastoral scene, a rolling green meadow, punctuated with beautiful colorful flowers, a deep blue sky with puffy white clouds, and a boy walking through the meadow headed for a brook with a fishing pole in his hand. But, as it turns out, that painting came in second. First place went to a painting that portrayed a storm. The sky was dark and angry and waves were crashing into a cliff, and lightning was flashing through the skies. At first people thought, “What does that painting have to do with peace?” Yet, on a closer observation, they saw a cleft in the rock cliff, with a mother bird in a nest, her babies all nestled under her wings, and they were sleeping. The message? Peace is not necessarily in the absence from the storm, but rather it can be in the middle of the storm.

In these extraordinary times of the COVID-19 Pandemic, I have at times found myself searching for peace and security, but not finding them in the places I usually think to look. So often, I’m looking for the proverbial pleasant places where white puffy clouds float in a blue sky. Eventually, God leads me to realize that God has me embraced in loving arms in the midst of what looks like danger all around.

And dangers, real or perceived, do surround us. On top of your personal challenges and struggles, the Delta variant of the Covid-19 virus poses its universal threats. It’s most important that we focus the eyes of our hearts on Jesus and the grace he brings from God and freely gives. Storms may be all around, but Jesus is in the midst, holding us, leading us, and guiding us. We don’t know all of what God has in store for loving changes in the way we “do church”. But we are certain that God’s care surrounds us as we take one step at a time.

See you in worship, online or in person,

*Pastor Bill*



Dear Church Family,

Good news! According to our CPA, all of our past IRS financial obligations have been paid! A BIG thank you to everyone who made this possible with your extra giving over the past couple of years.

Remember Rally Day on Sunday, September 12, at 9:00 a.m.! The kids will get to meet their Sunday School teachers for the upcoming year and have breakfast before Sunday School.

Parents (or grandparents, guardians, etc.) of school age children, please remember to return your postcard about whether your children will be returning to in-person Sunday School. We need that information to plan accordingly.

We will have a congregational meeting coming up in late September or early October. The purpose will be to elect new Church Council members for 2022. Please contact any current council member if you have a recommendation for next year.

We are considering holding a Leaders Meeting on Saturday, September 11, to make plans for the next six months or so. We need your ideas. Even more importantly, can you commit to participate? We will need volunteers to staff future classes, events or activities and will need your help and support.

Peace,

*Mina Stagner*

2021 Church Council President  
903-279-8241



**Leader Retreat/Huddle**

**Saturday, September 11**

**9:00am - Noon**

**Sanctuary - Please RSVP**



**Rally Day - Sunday School Kickoff**

**Sunday, September 12th**

**9:00 am - Meet the Teacher,  
Discover Your Classroom, Breakfast**





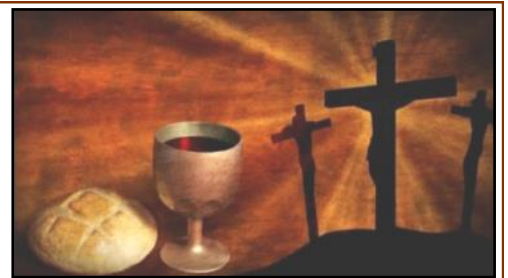
## Call Committee Update,

"The Call Committee would like to extend a sincere thank you to everyone who completed the congregational survey. We are immensely grateful for the time and thought that was put into each and every response. You've given us a lot to think about and pray on. With these results we are hoping to move forward with completing our Ministry Site Profile, which is essentially New Life's job listing. While we've taken quite a bit of time on this, we feel that it's best to move through this process thoroughly so we can find the right person for our congregation. We continue to meet every week to discuss different portions of the profile and take deep dives when warranted. Our aim is to finish the profile in the coming weeks so that it can be submitted to the ELCA. Based on our responses and our congregation's needs we will be matched with potential candidates and beginning the interview process. As always, continue to pray for us and our work.

Thanks!

*Abby Roszak*

**Communion Elements are \$40 per month**  
**Please let the office know if you would like to**  
**sponsor a month in 2021. 281-485-1818**  
**(Currently we are using individually packaged elements)**



**The 2021 Flower Chart is up in the Narthex.**

**If there is a week in 2021 you would like to sponsor Altar Flowers from Wyndowbox Florists, please put your name on the chart and let the office know.**



New Life appreciates all work done to the Glory of God! Let us know if we missed thanking someone.



**Seniors (55+)** will NOT meet Wednesday, September 1st due to Health Concerns for all.

**We will pack school kits on October 6th at the next Senior Lunch.**



**THANK YOU** to Carole & Walt Wright, Joann & Dennis Morrison, Lynn Cope, Terri Kiser, Helen Beckman, Mary Anna Vance, Barbara & Matt Scott, Tamsey Mims, Cheryl Robinson, , Becky Homerstad, Nancy & Roland Bryars and Barbara & Bubba Flowers.

**THANK YOU** to **EVERYONE** who has been able to help during this “unusual” time! With COVID firing back up... I know that some of you will be “playing it safe” again. **Please do what you have to do!** If you think you might like to help with one of the remaining dates, please give Barbara Flowers or the church office a call.

**It is ONE day every 8 weeks! Only 2 more opportunities to help this year!**

**Sept 20-24**

**Nov 15-19**

If you know someone who might benefit from this program, you can call *Pearland Meals on Wheels* @ 281-485-5081 for information.



Thank you: Lynn Cope, Terri Kiser, Elna Ritter, Cheryl Robinson, Linda Stavinoha, Charlotte Thurman and Korie Williams for the volunteer time they have contributed in the office this month.

**You are very much appreciated!**

*New Life Staff*

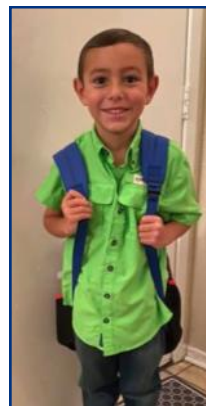
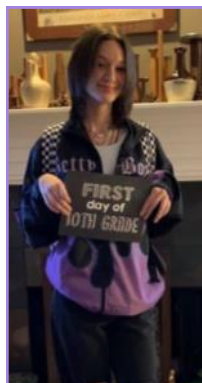
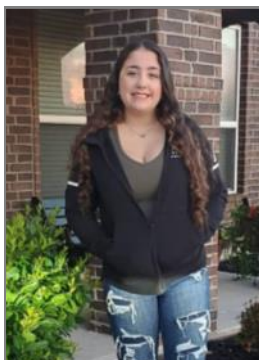
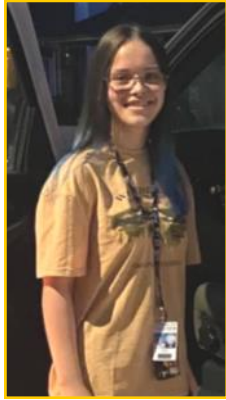
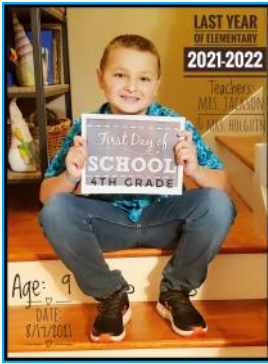
## Thank You! From Church Council & Staff

- To all members and ‘friends’ for stepping in and supporting “your” church through offering, in-person services and multiple outreach and property needs.
- To the 2021 Church Council for leading New Life in this troubled time.
- To the congregation for the support in sending the kids to Luther Hill camp in July. These ‘first-timers’ loved it and will never forget the experience.
- To Pastor Bill for bringing us the Word and preaching the Gospel each week. And for his encouraging messages each Wednesday afternoon.
- To Bubba Flowers and entire Call Committee for their commitment to the goals of the church.
- To all those who clean and re-clean to allow in-person services to continue safely.
- To Johnny Salvesen for his multiple musical talents that make for a great experience in Worship (Piano, organ & guitar) and for all the extra that he does beyond his “job”.
- To Johnny for providing our youth with Children Sermons.
- To Tiffany Brown for getting the screen shows ready and updated each week.
- To Mike Kiser, Korie Williams, Elna Ritter and John F. Gestl for providing the sound and technical expertise to stream and click thru the screens for Worship Services.
- To Cheryl Robinson for taking care of ant and wasp issues.
- To the Bereavement team and ladies for the preparation of lunch after Fernando Marcha’s family gathering after his mother’s funeral.
- To Lynn Cope and Babs Scott for creating a letter to families with children to spur their attendance and commitment to Sunday School.
- To Karen Sweet Cheney and Lynn Cope for stuffing and mailing the Sunday School letters.
- To Babs Scott for purchasing stamps for the return Sunday School postcards.
- To Linda Stavinoha, Korie Williams, Becky Homerstad and others for sending out greeting cards.
- To everyone who has encouraged, called and/or checked up on someone from your Church family.
- To Judy Foucheaux, Lynn Cope, Terri Kiser and Karen Cheney for volunteering at CHH doing odd jobs distributing food!
- To Property team members especially: Rudy Moreno for inspecting the A/C and repairing the narthex brick wall; to Walt Wright for trimming bushes and changing burnt-out light bulbs and ceiling tiles; to Mike Kiser for repairing church roof.
- To the New Life quilters who continue to make beautiful quilts for Lutheran World Relief.
- To Elizabeth White for stepping up to help sew quilts.
- To the Altar Guild for keeping up with Sunday morning prep.
- To those who continue the good works of New Life’s outreach programs at home and on New Life Property.
- To New Life for continued support and for hosting multiple groups on our site. (Several AA/ Alanon groups, Girl Scout troops, the Pearland Retired teachers, etc.) Most are meeting virtually, but they are grateful to know that New Life will be here for them when we return to group activities.
- To all those on the prayer team, GLOW and beyond who are praying for this congregation, friends and family.

**We appreciate you ALL so much!**



# 1st Day of School 2021





**Thursday, September 16** the Keep Pearland Beautiful lecture series topic, presented by Brazoria County Master Gardeners, is “Trees for the City”. Go to KPB web site for detailed information and registration.

**Saturday, September 18 is City Wide Cleanup** and we will be picking up litter on Orange Street, our adopt-a-Spot. Meet at the church at 8:30. Masks, gloves, bags, and refreshments will be provided.



**Care and disposition of batteries.** Batteries should be stored in their original packaging or a battery storage container in a dry place at room temperature. Do not store in the freezer, refrigerator, or near a heat source.

Replace all used batteries in a device at the same time. Insert the negative end first and push down until positive end clicks into place. Check flashlights and devices you may not use often to be sure the battery is still good. A dead battery may corrode or explode if left in a hot place such as a garage or car. Remove batteries in devices you don't use on a regular basis, such as seasonal decorations. Change batteries in smoke alarms annually.

Since 1996, **single use (alkaline) batteries**, no longer contain hazardous metals and may be disposed of in the trash. Button batteries found in watches and hearing aids do contain hazardous metals and should be disposed of properly. The Stella Roberts Recycle Center at the John Hargrove Environmental Complex on Magnolia Blvd. accepts all types of batteries, single use and rechargeable. **Rechargeable (lithium, lithium-ion, and zinc) batteries must be recycled.**

To recycle batteries safely, cover the terminal with non-conductive clear plastic tape and placed in a cardboard box or plastic container and take to the recycle center. Car batteries and large rechargeable batteries, such as in electric lawn equipment, can be recycled at the store where they were purchased.



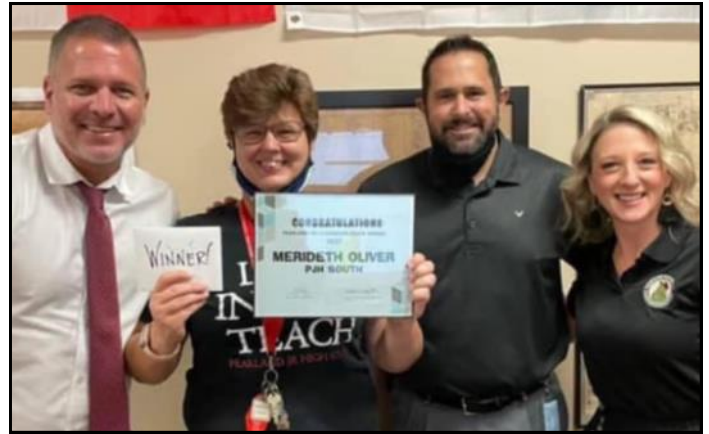
If a battery begins to corrode, do not pick it up. Put on disposable plastic gloves and soak a cloth with vinegar. Put the battery in a small plastic container and cover with sand or dirt, seal the top and throw away in the trash. Wipe anything that may have the corrosive powder on it with the vinegar cloth and throw cloth and gloves away in a plastic bag.

Stay safe and I hope to see you on Sat. the 18<sup>th</sup>, if you are able, to help with the cleanup.

*Helen Beckman*



*Carol is celebrating 6 years Cancer Free!*



**LUTHERAN WORLD RELIEF**

**Seniors packed 75 Personal Care Kits on Aug. 4th.**



**Thank you to everyone who donated and/or participated in the packing of Health Kits in August! School Kits will be packed in October at the Senior Lunch.**



**We still need 200 70-count Spiral notebooks for the 220 kits we are making.**

# Christian Helping Hands

## \* Emergency \* Need! The shelves are bare!

Ramen Noodles, Mac & Cheese, Soups, Tuna, Canned Tomatoes & Sauce, Peanut Butter, Jelly and Dry Beans.

Other items: Cereal, Cooking Oil/spray, Single serve meals (canned and packets), Shampoo (& Conditioner), Diapers & Baby Items, Razors & Shaving Cream



Checks can be mailed to: 3402 Swensen Rd, Pearland, TX 77581  
Be sure to put "New Life Lutheran - to be used for food" in the Memo!



## Property Updates

Lots of things going on behind the scenes...

Property updates, cleaning, replacements, etc. are being done continuously. See the list below for items needed for year-round maintenance. If you see something that needs to be addressed or you have a talent you are willing to share, and time to share it, please let Charlie Gaevert, Rudy Moreno or Karen Sweet-Cheney know. (Even if you only have 15 minutes on a Sunday to help with something you would like to share!) Suggestions are welcome as well.



Property Team Meetings will be at 6pm on the 1st Thursday of the month.



## New Life Needs: Please consider donating:

Air Filters: 20x18x1 (1) & 20x20x1 (10 every other month)

Light Bulbs: T-12 and T-8 LED/Fluorescent Tubes  
(we are now ONLY using LED - Daylight)

(WalMart has LED tubes that can be used as T8 OR T12 - Box of 10 for \$42.88)

Other constant needs: Bottled water is used year round (all sizes), Coffee (regular and decaf), little creamers (mini moos, Hazelnut & French vanilla), Z fold paper towels & 2 ply toilet paper (Charmin ultra plus).



Thank you to all those who provide special offerings to help with Lawn Care. There is a new signup sheet in the Narthex for 2021 to help offset the shortage New Life is currently incurring. Lawn Care is \$380 per month for the front of the property. The ball teams who use the back field are under contract to keep the field mowed.





*There are Sunday School classes for everyone (youth & adults).*

*Take time for Life-Long Learning!*



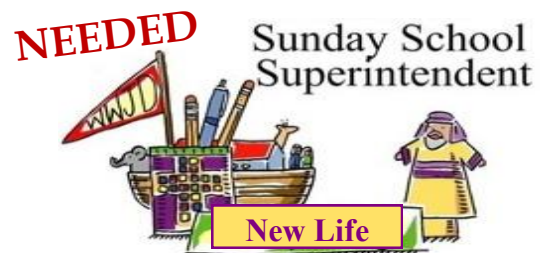
The Mary Martha Circle will meet Wednesday, August 18th at 9A.M. in the Fellowship Hall. At 9:30 Bible study starts. We will be doing the summer series, "Just L.I.F.E ." (Liberation Is For Everyone!) found in the Gather magazine. Copies of the study will be available for anyone who is not a subscriber.

### Backpack Blessing August 15th



New Life is looking for a Sunday School Superintendent and teachers for several ages. Please contact Mina if the Lord is moving on your heart and mind to lead in this capacity.

Dear parents and students,  
Youth Sunday School will restart on Rally Day, September 12th.



## Adult Sunday School



The **ABC** (Adult Bible Class) in-person Bible study - Sundays in the Fellowship Hall @ 9:30am — Social Distancing and Masks required.

### Sunday Zoom Gospel Study

Join Pastor Bill in an online *Zoom* virtual Adult Christian Education Bible Study each Sunday at 9:30 am. Each 30-minute session will feature a study and discussion of the Gospel Reading for that day.

### Gospel Bible Study



The DVD Bible Study Class is postponing their restart until after many of their members get booster shots. Notices will go out when the decision to reconvene is made. Thank you for your patience!

*Donna & Nolan*





## ELCA SPIRITUAL CENTER DAILY BIBLE READINGS

As we continue to share in the emerging 21st century ministry, please take time as you are able to visit the Spiritual Center at the ELCA website: [www.elca.org/spiritual.html](http://www.elca.org/spiritual.html)

*"To be Christian without prayer is no more possible than to be alive without breathing." - Martin Luther*

### GOD'S PEOPLE PRAY!

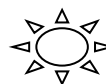
Please continue to pray for those staying home for COVID concerns, living in assisted living and nursing facilities as they are unable to leave their homes/rooms.

**Pray for renewing health:** Gebron Alvarez, Chris Baldauf, Bates family, Susan Bickham, Bryan & Lucas Bradford, Ed & Robyn Bradford, Leta Branum, Theresa Breuer, Floyd Brown, Hap Cummings, Kyle Cunningham, Foster Foucheaux, Nancy & Alan Fuller, the Gestls & Goschs, Harvey Hamilton, Homerstad families, John Howell, Linda Hudgens, the Kisers, Larry Magers, Tina Meyer, Tamsey Mims, Pete Mistrot, Cheryl & Rich Newell, Kerrie Nichols, Hubert Pardue, Allison Patschke, Allen & Viola Patschke, Ruth & John Roberts, Scott & Leeta Sanger, Kathleen & Pastor Bill Schwertlich, Julia Sweet, Karen Sweet-Cheney, Patrick Sweet, Claudia Thomas and Vera White.

**Special prayer needs:** Adams & Robinson families, Barrett and Ruddock families, Barron, Larson, Reed & Moore families, Bradford family, Broughton & Boeker families, Brown & Fudge families, Brown & Grieger families, Buckels family, Castillo & Sandoval families, Childs family, Dahse family, Gosch family, Grage family, Kaiser family, Kyle Lawson, Lawson family, Marcha, Castillo & Salazar families, Mistrot & Meyer families, Nicholls family, Phelps, Butler & Schmidt families, Purdum & Hayes families, Schroder family, Tanksley & Thomas families, Tatuaca family, Thomas family, Vavrecka family, Welch family, Wellman family, White family, Wilson family and the Young & Harrah families.

**New Life prays for those serving in the military:** Keagan Barthelme, Jeremy Foster, Zach Gottlieb, Eric Metzger, Mason Moore (reserves), Ryan Newell, Berkeley Scott, Joe Wishart & Christopher Young.

## PRAYER CORNER



### Prayer for September

May You Have:

Enough happiness to keep you sweet,  
Enough trials to keep you strong,  
Enough sorrow to keep you human,  
Enough hope to keep you happy,  
Enough failure to keep you humble,  
Enough success to keep you eager,  
Enough wealth to meet your needs,  
Enough enthusiasm to look forward,  
Enough friends to give you comfort,  
Enough faith to banish depression,  
Enough determination to make each day better than yesterday.

And God to Keep You going..

Bless You & Your Loved Ones.

inspire. Passion  
soul sensation



These petitions are offered as guides to prayer for the global, social and outreach ministries of the church. Thank you for your continued prayers for the life and mission of this church.



Prayers of the day go to the ELCA Prayer Ventures webpage

<https://elca.org/Resources/Prayer-Ventures>

Monthly prayer pages are available in Word and PDF format

***In Sympathy*** – We extend our Christian sympathy to Dianne Tanksley (New Life Quilter), her family and friends for the loss of her brother, Lt. Col. David Thomas who died in Christ on Friday, August 20th in Pilot Point, TX.



May the power of the Holy Spirit and the love of Christ bring comfort and consolation to all who mourn.

We extend our Christian sympathy to the family and friends of Donald Purdum who died in Christ on Friday, August 20th.  
Service information TBD at a later date.



# September

2021



## Birthdays

Kate Bates	09/05
Scott Sanger	09/07
Isabel Moreno	09/11
David Wishart	09/11
Linda Miller	09/12
Barbara Flowers	09/13
Laura Gaever	09/13
Stacia Sweet	09/13
Bob Connors	09/15
Katherine Browdy	09/16
Gary Bishop	09/17
Abbey Grage	09/18
Carole Wright	09/19
Doug Barron	09/20
Terri Kiser	09/21
Sheila Schmidt	09/21
Parker Perez	09/22
Lynn Cope	09/23
Norm Griffith	09/23
Victoria Manrique	09/23
Cheryl Robinson	09/25
Benita Kovar	09/26
Vivienne Reed	09/29

## Wedding Anniversaries

Guadalupe & Austin Caballero	09/07
Shirley & Norm Griffith	09/08
Tally & Trent Perez	09/08
Maria & Roland Moreno	09/12
Elaine & Larry Damewood	09/05
Terri & Mike Kiser	09/21
Vera & Tony White	09/22
Judy & Foster Foucheaux	09/27

## Baptismal Anniversaries

Brandt Barrett	09/09
Nicole Martinez	09/14
Casey Crawford	09/18
Kyle Crawford	09/18
Laura Krajca	09/18
Vanessa Rincones	09/19



If your name or date needs updating, please contact the New Life office to have your name included in next year's posting.

Sun	Mon	Tue	Wed	Thu	Fri	Sat
<div>September 2021</div>			1	2	3	4
				6p Property Team Meet	Church Office Closed	10:30a Phoenix Group ( ) 7p Word Fellowship Chr
5	6	7	8	9	10	11
8a Traditional Worship 9:15a Sunday School H 10:30a Contemporary S 12p Word Fellowship Ch	Labor Day 6p Modified Yoga 8p AA Meeting (Co-Ed) 8p Ala-non	9a Quilters Workshop 7p Word Fellowship Chr		7p GLOW	Church Office Closed	9a Leaders Huddle 10:30a Phoenix Group ( ) 7p Word Fellowship Chr
12	13	14	15	16	17	18
Grandparents Day Rally Day 8a Traditional Worship 9:15a Sunday School H 10:30a Contemporary S 12p Word Fellowship Ch	6p Church Council Mee 6p Modified Yoga 8p AA Meeting (Co-Ed) 8p Ala-non	9a Quilters Workshop 7p Word Fellowship Chr	9:30a Mary Martha Bibl		Church Office Closed 6p WOW - Women of Wc	8:30a Orange St CleanU 10:30a Phoenix Group ( ) 7p Word Fellowship Chr
19	20	21	22	23	24	25
8a Traditional Worship 9:15a Sunday School H 10:30a Contemporary S 12p Word Fellowship Ch	Meals on Wheels 6p Modified Yoga 8p AA Meeting (Co-Ed) 8p Ala-non	Meals on Wheels 9a Quilters Workshop 7p Word Fellowship Chr	Meals on Wheels	Meals on Wheels	Church Office Closed Meals on Wheels	10:30a Phoenix Group ( ) 7p Word Fellowship Chr
26	27	28	29	30	1	2
8a Traditional Worship 9:15a Sunday School H 10:30a Contemporary S 12p Word Fellowship Ch	6p Modified Yoga 8p AA Meeting (Co-Ed) 8p Ala-non	9a Quilters Workshop 7p Word Fellowship Chr			Church Office Closed	10:30a Phoenix Group ( ) 7p Word Fellowship Chr
3	4	5	6	7	8	9
8a Traditional Worship 9:15a Sunday School H 10:30a Contemporary S 12p Word Fellowship Ch	6p Modified Yoga 8p AA Meeting (Co-Ed) 8p Ala-non	9a Quilters Workshop 7p Word Fellowship Chr	12p Senior Lunch	6p Property Team Meet	Church Office Closed	10:30a Phoenix Group ( ) 7p Word Fellowship Chr