



# THE WINDOW

A Publication of Germantown Presbyterian Church

March 2020

## IN THIS ISSUE

**WHAT IS LENT?**

**HOW DO I  
OBSERVE LENT?**

**WHAT DOES GPC  
OFFER TO ADULTS &  
CHILDREN DURING  
LENT?**



Dear GPC Family and Friends,

Last Wednesday was Ash Wednesday, and we are moving into one of the most important seasons of the Christian year: Lent. Lent has many meanings and themes, and we will emphasize them all at GPC over the next six weeks.

One of the themes is abstinence or self-denial. We frequently hear people talk about what they gave up for Lent, and they name chocolate, desserts, fast-food, soft-drinks, or some other gastronomic pleasure from which they will abstain for Lent. Other people will attempt to refrain from some kind of destructive behavior like lying or gossiping. Some people fast from watching violent entertainment or from using mobile-phone-related technology during most of the day.

The point of this self-denying behavior is to emulate Jesus' 40 days of fasting in the wilderness before He began His ministry. He fasted from food, which meant bodily deprivation and spiritual discipline. How often do we deny our bodies something that it normally depends on? There is nothing wrong with giving up chocolate, but is it really a daily necessity? (OK, I can already hear people shouting "Yes!".... but I wonder...) In Scripture, when people fast, they do so as a means of drawing closer to God – by temporarily denying their bodies of food as a means of reminding themselves of their daily dependence on God. Thomas Merton said: "The goal of fasting is inner unity. This means hearing, but not with the ear; hearing, but not with the understanding; it is hearing with the spirit, with your whole being." What necessity in your life can you fast from during Lent in order to hear God better?

Another theme of this six weeks is engagement. Not only do we refrain from something that might be negative, but we also take up engaging in positive behaviors that will bring benefits – to us or those around us. One of the best habits of engagement I know is writing one note per day to tell someone how much you appreciate them. Other engaging habits are using only positive words when dealing with other people, even in conflict. Some people make it a habit to read a chapter of the New Testament once per day or to pray in a new way (i.e. at a certain time every day, or with their palms facing up to "receive" from God). What positive habit of engagement can you pick up during Lent?

Another theme is learning and self-reflection. During the earliest years of the church, new converts to Christianity joined the church on Easter Sunday. They were called Catechumens, and they spent the weeks of Lent learning the catechisms and basics of faith. They prepared themselves for baptism by sitting with older Christians and being mentored in the faith as they developed their relationship with God through Christ. Lent was a time of self-reflection on their need for God and their love for Christ. We encourage everyone at GPC to do something similar. What can you learn about yourself during this time? Can you keep a journal, and at the end of the day reflect on where and how effectively you lived as a follower of Christ?

We will have some very important and meaningful worship services during Lent, including Confirmation Sunday on March 1 and a very special music service on March 29. Each week during Lent we will focus on some of the "basics" of our faith during our sermon series entitled "Boot Camp for the Soul." Lent can be a very formative and growing season for us, and I look forward to going through this month of March with you as we anticipate Holy Week at the end of Lent. May God bless you as you deepen your discipleship during this season.

Grace, Mercy, and Peace in Christ,

*Will*



# OUR LENTEN JOURNEY

Contributed by Rev. Susan Carter Wiggins

What is Lent? It is the Christian season that immediately precedes Easter.

When is Lent? In Western Christianity, Lent begins on Ash Wednesday and continues for the 40 days (excluding Sundays) before Easter.

Why do Christians observe Lent? Lent is a time when many Christians prepare themselves for the celebration of the resurrection of Christ, our Lord, by walking beside Him on His journey towards His suffering death on the cross.

How does observing Lent help us in our Christian faith? Observing Lent helps us to be still and reflective and better understand Jesus' teachings, preaching, and healing. The observance of Lent also helps us envision the great burden Jesus carried as He tried to convey His mission of salvation for all people to His disciples (including us), and that He needed them (us) to carry forth His mission and ministry of loving our neighbors just as we love ourselves into all the world following His death, resurrection, and ascension into heaven.

How do we observe Lent? There are many ways to observe Lent: many people observe a period of fasting, moderation in areas of their lives, and spiritual discipline. The purpose is to set aside time each day of the 40 days to quietly be with Jesus and to keenly take note of what it means in your own life that He lived a life worthy of following in our own lives, that He died a suffering death for our sakes, and that He rose again from the dead and ascended into heaven. What does all this mean for you in your own life? That is the question to ask yourself during this season of Lent.

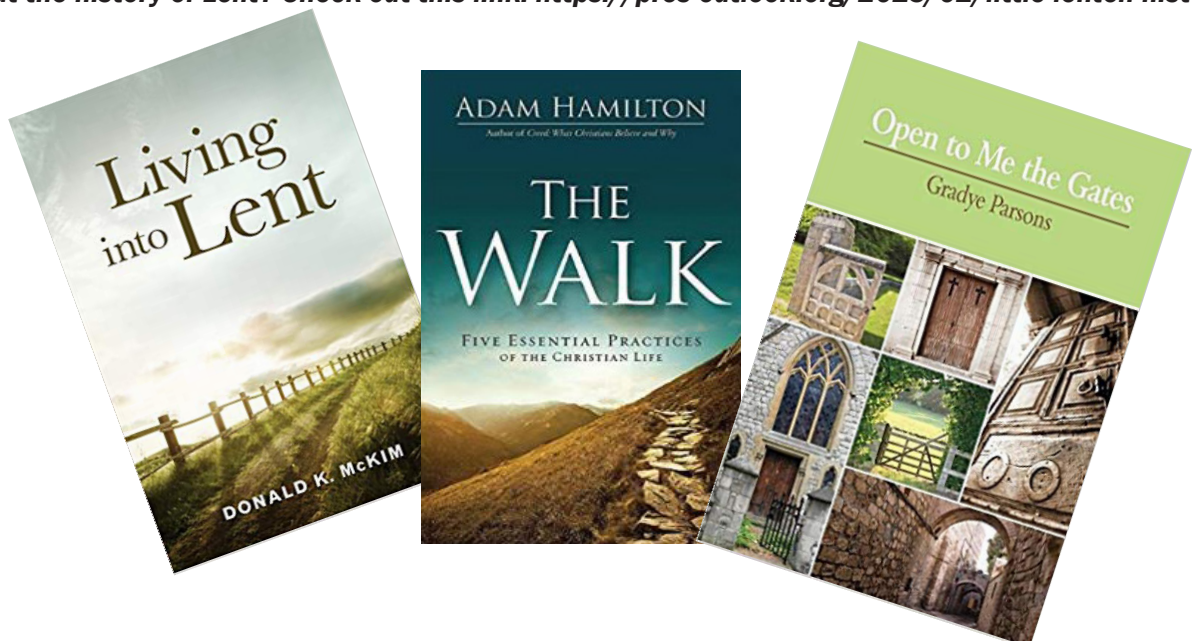
How will you feel after observing Lent? If you observe Lent, participate in some or all of the additional worship services such as Ash Wednesday, Holy Week noon-day services, Maundy Thursday worship, and Good Friday service, you will be ready, really ready for Easter morning and the celebration of our risen Lord's glorious resurrection!

If you'd like ideas on how to observe Lent, please contact Pastor Susie Wiggins at [susiew@germantownpres.org](mailto:susiew@germantownpres.org). She's got lots of great ideas and resources!

GPC is offering a terrific way for adults and children to observe Lent this year. Adults - come to Wednesday night Compass and participate in the 4-week Lenten series led by Pastor Susie based on the book *The Way* by Adam Hamilton (see page 16). Kids - come to the Lenten Art Series being offered downstairs where a different art project will be offered each week. Come for one, come for some, come for all and share this Lenten time with your GPC family. See page 11 for more details on the children's program.

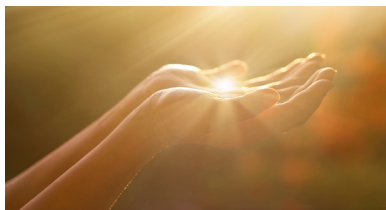
There are some great books on Lent (like those below) in the GPC library, and some other ideas for how to observe Lent follow on the next page.

**Wonder about the history of Lent? Check out this link: <https://pres-outlook.org/2015/02/little-lenten-history/>**



# SOME WAYS TO OBSERVE LENT

These ideas come from The Practical Disciple. (Published by: <http://ThePracticalDisciple.com>. Permission granted to reproduce for non-commercial purposes. ©2012)



## **Pure Praise:**

The Discipline of Praise: For the next 40 days have a prayer time that will be nothing but a time of praising God. Use the following threefold pattern of praise developed from

Psalms 18 and others like it:

- 1) Say, "I love You."
- 2) Acknowledge God for who God is.
- 3) Acknowledge God for what God does.

Praise and thanks are not the same things. Look someone in the face and tell them "Thank you." Now tell them "I love you." You'll both feel that those are very different exchanges.

1. David begins the Psalm saying, "I love you, O Lord, my strength." 2. Next, David spends a lot of time just acknowledging who God is. "The Lord is my rock, my fortress and my deliverer; my God is my rock, in whom I take refuge." Psalm 18:2.
3. David also acknowledges what God does and shouts about it to others in his song.

## Tips For Getting Started

If you are struggling to find words start by listing who God is to you. List what you have seen God do. For example, God gave me strength, rest, peace, an amazing family. God provided for me. God healed a friend. God opened a door. Now begin praying by saying, "I love you" and use your words acknowledging who God is and what God has done as your first prayer of praise for the next 40 days.

**The Bible's "Top Forty:"** The following list is a compilation of 40 core passages from the Bible. This list was taken from the book, The Disciple-Making Church, by Rev. Glen McDonald. If you read one of the selections each day during Lent (excluding Sundays), then by the time Easter comes you will have experienced a good overview of the Bible. Following are some tips:

- A. Set your Bible and this list in a prominent place so you will see it each day and be reminded to read.
- B. Create a routine by reading at the same time and place each day.
- C. Never make an exception! Do whatever it takes not to miss your reading.
- D. If you miss reading don't try to play catch up, just start where you left off and keep moving. Pick-up a missed reading on a Sunday or one of the lighter days of reading.

1. Creation, Eden & the Fall (Gen 1-3)
2. Noah & the Ark (Gen 6-8)
3. Abraham & the Sacrifice of Isaac (Gen 22)
4. The Story of Joseph & His Brothers (Gen 37-45)
5. Moses in the Nile & at the Burning Bush (Exo 1-4)
6. The Ten Plagues, Passover, & the Red Sea (Exo 7-14)
7. The Ten Commandments (Exo 20)
8. Joshua Confronts the Walls of Jericho (Jsh 1-6)
9. The Misadventures of Samson (Jdg 13-16)
10. The Love Story of Ruth (Rth 1-4)
11. David vs. Goliath (1 Sam 17)
12. Job's Plight & God's Response (Job 1-3, 38-42)
13. The Shepherd's Psalm (Psa 23)
14. David's Personal Confession (Psa 51)
15. Psalms of Worship & Praise (Psa 93-100)

16. God's Intimate Love & Care (Psa 139)
17. Soaring on Wings like Eagles (Isa 40)
18. The Messiah as Suffering Servant (Isa 53)
19. The New Covenant is Predicted (Jer 31)
20. Three Men in the Oven (Dan 3)
21. Daniel & the Lion's Den (Dan 6)
22. The Story of Jonah the Reluctant Preacher (Jon 1-4)
23. The Christmas Story (Mat 1-2; Luk 1-2)
24. The Word Became Flesh in Jesus (Jhn 1)
25. Jesus' Sermon on the Mount (Mat 5-7)
26. Jesus Feeds 5000 & Walks on Water (Mrk 4)
27. Jesus Talks to Nicodemus (Jhn 3)
28. Parables of the Good Samaritan & Lost Son (Luk 10,15)
29. Jesus' Prediction of the End of the World (Mat 24)
30. Palm Sunday, Last Supper, Trial, & Crucifixion (Mrk 11-15)
31. Jesus Rises from the Dead (Luk 24, Jhn 20)

32. The Holy Spirit Arrives on Pentecost (Act 2)
33. Paul Meets Jesus on the Road to Damascus (Act 9)
34. Nothing Can Separate Us From God's Love (Rom 8)
35. Love is the Greatest Quality (1 Cor 13)
36. The Fruit of the Holy Spirit (Gal 5)
37. Rejoice in the Lord Always (Phi 4)
38. The Hall of Fame of Faith (Heb 11)
39. Because God is Love, We should Love Each Other (1 Jhn 3-4)
40. Our Future in Heaven (Rev 21-22)

## **Tame The Tongue:** For 40 Days Adopt Three Intentions:

- 1) Do No Harm
- 2) Encourage Others
- 3) Be Positive

Do no harm - "Let your speech always be gracious, seasoned with salt, so that you may know how you ought to answer each person." Colossians 4:6

Taming begins with restraining your tongue. Refrain from hurtful words about or to others. Pay attention not only to the content of what you say but also to how you say it. Abstain from speaking sarcastically or snidely. Also, avoid complaining in general. Being negative often depletes others and sows seeds of discontent. Criticism and grumbling can rapidly divide a community.

Encourage others - "Therefore encourage one another and build one another up, just as you are doing." 1 Thessalonians 5:11  
Encourage at least one person a day.

Be positive - Your speech can influence others' thoughts. So you can prompt good thinking by speaking about whatever is true, honorable, just, pure, lovely, commendable, excellent or praiseworthy. If you do, you will be a fountain of joy.

1. Start each day with a simple "help me to do no harm, encourage others and spread goodness." 2. Evaluate at the end of each day. As you lay down to sleep ask yourself, "How did I restrain my tongue? How did I encourage? How did I share good things?"



# MUSIC & WORSHIP ARTS

## A Celebration of the Life of Bobby Lanier

I want to begin this month's Music Notes by celebrating the life of Bobby Lanier...especially his love of and support for the Music Ministry at GPC!! Bobby was indeed my "Go-To" person for projects/fund-raising/for anything I needed to meet the needs of a growing GPC Music Ministry. Without the support of Bobby, and others who shared his vision and passion for growing our music program, we would not have the excellent music ministry in place that we enjoy today. Bobby will always be remembered and never forgotten!! To GOD Be The Glory!

## The Season of Lent

> Ash Wednesday, February 26/March 1st First Sunday in Lent: The Season of Lent begins with our Ash Wednesday service February 26. All of the Sundays in March are part of Lent. April 5 is Palm/Passion Sunday leading us into Holy Week. (During Holy Week, April 6-10, we will join with four other community churches to hold community services and lunch at noon. GPC will host on Wednesday, April 8.) At GPC we have our very moving Maundy Thursday service at 6:30pm April 7, and "Music and the Spoken Word" service on Good Friday, April 9 at 6:00pm. Of course we celebrate Easter Sunday with the Chancel Choir and Brass Quintet at both morning services Easter, April 12.

> Our Maundy Thursday service is one of the most holy, worshipful, and meaningful in our church year. Circle the date Thursday, April 9 at 6:30pm in the sanctuary. Come at 5:30pm if you want to eat supper beforehand. The Chancel Choir with string quartet will present The Suffering Servant by K. Lee Scott as an integral part of our Tenebrae Service (candles are extinguished following scripture and music). The service ends in darkness as "Were You There" is sung.

> On Good Friday, Alex and other musicians will join our ministers in offering "Music and The Spoken Word" at 6:00pm in Evans Chapel. Appropriate organ selections and our Chapel Singers (a small group from Chancel Choir) will offer worshipful musical selections between the reading of scripture. A very sober, worshipful experience.

> Sunday, March 29 both 8:30am and 11:00am services On Sunday, March 29 the Chancel Choir and Chamber Orchestra will present a service of music using selections from Handel's Messiah. Written in 1741, this major choral work has inspired audiences and services of worship through the ages. We will present selections from Parts II and III (known as the Easter portion of the Messiah). After the "Overture" (which will be during our pre-service music time) we begin our worship with "Behold

the Lamb of God" (John 1:29). The service ends with the magnificent chorus "Worthy Is the Lamb that Was Slain" (Revelation 5:12-13). This is a Sunday to mark on your calendar and invite guests to join you. The Chancel Choir, our superb soloists, and instrumentalists from the Memphis Symphony have worked hard in preparation. You will want to be present!!

## THANK YOU For Your Continued Support of Music at GPC

As I said in the beginning of this article, we celebrate the life of Bobby Lanier. In my first few weeks as Director of Music at GPC, then GPC Pastor Dr. Denton McLellan introduced me to Bobby Lanier and Bill and Diana Watkins. He said these people would provide the support I needed to build a first-class music program at GPC! Denton was correct. They were with me all the way. Many, many others have followed in their footsteps and continue to support music at GPC through their gifts to the Music Fund and The Teachey Scholarship Fund. Your continued donations, in addition to the support of the annual church budget, have allowed me the opportunity to develop and maintain the Music Ministry that we now enjoy. Thank you for your continued support. Bobby played a key part in the quality of the music program at GPC, but everyone's support is needed and appreciated.

Thank you. I look forward to seeing you in WORSHIP!!!

Jerold C. Teachey, D.M.  
Director of Music



# CONGREGATIONAL CARE

## Samaritan Counseling Centers Info Luncheon & You're Invited!

**Samaritan Counseling Centers Information Luncheon:  
Come and meet Board Members and Staff!**

**Sunday, March 15 at 12:15pm in Warren Fellowship Hall**

**Come and learn all about the Samaritan Counseling Centers  
of the Mid-South and meet some of the Board Members!**



Samaritan Counseling Centers have been caring for people in our area since 1981, providing access to quality professional, compassionate, and affordable mental healthcare. Their wellness-oriented philosophy emphasizes individuals,

couples, and families achieving balance of emotional, relational, and spiritual health. Recognizing that counseling can seem to be out of reach financially for many people

and not wanting anyone to lack needed mental healthcare, Samaritan Counseling has created the Silent Samaritan Fund, which subsidizes counseling fees as needed. This fund is made possible through generous donations of community members, churches, businesses, and foundations. In its 39 years of service to the community, Samaritan Counseling Centers of the Mid-South have donated \$1.5 million in charitable services to those in need. Germantown Presbyterian supports Samaritan Counseling Centers of the Mid-South by providing counseling space on the first floor of the newly renovated Evans Chapel building.

For more information and/or to donate to the Silent Samaritan Fund contact: Rev. Susie Wiggins, MDiv., LAMFT, and Samaritan Counseling Centers board member - [susiew@germantownpres.org](mailto:susiew@germantownpres.org); or Rev. Rod Spencer, MDiv., LPC and Samaritan Counseling Centers therapist - 901-729-3900; or [info@samaritanmemphis.org](mailto:info@samaritanmemphis.org).

## BELONGING MINISTRY 2020

### CONNECTING PEOPLE INTO THE LIFE OF OUR CHURCH

The vision of the Belonging Ministry is for everyone at GPC to feel loved and included in our family of faith. In the summer of 2019, our ministry began with a focus on our most recent new members, sharing with them ways to become involved and to shorten the time it takes for new members to feel as though they truly belong at GPC.

The Belonging Ministry is built on the concept that we are all called to build relationships that resemble a cross – vertical with God and horizontal with the people of God. We are called to be bridge-makers and connectors between the people of God and God in Christ Jesus. We are called to help one another grow in faith through both word and deed. This happens through Bible study, discipleship, and fellowship together as a family of faith.

Thus, the mission of the Belonging Ministry is to create a pathway for everyone to belong to our family of faith through active participation. To expand our mission in 2020, the Belonging Ministry will be exploring multiple opportunities to expand our reach. We strive to continue this mission until every single person in our church family feels like they truly belong!

If you want to know more or know of someone who would benefit from our ministry, please contact Pastor Susie Wiggins at [susiew@germantownpres.org](mailto:susiew@germantownpres.org).



# CONGREGATIONAL CARE

## GPC's GRIEF SUPPORT MINISTRY

Grief is the normal and natural emotional reaction to loss or change of any kind - the conflicting feelings caused by the end of or change in a familiar pattern of behavior.

The feelings, emotions, and experiences of grieving occur in no less than 40 types of significant loss - with loss through the death of a loved one being the one we most typically associate with grief. It is not until someone experiences significant loss that they really understand how hard grief is to navigate.

Research has shown that many people do not deal effectively with grief, and unresolved grief can and does have long-term negative effects - in the work place, in relationships, even in physical health.

Only by experiencing grief and loss first-hand do people realize how ill-equipped they are to navigate and work through all of the emotions, feelings, and countless manifestations associated with grief.

Books on grief and loss by themselves often do not adequately aid in helping the bereaved navigate this journey of loss and life. Often faith alone is not enough for those who are struggling mightily to learn how to live without their loved one.

Over five years ago, GPC began its Grief Support Ministry in an effort to reach out to bereaved individuals within the GPC family and throughout the greater Memphis/Shelby County area. This ministry seeks to provide an emotionally and physically safe environment in which participants can, in the context of community, become better equipped with tools for effectively navigating grief's difficult journey.

The Grief Support Ministry Group meets the second Thursday of each month at 6:00pm in the church parlor (this month March 12). This ministry is open to the public.

In recognition that a group setting will not always meet the needs of each bereaved individual, the Grief Support Ministry offers a one-on-one setting in which the bereaved can get the help they need.

If you or someone you know has experienced significant loss through the death of a loved one, please consider participating in this ministry through the group or one-on-one setting.

### The Grief Support Ministry Team:

**Stephanie Wall** - The Grief Support Ministry leader, GPC member and former GPC staff member, Elder, Deacon, Certified Grief Support Specialist and Certified Grief Counselor, through the American Academy of Grief Counseling, The American Institute of Health Care Providers, and The Grief Recovery Institute

**Beth Brock** - GPC member, Elder, Deacon, Board Member of Memphis Crisis Center

**Linda Oakes** - GPC member, Deacon, Retired Nurse St. Jude Children's Research Hospital, Hospice Volunteer

### Contact information for Ministry Team:

**Stephanie Wall**-901-494-7786 or stephaniewall@hotmail.com

**Beth Brock**-901-355-0262 or beth.coleman.brock@gmail.com

**Linda Oakes**-901-237-6566 or linoakes@bellsouth.net

Please also note that in the event of inclement weather, the church follows the Shelby County Municipal Schools for weather-related delays and closings.



# CONGREGATIONAL CARE

## SUNDAY FLOWER DEDICATION INFORMATION

Would you like to dedicate the flowers on Sunday in memory or honor of a special someone?

Simply choose your Sunday on the calendar and call the church office at 901-754-5195.

One urn of flowers is \$100.

Two urns flanking the pulpit are \$150.

Checks are payable to Germantown Presbyterian Church. You will need to specify the wording you would like to have printed in the bulletin, and your spot will be reserved on the calendar.

Your special flowers will be lovingly arranged by members of the GPC Flower Committee. The Flower Committee consists of 20 women and an occasional man, who not only arrange flowers for Sunday services, but they often provide flowers for memorial services and receptions. They also decorate the church inside and out for Christmas!

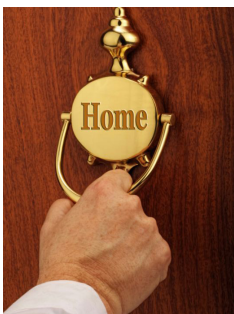


Each week the Flower Committee breaks down the flowers into portable vases after Sunday's service and places them in the cooler in the flower room. This ministry is called Petals and Prayers. Members and staff are encouraged to come into the flower room and take a vase of flowers to a shut-in, or others in need of cheer. The flower room is located just north of the choir loft by the water fountain.

Members of the Flower Committee are: Sandy Jones (Chair), Beth Boyle, Diane Callahan, Jill Crocker, Beverly Froelich, Ellie Gouphnour, Cheri Howle, Patty Jackson, Nicki Lamar, Martha Mayers, Anne McGaha, Jo Lawson, Evelyn Mosley, Diane Newton, Gisela Pickett, Barb Poier, Carolyn Porter, Cynthia Shaw, Nancy Wells, and Billie Work.

## THE FRIENDS IN CHRIST MINISTRY

The Friends in Christ Ministry is a sub-committee of the Congregational Care Committee and is another way GPC wants every member of the church family to feel they belong. Volunteers visit Germantown Presbyterian's senior parishioners – mostly those who are unable to attend worship – on a monthly basis. The purpose of Friends in Christ is for everyone to know they are loved and connected to their church family – no matter their age or ability to come to worship – and for us to be connected and in relationship with each one of them. These relationships are nurtured by home visits, telephone calls, cards, and emails.



If you are interested in volunteering as a visitor or if you know of someone who would like to be visited, please share this information with Pastor Susie Wiggins at [susiew@germantownpres.org](mailto:susiew@germantownpres.org) or call 901-754-5195, ext. 122.

No worries about knowing what to do - Pastor Susie will provide a brief training for all new Friends in Christ, teaching empathic listening, healthy boundaries, careful observation, and other necessary skill sets.

Since its inception in February 2018, we've witnessed both the necessity and the beauty of the Friends in Christ Ministry. It is greatly benefiting our family of faith and helping us to care for each other, no matter our age or circumstance, all in the name of Christ Jesus.



# MISSIONS & OUTREACH

## How Can You Work in Ghana without Ever Leaving Town?

*Contributed by Team Member Erin Bowden and Pastor Susie Wiggins*

On February 9, the Ghana Mission Team hosted an informational luncheon in Warren Hall to share news about the ongoing partnership between GPC and the Upper Presbytery of the Presbyterian Church of Ghana. Team members Erin Bowden, Beth Brock, Ty Hardin, Lance Warren, Molly Miller and Pastor Susie Wiggins each shared various aspects of the July 2019 mission trip, including the mission outreach of the Upper Presbytery and the many ways GPC can support their ministry and mission.

Several ministries of the Upper Presbytery that GPC can support include:

- the Presbyterian Church's "Go Home Project" to the Gambaga Outcast Camp,
- the Presbyterian Agricultural Center at Bawku,
- the Presbyterian Hospital and Nurses' Training College at Bawku,
- the need for mental health care for students.

During the July 2019 trip, we were able to visit an agri station and learn their importance to the area. These stations exist to continuously provide participatory, innovative, and proven agricultural development services that respond to the immediate and strategic needs of farmers in Northern Ghana in an effort to attain food and income security in a sustainable farming environment.

The team was also excited to share the news of how GPC has already helped in the Upper Presbytery. While in Ghana, the team donated cement to help build the new manse for the Director of the Upper Presbytery so that the building being used for offices may continue to house them. We contributed enough to make 3500 bricks! We also donated toward the poor and sick fund at the Presbyterian Hospital at Bawku. This fund helps the poorest of those in need receive medical care.

Another way these folks do evangelism very well is by sending out lay persons to care for the congregations when pastors are few and far-between. These lay persons are called Caretakers and their mode of transportation is bicycles. The Upper Presbytery shared that they need 77 bicycles in order for each Caretaker to have one. Each bicycle costs \$55, and this is but one way that GPC can help. While there, the team donated enough to purchase 8 bicycles to help the Caretakers more efficiently do their work. As an example of how GPC can help, the Cornerstone Fellowship Group held a "Ghana Bicycle" fundraiser at their February gathering and raised enough money to purchase 21 bicycles!

The Upper Presbytery of the PCG is celebrating their 10th Anniversary in June 2020 and has invited GPC's Ghana Mission Team to attend, which the Mission Leadership Team has approved. Several members of the 2019 team plan to go, along with two of GPC's youth. There is also room for others in the congregation to go, too.

The Upper Presbytery will be using these celebrations to raise money to purchase land. They will be centralizing their lay training center, making it easier for Catechists and Caretakers to be trained. While there, we will be able to gift them \$10,000 towards the purchase of their land. The Ghanaian people are such wonderful stewards of what they have and they only build when they have money in hand to do so. This is a great first step towards their goal but there is still so much more.

For more information on the Ghana Mission Partnership, the Upper Presbytery of the PCG, and/or on participating in the June 2020 trip to Ghana, please contact: Erin Bowden ([erinbowden@gmail.com](mailto:erinbowden@gmail.com)), Beth Brock ([beth.coleman.brock@gmail.com](mailto:beth.coleman.brock@gmail.com)), or Pastor Susie Wiggins ([susiew@germantownpres.org](mailto:susiew@germantownpres.org)).



# MISSIONS & OUTREACH

## Local Mission Partners Consider Local Service During Lent This Year



GPC regularly partners with local organizations to support the work they do in the community. The 40 days of Lent provide a great opportunity to become engaged as Pastor Will talked about in his letter. Listed below are our local mission partners and the contact person to help get you plugged in.

Team Read/Team Math at Oak Forest and Willow Oaks Elementary Schools – Linda Oakes

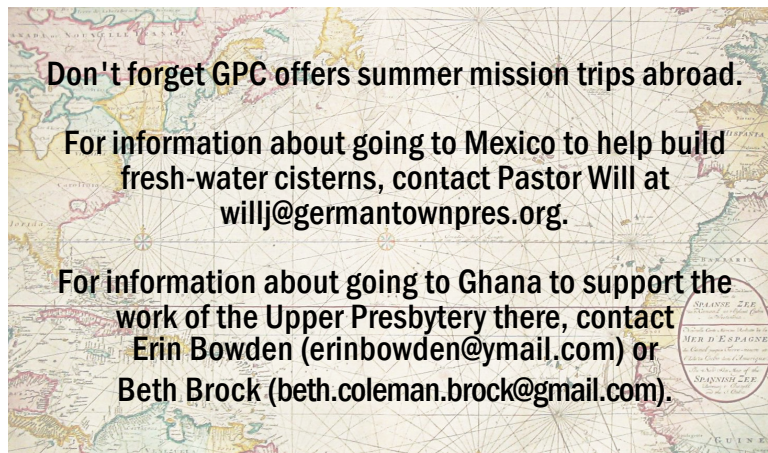
(lino-akes@bellsouth.net)

Memphis Athletic Mission – Jody Waldrop (waldrop2824@gmail.com)

Binghampton Christian Academy – Helen Norman (helenwatnorman@icloud.com)

Room in the Inn – Susan Shirley Hurt (susanshirleyhurt@gmail.com)

Porter-Leath Cottonwood Head Start – Jeff Halfacre (jeff@memphis-ice.com)



## Be One of the Inn Crowd!

GPC is officially a **Room in the Inn (RITI) host church!** March is the last chance to participate in this great ministry before GPC takes off for the summer. GPC hosts guests in the new community room on the second and fourth Saturday evenings each month. Please join the other dedicated volunteers who help show the love of Jesus as GPC ministers to the homeless. Thanks! and we're excited to work with you.



Susan Shirley Hurt ([susanshirleyhurt@gmail.com](mailto:susanshirleyhurt@gmail.com)), the RITI Core Team, & the Mission Leadership Team

### **NEW RITI donations for March:**

DEODERANT (MEN'S & WOMEN'S)

INDIVIDUAL WET WIPE PACKS

INDIVIDUAL KLEENEX PACKS

ANTI-BACTERIAL CLEANING WIPES

TOOTHBRUSHES & TOOTHPASTE

FOOT POWDER



### Mission Partners - Local & Worldwide

For more information about GPC's mission projects locally and globally, go to <https://germantownpres.org/missions-at-gpc> and see where you can plug in to be a disciple and serve.

# CHILDREN'S MINISTRY



## Children's Lenten Art Series

Different Art Project Each Week!

## Wednesday Night Lenten Art Class for GPCKids Begins March 4

During Lent we hope families will pause and take a moment together to reflect upon their own relationship with Jesus Christ. As parents attend the corresponding adult class led by Pastor Susie, children may join our Lenten art classes! This class will be led by Anna White and church member Kathy Kalagias, our own in-house artist! She will use different art media each week to help children think about four important Christian concepts highlighted in The Walk by Adam Hamilton. Please see dates and topics that will be studied below. Come to one or come to ALL! Don't forget to make your family's meal reservation each week by signing the friendship pad at worship. Email Anna White (annaw@germantownpres.org), Director of Children's Ministry, if you plan for your child to attend the class!

Classes for children will be held from 6:00-7:00pm on the following Wednesday nights:

March 4 - Scripture says we hear God when we notice creation with a sense of wonder. Psalm 19 reminds us to take a moment to notice the world around us.

March 11 - The practice of kindness and service requires that we love our neighbor. Jesus' parable of the Good Samaritan shows us how in Luke 10:25-37.

March 25 - Christian witness means to tell others about Jesus, both by our words and by our actions of love and kindness. A City on a Hill in Matthew 5:13-15

April 1 - Throughout His ministry, Jesus told people that following Him meant living differently. Jesus proved that He meant what He said when He offered Himself up as a sacrifice for all people. He did these things knowing God would have the victory over death. John 19:23-30

See page 16 for more information about the Compass series being offered for adults during this same time.

## Play in the Pines Save the Date - April 17-18

Play In the Pines is the annual campout for kids to get a glimpse about what summer camp at Pinecrest is all about. A parent attends this one-night campout with his/her child. This is a great opportunity for campers on the rise, especially kindergarteners or first-time campers who are interested in camp but a little nervous about leaving mom or dad! It's also just a great night of fun for church friends! Mark your calendar for 6:00pm on Friday, April 17 through 10:30am on April 18! The cost is \$30 for a child and \$40 for a parent.

## Mark Your Calendar - June 1-5 VBS & Mission 901

This year 3-year-olds (as of the week of VBS) through rising 5th graders will dive deeper into their faith by putting their **FOCUS** on God and His amazing plan for their lives! They will discover how to trust in what they CAN'T see because of what they CAN see!

Mission 901 Week is for rising 6th graders - rising 8th graders and will be all around the Memphis area during the afternoon hours of June 1-5.

Look for more information and registration for both of these events to open on March 29.

# CHILDREN

**A Special Thank  
For Leading in Worship on**



# 'S MINISTRY

Thank-You to GPC's Children  
on Children's Sunday, February 23



# CHILDREN'S MINISTRY

## Thank you to James Grantham, February's 5th Grade Worship Leader

**The Fifth Grade Bridge program exists** to guide children as they begin to live their lives of faith in Jesus Christ, to encourage friendships among one another, to actively participate in church life, and to successfully transition to GPC youth. Throughout the year you will see 5th-graders reading scripture in worship, participating in retreats and fellowship activities, gathering to meet junior high students, mentoring younger GPCKids at VBS, and serving in the community through Mission 901. Questions about this program can be directed to Anna White, Director of Children's Ministry ([annaw@germantownpres.org](mailto:annaw@germantownpres.org)).



February's 5th Grade Worship Leader was James Grantham.

What is your full name? *James Gammon Grantham.*

Who are your parents and siblings? *Mary K. and David Grantham, 2 younger brothers - Wells and Thomas.*

Where do you go to school? *Farmington Elementary School.*

What have you most enjoyed doing at GPC? *Hanging out with my friends.*

What have you learned at GPC? *I've learned a lot about God and Jesus, and I've learned how to be a good friend.*

In the future what do you hope to experience at GPC? *I'm looking forward to learning more in youth group.*

## Next Paraclete Breakfast is Sunday, March 29



"Paracletos" is the Greek word for encourager. Sixth and 7th grade students serve as encouragers to the 5th graders who will soon be joining them in the GPC youth program. Parents, please be on the look-out for specific information regarding these special Sundays.

Current 5th graders and junior high youth! Don't forget that the next Paraclete breakfast will be on Sunday, March 29 during the Sunday School hour. Mark your calendar to attend! This is a great way to get to know friends who will be part of your group next year. Paracletes, what can you do to encourage your 5th grader?

Parents, we are in need of breakfast sandwiches, so look for a Sign-Up Genius link in Anna's emails.

This is only one of a series of Sundays this coming semester in which 5th graders have the opportunity to experience Junior High Sunday School, begin to know the teachers, and especially begin to connect with a new cohort of church friends.

These breakfasts are part of the Bridge program that exists to guide and develop 5th graders in their lives of faith in Jesus Christ

Questions? Email Anna White, Director of Children's Ministry ([annaw@germantownpres.or](mailto:annaw@germantownpres.or)) or Amanda Mackey, Associate Pastor for Youth ([amandam@germantownpres.org](mailto:amandam@germantownpres.org)).



# CONGREGATIONAL LIFE

## SUNDAY MORNING & SMALL GROUP OPTIONS

All Sunday morning classes meet 9:30am-10:30am.

All of these groups offer a powerful way to come to know the Lord more deeply.

### Psalm 78 MFXS

Coordinator: Kevin Floyd

Room: UL-215 (2nd level)

Psalm 78 class is a group of parents with mostly school-aged children who meet for weekly study and fellowship. Beginning in March the class begins an in-depth study of the Beatitudes. We love to welcome new members.

### Hits of the Ages MFXSA

Coordinator: Alan Callicott

Room: UL-218 (2nd level) MFXSA

The Hits of the Ages Sunday school class membership spans a range of ages from the 50s to the 80s. We're a Sunday School class, but we've also become a group of friends who look forward to our Sunday mornings together! There is always room for more.

We cycle through Bible studies... from the Old Testament to a Gospel to something else from the New Testament. We are looking at the Gospel of John using the NT Wright for Everyone Bible Study Guides. We take turns leading the lesson each Sunday, but leading is not required to be part of the class. We would love to welcome new members!

### Paula's Hearts and Hands FXSA

Coordinators: Elaine Cates, Melissa Ivy, Mary Rogers

Room: UL-212 (2nd level)

Paula's Hearts and Hands combines Bible Study and service to the church. Each week this group gathers around a table to study Scripture and knit prayer shawls, baby blankets, and hats for newborns. These are for members to use and share with friends,

neighbors, family - anyone who has a need. This group is studying Paul's letter to the Ephesians. You're invited to join this class for the Bible study and fellowship whether you can stitch or not.

### Seekers MFXSA

Coordinators: Jean Carroll, Nancy Halter

Room: UL-216 (2nd level) MFXSA

The Seekers class spans a range of ages and always welcomes new members. This winter the group finishes the book of Romans and begins a study on Peter - *Peter, Learning to Be Like Jesus* by Robbie F. Castleman, part of the Lifeguide Bible Studies Series. A copy of this book can be checked out from the GPC library. Members of the class take turns facilitating each lesson, but facilitating is not a requirement of this class. While our group has been together for a while, new members are always welcome.

### Faith in the Real World MFXSA

Coordinators: Susan Bingham, Gray Carter, Scott Hall, David Hopkins

Room: UL-217 (2nd level)

This class is designed for adults of all ages and stages as a way to explore what God's Word tells us about living Christian lives in a divided, post-Christian culture. The studies for this term are: *Faith: Depending on God* and *Forgiveness: Making Peace with the Past*. Both of these books are from the Lifeguide Bible Studies Series, and a copy of each can be checked out from the GPC library.

Key: M (male). F (female). X (married), S (single), A (all ages)

## Bible Studies and Small Groups

Discipleship isn't just for Sunday mornings. Throughout the week, there are a number of other opportunities to gather for study, fellowship, and prayer. Take a look at the groups meeting and get connected!

### Monday

Eat, Pray, Read (monthly book discussion group)

2nd Mondays, 9:30am-10:30am, Church Parlor

Contact: JoEllyn Slott (jgslott@aol.com)

Men's Lunch Devotional

2nd & 4th Mondays, 11:30am-12:30pm

\*Meets at Paradise Café (6150 Poplar Ave, #120)

\*Studying *Mornings with Bonhoeffer: 100 Reflections on the Christian Life* by Donald McKim

Contact: Anthony Duke (Anthony.Duke@ipaper.com)

Women's Book Group

3rd Mondays, 6:30pm, Church Library

\*For March reading *Embracing the Uncertain: 40 Devotions for Unsteady Times* by Magrey deVega

(Each book will be discussed in its entirety at the meeting.)

Contact: Beth Willingham (bethwillingham@comcast.net)

### Tuesday

Presbyterian Women (PW)

1st Tuesdays; 10:00am or 7:00pm; Bible Study Circles, multiple classrooms

3rd Tuesdays; 10:00am; Gathering, Warren Fellowship Hall

Contact: Sue Perrin (sue.perrin@att.net)

### Wednesday

Compass meal and programs (see page 16)

### Thursday

Thursday Bible Study

2nd & 4th Thursdays, 9:30am-10:30am, Church Library

\*Studying the book of James using the NT Wright for Everyone Bible Study Guides

Contact: Jean Carroll (jeancarroll1@comcast.net)

### Friday

Men's Breakfast

Fridays, 6:30am-7:30am, Warren Fellowship Hall, \$3 breakfast

\*Using the lectionary to study Scripture

Contact: Jim Boyd (jboyd10@comcast.net)

# CONGREGATIONAL LIFE

## Strategic Planning for GPC's Future



On Saturday, February 1, GPC officers and program staff gathered in Warren Fellowship Hall to revisit the 2014 Strategic Plan for Ministry. Led by outside facilitator Bob Wil-lumsen, the group discussed a new strategic plan for GPC. Over the next two months, committees will be working on follow-up questions that will be combined into a new strategic plan for GPC by the Ad Hoc Strategic Visioning Committee.

## Lenten Compass Series

*Contributed by George Barnes*

Using the book The Walk by Adam Hamilton Rev. Susan Carter Wiggins will be leading a Lenten series at Compass on Wednesday nights. A copy of the book is available for check-out from the library, but you don't need the book to participate.

March 4 – Study: The Importance of Listening and Paying Attention (Psalm 19)

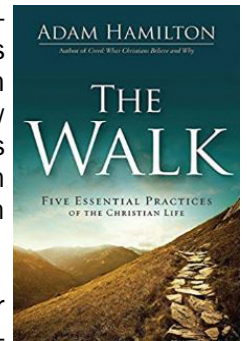
March 11 – Serve: Here I Am, Lord, Send Me (Romans 12:1-2, Luke 10:25-37)

March 18 – Spring Break - no meeting

March 25 – Share: Going Fishing, Reflecting Light (Matthew 5:13-15)

April 1 – The Five Practices of the Cross (John 19 & 20)

Pastor Susie will lead GPC in focusing on the essential spiritual practices that are rooted in Jesus' own walk with God and taught throughout the New Testament. Each of these practices is part of a daily walk with Christ and an essential part of growing together in the church.



Compass programs begin with supper at 5:30pm (\$7 per person and reservations REQUIRED). The programs run from 6:15-7:00pm and are presented in Warren Fellowship Hall. Please make reservations for supper EACH week, either by signing the friendship pad in church or by calling the church office (901-754-5195) before noon on the Monday before.

## April Compass

April 8  
NO COMPASS: Holy week

April 9 - Maundy Thursday  
5:30pm - Supper served in Warren Hall  
6:30pm - Maundy Thursday Worship Service in sanctuary

April 15  
Presenter: Roscoe Phillips  
Subject: "Bible Jeopardy"

April 22  
The Ramblers musical quartet

April 29  
END OF COMPASS SESSIONS for  
winter/spring 2020



## Special Attraction



GPC's Chuck Utterback and his musical quartet "The Ramblers" will entertain us on Wednesday eve at 6:15pm on April 22 in Warren Fellowship Hall. Please come for supper at 5:30pm and enjoy "a grand night for singing" with great instrumentalists and vocal harmonies in good ole gospel and country music fashion.



# CONGREGATIONAL LIFE

## ONLINE BIBLE STUDY CONTINUES THROUGH MARCH



Though this Bible study has already begun, everyone is invited to join this group on an ongoing basis or just drop in as you can. The March dates are listed below.

When: Wednesday nights from 8:00-8:45pm led by Rev. Will Jones.

What: Video-Conferencing Bible Study on Matthew.

Material: *Knowing the Bible: Matthew* by Drew Hunter.

Mar 4 Matthew 21-23; chp 9: Jerusalem Condemned for Rejecting the Messiah

Mar 11 Off - No Meeting - Spring Break

Mar 18 Matthew 24-25; chp 10: Jerusalem's Impending Judgment & the End

Mar 25 Matthew 26-28; chps 11-12 The Crucifixion, Resurrection, & Commission; Summary & Conclusion

## MEN AT GPC

### *Men's Breakfast*

Men's Breakfast meets Friday mornings at 6:30am in Warren Fellowship Hall (with occasional exceptions for holidays). Breakfast starts at 6:30am (bring \$3) and Bible study at 7:00. Different men lead each week's study using Scripture from the lectionary. Come one, come all!



### *Men's Lunch Devotions*

All men are invited to come as you can on the 2nd and 4th Mondays of the month, 11:30am-12:30pm at the Paradise Café (6150 Poplar Ave #120). Part of GPC's Men's Ministry, the contact person for

this bimonthly lunch study is Anthony Duke (Anthony.Duke@ipaper.com). Currently the group is going through Mornings with Bonhoeffer: 100 Reflections on the Christian Life by Donald McKim.



## WOMEN AT GPC

### *Presbyterian Women in March*

Individual Circle Bible study meetings will be on Tuesday, March 3 at 10:00am. We will be studying Lesson 7 in the Horizon Bible study - Love Carved in Stone. Circle 1 - Rm UL-215, Circle 2 - Rm UL-216, Circle 3 - Rm UL-217, and the Night Bible Study Circle will meet at 7:00pm in the church parlor.

Threads of Love will meet Tuesday, March 10 from 9:30am-12:00pm in the sewing room on the first floor of Evans Chapel. Anyone who is interested is invited to attend. Sewing is not required as we also need people to cut and press. If you have any questions, please contact Mary Ann Harris at mah174@yahoo.com.

Our March Gathering will be Tuesday, March 17 at 10:00am in Warren Fellowship Hall. Linda Pennington from Dietitian Associates, Inc will be our speaker. She will give us general nutrition tips, ideas about how to eat when you have little time to cook, recipe makeovers, and she will also discuss weight management.



Linda Pennington received her BS in Home Economics with a Food and Nutrition Option from Mississippi State University and her MS in Nutrition from Texas Woman's University in Houston. Linda is Vice President and co-owner of Dietitian Associates, Inc. and is lead clinical specialist for patient services. Previously, Linda's served as Chief Clinical

Dietitian for Methodist Hospital - Germantown, Clinical Dietitian at The MED, and Adjunct Faculty to the University of Memphis and Shelby State Community College.

Linda is currently a member of the Legislative and Public Policy Committee, a national appointment for the Academy of Nutrition and Dietetics.

The March items for Project Outreach are canned pasta and lunch snacks. All members are invited to contribute to this worthy cause - helping to feed those in Fayette County who are in need. Bins are located in the Activity Center.

If you have any questions, please contact Sue Perrin at Sue.perrin@att.net.

# CONGREGATIONAL LIFE

## WELCOME, NEW MEMBERS



Sarah Cannon & Adam Pflugrath  
1785 Lindell Cv  
Germantown, TN 38139



Kriste & Kevin Cullum  
8285 Park Ridge Dr  
Germantown, TN 38138



Kathy & Steve Davis  
209 Kendall Grove Cv  
Collierville, TN 38017



Jennifer & Michael Goodin  
2760 Holly Spring Dr  
Germantown, TN 38138



Jenny Overbey  
760 Great Oaks Rd  
Eads, TN 38028-3638



Kim Ramos & Wes Robinson  
3132 St. Regis Cv  
Memphis, TN 38119



Susie & Jim Robinson  
3132 St. Regis Cv  
Memphis, TN 38119

To Our GPC Family,

Carol and I deeply appreciate and thank all who offered voiced and written condolences on the passing of my dear sister Marilyn. It was comforting to know of your concern and caring thoughts.

Blessings and Shalom,

George Barnes



# CONGREGATIONAL LIFE

## EASTER EGG HUNT

Join the children of the church for an afternoon of Easter fun on Palm Sunday, April 5. The Congregational Life Committee is hosting the **annual children's Easter Egg Hunt**, beginning at 3:30pm. Following the hunt, a petting zoo will be set up so children can experience petting and feeding the animals. For questions, you may email Susan Lipscomb at [slipscomb6@gmail.com](mailto:slipscomb6@gmail.com). The community is invited, so be sure to invite neighbors, friends, and family.



**We need the congregation's help to gather enough candy.** Please bring individual sized, wrapped candy (no chocolate please) to the Activity Center lobby by Sunday, March 29. Remember, the candy has to be small enough to fit in a plastic egg. If you are interested in volunteering with this event, please contact Susan Lipscomb at [slipscomb6@gmail.com](mailto:slipscomb6@gmail.com).

**Save the Dates!**  
**NaCoMe Churchwide Weekend Retreat**  
**May 15-17**  
**Contact: Brooke Duke**  
**([brookebduke@yahoo.com](mailto:brookebduke@yahoo.com))**



At Eastertide, it is a tradition to decorate the church with Easter lilies given in memory or honor of loved ones. If you would like to take part in this tradition, please fill out an envelope located in the pew racks, the narthex, the AC lobby, and the Welcome Center and put it in the offering plate or return it to the church office by Monday, April 6. Donations in any amount are welcome. Please write *Easter Flowers* in the check memo line.

# SPECIAL NEEDS MINISTRY

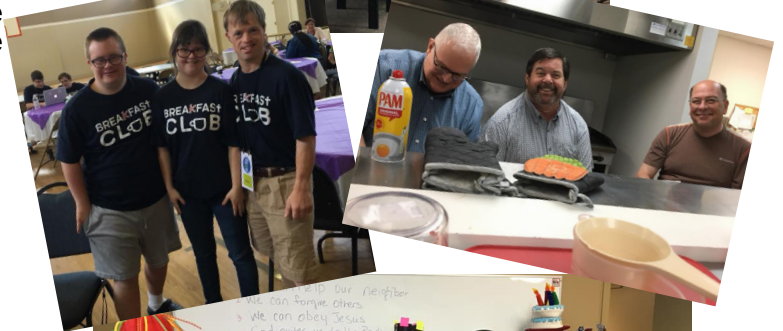
## Making Much of Ministry

*By Monica Kirby*

Ministry does not happen in a vacuum nor can any one individual successfully plan, orchestrate, and implement any one ministry of a church. For a ministry within the walls of a church to be truly successful it needs the “buy in” from the entire family of faith. In 2014, with the help of an outside consulting firm, GPC wrote a strategic vision plan for ministry. (To view the plan visit the church’s website and click on “Welcome.” From the drop down menu select “About GPC” and then scroll to the bottom of the page where you will find a clickable button for “GPC Strategic Plan for Ministry.”) GPC chose six areas they wanted to address: hospitality, mentoring, school partnerships, ministry to people with special needs, communications, and technology road mapping.

Well, it is five years later and the family of faith at GPC has been doing an outstanding job! Especially in the arena of “ministry to people with special needs!” Just look at all you have been able to accomplish! With consideration to space and funding you have grown a small Sunday School program into a ministry that has programming three days a week! Your summer program is highly sought after, your “lunch and learn” series on Wednesdays has proven to be highly successful, and there is not another program in the greater Memphis area like your AMPlify music program!

The language of the strategic plan is filled with “we” and “our” – possessive nouns of ownership - for bringing the plan to fruition. We said, “We will embrace the special needs community as if we were embracing Jesus Himself.” And you have done an excellent job! Now it is time to celebrate! March 22 will be “Special Needs Emphasis Sunday” here at GPC as we take a look at all God has accomplished through your obedience. Please plan to be a part of the 11:00am worship service hour that morning and see for yourself how this vision has unfolded.



### Friday, April 17

231 special need participants have registered for this year’s Memphis Joy Prom! Now we need volunteers to make the night a true success! Please visit <https://www.christchurchmemphis.org/memphisjoyprom> to register as a volunteer. We cannot do this without your help! Need more information? Talk to Monica, our Special Needs Ministry Director ([monicak@germantownpres.org](mailto:monicak@germantownpres.org)), for the inside scoop!



# YOUTH MINISTRY

Hi Friends,

We had a great time at the Pinecrest Youth Retreat. Our theme this year was "Do You Want a Revolution?" exploring how Jesus turns the world upside down. God showed up in worship, recreation, and small group time. Eighteen junior and senior high youth went on the retreat. The youth enjoyed illustrating Scripture as movie posters, spending time in fellowship, and worshipping with each other.

We are continuing to study God's Word in Sunday School and the youth are enjoying growing in their faith. The junior high youth will be studying the life of Jesus in the gospels. The confirmation class is getting confirmed on Sunday, March 1. The senior high youth will be exploring who do we say Jesus is.

Sign-ups for the junior high mission trip and the senior high mission trip are active on the GPC website. Deposits for summer trips are due Wednesday, March 11! Please register if you are planning to go on these fun trips!

March dates:

March 1 - Confirmation Sunday and Youth Auction in the AC at 6pm

March 4 - Compass, 6-7pm

March 8 - Jr. and Sr. High go see Disney/Pixar's *Onward*

March 11 - Compass, 6-7pm

March 15 - No Youth Group, Spring Break

March 18 - No Compass

March 22 - Youth Group at GPC, Jr. High 4:30-6:30pm, Sr. High 6-8pm

March 25 - Compass, 6-7pm

March 29 - Youth Worship Service in the chapel, dinner at 5:15pm in Warren Hall, worship 6-7pm

Save the Date for Youth Sunday - April 26 at 8:30am and 11am

- Pastor Amanda

[amandam@germantownpres.org](mailto:amandam@germantownpres.org)



# IN OUR PRAYERS

## In the Congregation:

- |                        |                          |                    |                        |                                                  |
|------------------------|--------------------------|--------------------|------------------------|--------------------------------------------------|
| >Gay Beaumont          | **Jean & Gil Brooks      | >Jean & Bob Hicks  | >Erin & Thomas Powell  | >Amanda Walters                                  |
| >Shirley Billups       | >Judy & Fred Frick       | >Dot Ledlow        | >Jackie & Bill Ruleman | >Woodie Whited, Johnathan Whited, & Sandy Franks |
| >Sherril & Jim Blair   | >Susan & Michael Gyura   | >Aggie & Jack Losa | **Pam & Bill Spencer   |                                                  |
| **Linda Sue & Bob Bobo | >Nancy & Peter Hawkinson | >Willa Lowry       | >Jan Thomson           |                                                  |
| >Huddy & Bayard Boyle  |                          | >Debbie Moseley    |                        |                                                  |
|                        |                          | >Mack Pepper       |                        |                                                  |

The congregation extends its love, sympathy, and prayers to:  
 George Barnes in the death of his sister;  
 the family of Boyd Maize in his death;  
 Barb Poier & family in the death of her daughter.

## In Service in the Military:

Sidney Baker - niece of Kay & Joe Donaho  
 Kyle Bishop - grandson of Brenda Bishop  
 Trip Hiller - grandson of Anne & Wayne Tansil  
 Johnny Nowell - son of Jo & Adm. John Nowell  
 Patrick Peak - son of Eleanor Denton  
 Jason Ragain - son of Debbie Ragain

## From Room in the Inn Ministry

Updated with February Guests: Alexis, Angela, Beverley, Brittany, Debra, Ebonie, Hurlean, Jasmine, Kathy, Mariam, Quinanna, Terry, Valene, and Virginia

## Homeless from GPC Staff

Ezekial, Kenny, Marvin, Stan, Tyler

## GPC Friends & Family Prayer Ministry

- |                                                       |                                                                             |                                                                                                                 |                                                                               |
|-------------------------------------------------------|-----------------------------------------------------------------------------|-----------------------------------------------------------------------------------------------------------------|-------------------------------------------------------------------------------|
| >Frances Blackwell - grandmother of Anna White        | >Susan Hawkins - daughter of Ann Phillips                                   | >LaLisa Lindemann - daughter of Dot Ledlow                                                                      | >William Steven, son of Hayley Steven - friend of Susan Shirley Hurt          |
| >Julie Bland - daughter of Mary & Rodney Strop        | >Roy Hill - brother of Walter Hill                                          | **Cindy & Scott Moore, daughters Isabelle & Lucy - daughter, son-in-law, & granddaughters of Elaine & Tom Cates | >Kila Tripp - daughter of Cindy & Rick Tripp                                  |
| >Elaine Brown - mother of Cheri Howle                 | **Bibba Holland - friend of Phyl Simmons                                    | >Hilliard Morgan - brother of Greg Morgan                                                                       | >Dick Vosburg - friend of Margaret Owens                                      |
| >Janet & John Clark & family - friends of Mary Rogers | >John Howle - son of Cheri & Mike Howle                                     | >Rev. Philomena Ofori-Naaph - sister/friend/colleague of Pastor Susie                                           | >Diane Young, daughter Jennifer - friends of Laura & Woodson Farmer, Emmaline |
| **Elaine Colmer - mother of John Colmer               | **Ren Hua (& mother & stepfather, caregivers) - grandmother of Tingting Yao | >Jane Stearns - sister-in-law of Diane Stearns                                                                  |                                                                               |
| **Nancy Dillon - aunt of Alex Benford                 | >Debbie Jensen - cousin of Jeanie Hill                                      |                                                                                                                 |                                                                               |
| >Pat Fox - mother of friend of Sherrie Horner         |                                                                             |                                                                                                                 |                                                                               |

**\*\*Indicates new request added since last month.**

Friends and family requests submitted to the office for prayer will remain for 30 days before being removed. If you notice someone you requested prayer for is no longer on the list, simply notify the office, and they will be placed back on the list.

## March GPC Family Prayer Ministry

- |                                                                                                                                                                                                                              |                                                                                                                                                                                                              |                                                                                                                                                                                                                                       |                                                                                                                                                                                                                                       |                                                                                                                                                                                                                                            |
|------------------------------------------------------------------------------------------------------------------------------------------------------------------------------------------------------------------------------|--------------------------------------------------------------------------------------------------------------------------------------------------------------------------------------------------------------|---------------------------------------------------------------------------------------------------------------------------------------------------------------------------------------------------------------------------------------|---------------------------------------------------------------------------------------------------------------------------------------------------------------------------------------------------------------------------------------|--------------------------------------------------------------------------------------------------------------------------------------------------------------------------------------------------------------------------------------------|
| <b>Mar 1</b><br>Vicki & Drew Arthur, Madison, Ryan<br>Tommie Faye Coffman<br>John Goodyear<br>Alice & Jimmy Kiser<br>Dot Ledlow<br>Evelyn & Phil Mosley<br>April & Patrick Rice, Catherine, John<br>Trey & Amy Thomas, Robby | <b>Mar 8</b><br>Mary Barth<br>Alma Crone<br>Michael & Mallory Trenor Kenney, Mason<br>Catherine King<br>Janet & Don McCrory<br>Mickie & Steve Nabers<br>Renee & Carlin Stuart, Ginger<br>Ginger & Billy Wise | <b>Mar 15</b><br>Jill Cox<br>Missy & Paul Gwin, Cole<br>Sue Kelley<br>Melissa & Alex Ivy<br>Diane & Edward Newton<br>Ashley & David Robinson, Anne-Louise, Charlotte, Tyler<br>Jan Thomson<br>Merrill & Reut Wise, Grant, Laura Grace | <b>Mar 22</b><br>Carol & George Barnes<br>Michelle & Reed Brasfield, Lily<br>Polly & Rob Cotten, Bo, McKenzie<br>Dianne & Thomas King<br>Leslie Murray<br>Cheryl & Gary Riedel<br>Mary Lee Toler<br>Elizabeth & Jerry Wilson, Madison | <b>Mar 29</b><br>Lauren & Myles Beaupre, Emmy, Ruby<br>Kay & David Collins<br>Lori & Chris Harding, Jackson, Katherine<br>Jeffrey Harding<br>Kim Michelson<br>Jo Robinson<br>Tracey & Rush Smith, Grey & Susie<br>Jay Chandler, Anna, Will |
|------------------------------------------------------------------------------------------------------------------------------------------------------------------------------------------------------------------------------|--------------------------------------------------------------------------------------------------------------------------------------------------------------------------------------------------------------|---------------------------------------------------------------------------------------------------------------------------------------------------------------------------------------------------------------------------------------|---------------------------------------------------------------------------------------------------------------------------------------------------------------------------------------------------------------------------------------|--------------------------------------------------------------------------------------------------------------------------------------------------------------------------------------------------------------------------------------------|

# MEMORIALS

During the month of January GPC received the following honorarium and memorial gifts.

<b>Memorial Fund</b>	Audrey & Rick Landrum	<i>In Memory of Carolyn Hayward</i>
<i>In Memory of Suzanne Bowlin</i>	Carol & Bill Leppert	Geneva Adams
Jeff Bowlin	Sissy & George Lofton	<i>In Memory of Roy Hendrix</i>
Joyce & Gordan Cochran	Cynthia & Jim Maddox	Nancy Webb
Leslie & David Cuicchi	Sammy Ann Marshall	<i>In Memory of Richard Krewson</i>
Nancy Daevel	Anne & George McGaha	Bonnie Algee
Carolyn Eggleston	Snowden & Henry Morgan	<i>In Memory of Emily McAllister</i>
Dixie & Bob Johnson	Mr. & Ms. Thomas Morrow	Geneva Adams
Audrey & Rick Landrum	Barb Poier	<i>In Memory of Bobby Lanier</i>
Sammy Ann Marshall	Phil, Sara, Katie, & Sam Reese	Geneva Adams
Pegasus of Germantown	Lisa Ruckert	Ann Harbor
John Shanks	Linda & Bill Shirley	Mickie & Steve Nabers
<i>In Memory of Roy Hendrix</i>	Becky Stanley	Alta & Jim Simpson
Kay & David Collins	Mary Lee Toler	Nancy Webb
Elizabeth Houston	Peggy Whitaker	Judith & Tom Wilson
	Walter Wills	
<i>In Memory of Bobby Lanier</i>	<i>In Memory of Jimmy R. Phillips, Sr.</i>	
The Clark Family & Friends at	Angielyn Phillips	<i>In Memory of Scott Ruleman</i>
Shadowlawn Greenhouses		Geneva Adams
Margie Armour	<i>In Memory of Scott Ruleman</i>	Geneva Adams
Carol & George Barnes	Geneva Adams	<i>In Memory of Fred Stearns</i>
Wanda & John Barzizza	Betty & Dick Allen	Geneva Adams
Linda Sue & Bob Bobo	Carol & George Barnes	<i>In Memory of Patti Tracey</i>
Beth & Bill Boyle	Betty & Clifford Green	Bonnie Algee
Paul Boyle	Anne & George McGaha	<i>In Memory of George Walters</i>
Huddy & Bayard Boyle	Mr. & Ms. Robert Sayle	Geneva Adams
Lea & Eric Buring &	Becky Stanley	<i>In Memory of Pat Whitaker</i>
Ollie & Dina Ciabattini	Wanda & Hank Vallin	Geneva Adams
Tempe & Jimmy Chancellor	Peggy Whitaker	
Leslie & David Cuicchi	<i>In Memory of Irvin Schatz</i>	
Patricia Davis	Joyce & Gordan Cochran	
Linda & Gerald Gardino	Dr. Charles Elliott	
Julia & Bill Gibbons	P. N. Ledbetter	
Marylon Glass	<i>In Memory of Patti Tracey</i>	<b>Pastor's Discretionary Fund</b>
Kermit & Omra Lanier Gohring	Barb Poier	<i>In Memory of Bobby Lanier</i>
Betsy & Al Gumpert		Kay & David Collins
Tamah & Jeff Halfacre		
Jean & Water Hill		
Samuel Hollis, Sr.		
Lorri & Robbie Hughes		
Dixie & Bob Johnson		
Judy Jones		
Dianne & Tom King		
	<b>Music Fund</b>	<b>In Support of Mission Trips</b>
	<i>In Memory of Mary Boyle</i>	<i>In Memory of Roy Hendrix</i>
	Geneva Adams	Kay & David Collins

## GPC Financial Summary, January 2020

	Jan. 2020	Jan 2019
Revenue	\$ 306,670	\$ 199,713
Expenses	\$ 160,303	\$ 181,928
Net	\$ 146,367	\$ 17,785

GERMANTOWN PRESBYTERIAN CHURCH  
2363 S GERMANTOWN RD  
GERMANTOWN TN 38138

PH: 901/754-5195  
FX: 901/754-6961

WWW.GERMANTOWNPRES.ORG

WORSHIP TIMES:  
8:30AM WORSHIP  
9:30AM SUNDAY SCHOOL  
11:00AM WORSHIP

OFFICE HOURS:  
8:00AM-5:00PM  
MONDAY-FRIDAY

WILLIAM G. JONES  
PASTOR

SUSAN CARTER WIGGINS  
ASSOCIATE PASTOR FOR  
CONGREGATIONAL CARE

AMANDA MACKEY  
ASSOCIATE PASTOR OF YOUTH MINISTRY

TOM SAUER  
PASTOR TO SENIOR ADULTS

JEROLD TEACHEY  
DIRECTOR OF MUSIC MINISTRY

ALEX BENFORD  
ORGANIST/HANDBELL DIRECTOR

ANNA WHITE  
DIRECTOR OF CHILDREN'S MINISTRY

MONICA KIRBY  
DIRECTOR OF SPECIAL NEEDS MINISTRY

**April Window Deadline: Ides of March**

**The APNC Congregational Survey is now available.  
Fill out the survey and let the Associate Pastor Nominating Committee  
know what you think. This is your chance to participate in the  
process of finding the next staff member.**

**You can take the survey online by following this link:  
<https://www.surveymonkey.com/r/GPCNewAssociatePastorSurvey>.  
Or you can fill out a paper survey and return it to the office. If you need a  
paper survey, contact the church office at [office@germantownpres.org](mailto:office@germantownpres.org).**



VISIT  
GERMANTOWN PRESBYTERIAN CHURCH  
ONLINE AT  
[WWW.GERMANTOWNPRES.ORG](http://WWW.GERMANTOWNPRES.ORG)



LIKE US!  
[FACEBOOK.COM/  
GERMANTOWNPRES](https://www.facebook.com/germantownpres)



CHAT WITH US ON TWITTER!  
[@GERMANTOWNPRES](https://twitter.com/germantownpres)  
[@GPTNYOUTH](https://twitter.com/gptnyouth)  
[@WILLGRAYJONES](https://twitter.com/willgrayjones)