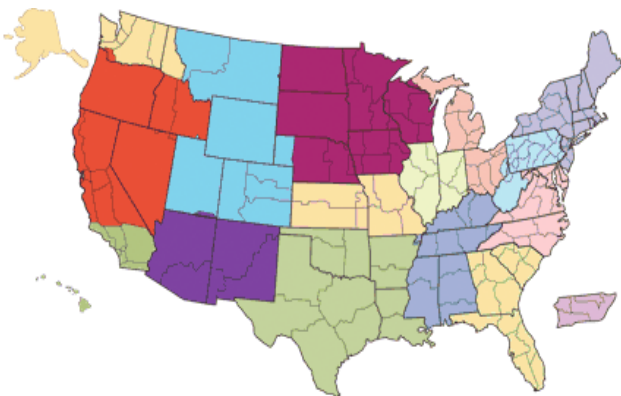
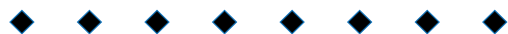


Per Capita has been part of our funding history for over 275 years. "Per Capita is an opportunity for all communicant members of the Presbyterian Church through the (Councils) to participate equally, responsibly, and interdependently by sharing the cost of coordination and evaluation of mission; and performing ecclesiastical, legislative, and judicial functions that identify a Reformed Church, while the same time strengthening the sense of community among all Presbyterians.



Per Capita is crucial to the overall health and well-being of the PC (USA), not only because it provides for our ministries, but because it binds presbyteries, synods, and congregations together in one Church." (J. Herbert Nelson II, Stated Clerk of the General Assembly)



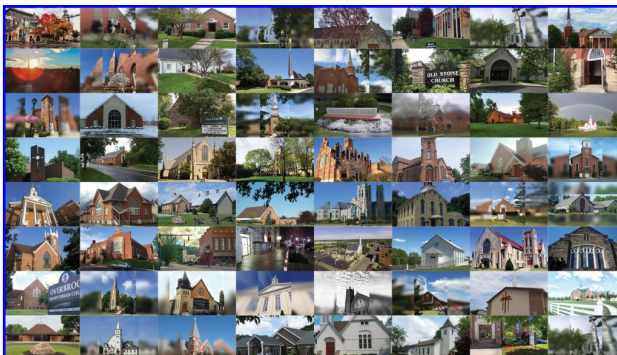
The Presbytery of Scioto Valley
614-847-0565
Website: www.psvonline.org

(Updated 12.1.2021)

The Presbytery of Scioto Valley
Mission and Vision Statement

**"Inspire, Strengthen,
And Challenge Congregations
For Christ's Mission"**

February 18, 2020



Per Capita...\$40.00 Per Member

The Presbytery approved \$40.00 Per Capita for 2022. The 2022 Per Capita is based on the congregations' reported membership for December 31, 2020.

Per Capita for 2022 is made up of:

- Presbytery of Scioto Valley - \$27.80
- Synod of the Covenant - \$3.25
- General Assembly - \$8.95

Congregational Mission Giving

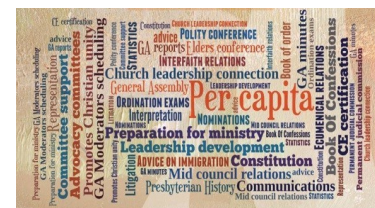
Congregations annually pledge mission dollars to support mission ministries in the presbytery and throughout the denomination. Each unrestricted dollar given will be divided:

- Scioto Valley Presbytery 67%
- General Assembly (PCUSA) 32%
- Synod of the Covenant 1%



THE PRESBYTERY OF SCIOTO VALLEY

Per Capita & Mission Giving
It is how Presbyterians come together
to discern God's call in their lives.



Per Capita is the way we Presbyterians financially support the connectedness of 9,161 (2018

figures) congregations, worshipping communities and mid-councils in the Presbyterian Church (USA). It allows church members to participate in the work of the wider church. Per Capita binds us in a covenant relationship and allows the whole church to share equitably in those things that make us Presbyterian.

Mission Giving

provides financial support for

mission ministries locally and across the denomination. Shared mission giving makes a difference in mission support beyond the congregation. Your congregations' annual pledge of shared mission dollars gives life to mission projects and ministries in the Presbytery and into communities beyond its boundaries.



Per Capita

History of Per Capita...

Per Capita, which began in 1734, is part of the glue that holds Presbyterians together by supporting various ministries throughout the church. Per Capita is based on a portion of certain salaries and administrative expenses which are part of the operating expenses of the Presbytery, the Synod and General Assembly. Per Capita supports our system of councils that allows ruling elders and teaching elders to discern the mind of Christ, work together for full participation in decision-making which furthers the witness and mission of Jesus Christ in the world. Per capita is a form of stewardship at the presbytery, synod, and General Assembly levels allowing us to use our gifts, talents, and resources to support and promote the ministries and missions of the wider church.

Per Capita in Scioto Valley supports the cost of operating the presbytery office, administrative expenses, legislative and judicial functions, and serving the congregations through committees and commissions.



To fulfill our Per Capita obligations with the Presbyterian Church (U.S.A.) the Presbytery of Scioto Valley funds 100% of the Per Capita owed to General Assembly, even the deficit of what congregations do not submit.

Congregational Giving

Why pay Per Capita and support Mission?

Per Capita contributions fund the shared governing responsibilities for the whole church.

- ◆ Our theological identity & connections.
- ◆ Our system of mid councils which allows elders and ministers to discern the mind of Christ.
- ◆ Helps congregation with pastoral transitions, trains, supports and cares for pastors.
- ◆ Our ecumenical connections that make us part of the church universal.
- ◆ Our core structures that keep us together as a church.
- ◆ Our call to work for full participation in decision-making.
- ◆ Our call to further the mission of Jesus Christ in and for the world.

Per Capita and Mission giving are the ways all Presbyterians share costs that belong to the whole church, support administrative and mission ministries, and give meaning to the interdependent nature of being Presbyterian.

Through the financial commitment, support and generous giving of our congregations, the presbytery, synod and general assembly can make a difference in the world.

The Westminster Confession says, "all believers, are therefore, under obligation to sustain the ordinances of the Christian religion where they are already established, and to contribute by their prayers, gifts, and personal efforts to the extension of the Kingdom of God throughout the whole earth." (6.058)

Mission Support

Mission Giving Supports Projects Near and Far...

Campus Ministry, Mission Work Trips, Session-endorsed Grants, Older Adult Ministry, Youth Ministries (Fall Rally, Winter Retreat, Triennium), Leadership Training (Partners in Education (PIE), Christian Education, Church Professionals Retreat, Gatherings throughout the Presbytery, Pastor Support, Resource Materials, Congregational Support, Inquirer and Candidate for Ministry Support, New Worshipping Communities.



Mission Partnerships, Mission Co-Workers, Global Mission Projects, Evangelism, Disaster Recovery, Ministries of Reconciliation.



Poverty Needs, New Church Development, Church Transformation, and New Worshipping Communities.