



# Presbytery of Transylvania

**God calls Transylvania Presbytery to support and encourage the mission of God in the particular context of the congregations and communities in which we have been called to serve as the body of Christ. Recognizing that we are a body of diverse members connected by our common bond in Jesus Christ, and empowered by the Holy Spirit, we strive to work together to...**





- **WITNESS** to the love of the triune God by what we say and do;
- **NURTURE** all who are called to follow Christ, and
- **SERVE** all people impartially, recognizing that all we have and all we are belongs to God.



# Transylvania Presbytery is:

- Where the Spirit unites us “across the woods” (English translation for the Latin Transylvania)
- At the heart of the history of Kentucky Presbyterianism
- 76 Congregations scattered over 56 counties in Central and Eastern Kentucky, each made stronger through our connection with one another
- Diversity and beauty of the Bluegrass and the Mountains





The Presbytery budget is supported by two main sources of income:

- Per-Capita Assessments
- Unified Mission Giving



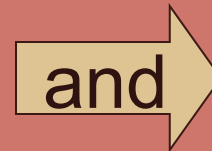
Together, Per Capita  
and Unified Mission  
Giving make up 66% of  
the Presbytery's total  
operating revenue each  
year.



Additional income comes through:

 Interest on Investments

 Dividends from 412 Rose Street Investment





 Designated Giving

 Designated Investments



# What is Per Capita?

Per capita is an opportunity for all communicant members of the Presbyterian church through the governing bodies to participate:

Equally  
Responsibly  
Independently



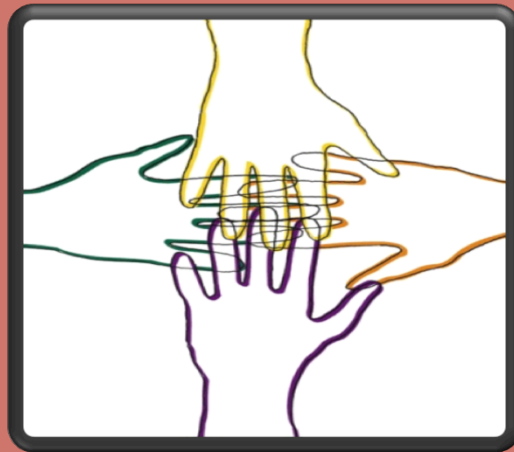
The payment of the per capita  
apportionment can be seen  
as a sign of healthy relationships  
within the church, giving  
tangible witness to the unity and  
wholeness promised to us  
in Jesus Christ.





# Who Pays Per Capita?

Congregations pay an annual amount of money per church member — per capita apportionment — to their respective presbyteries.



# Why does the per capita rate differ among presbyteries?

Each presbytery begins with the General Assembly per capita rate and adds the amount needed to support its specific mission and administrative functions.



**2018 BREAKDOWN OF  
PER CAPITA APPORTIONMENT FOR  
TRANSYLVANIA PRESBYTERY**

**Presbytery \$25.51**

**Synod \$3.62**

**GA \$7.73**

**Total \$36.86**





- \$7.73 per member is forwarded to our national church office
- \$3.62 per member is forwarded to our Synod
- \$25.51 per member stays in Transylvania Presbytery



The assessment is based upon the membership of each church, determined from the statistical report submitted by the church in the previous year.



For example, the 2018 per capita is based on the membership reported on the 2016 Annual Statistical Reports.





Our Presbytery contributes  
the appropriate amount to the  
national church and the  
synod, regardless of the  
existence of or timing of  
payments from member  
churches.



The per capita assessment is not used to fund mission programs on the national, synod or presbytery level. It exists solely to assist in the payment of the basic necessities of our institutional existence.



The concept underlying the per capita assessment is that every Presbyterian should fairly participate at the same level to allay these very fundamental and unavoidable expenses.



What do your Per  
Capita Dollars  
Buy?





Within the Presbytery, Per Capita dollars pay for the cost of :

- Presbytery operations
- Administrative personnel
- Presbytery meetings
- Permanent and special committees of the Presbytery
- The Office of the Stated Clerk
- The Coordinating Commission



On the Synod and General Assembly Level, Per Capita dollars pay for the same kinds of office and administrative expenses, plus:

- The Church Leadership Connection, which assists local Pulpit Nominating Committees in the matching of pastors and churches.



# What About Unified Mission Giving?



What is Unified Mission Giving?

AND

What do these dollars buy?





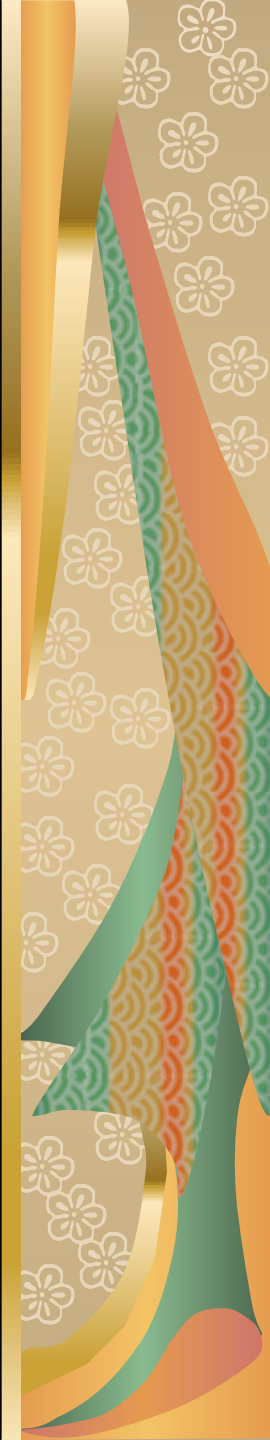
# Our Unified Mission Dollars Support

- missionary salaries and benefits
- gifts or grants to ecumenical agencies
- overseas partners [churches, hospitals, schools]
- dollars to provide for resources and services to congregations and mission governing bodies.



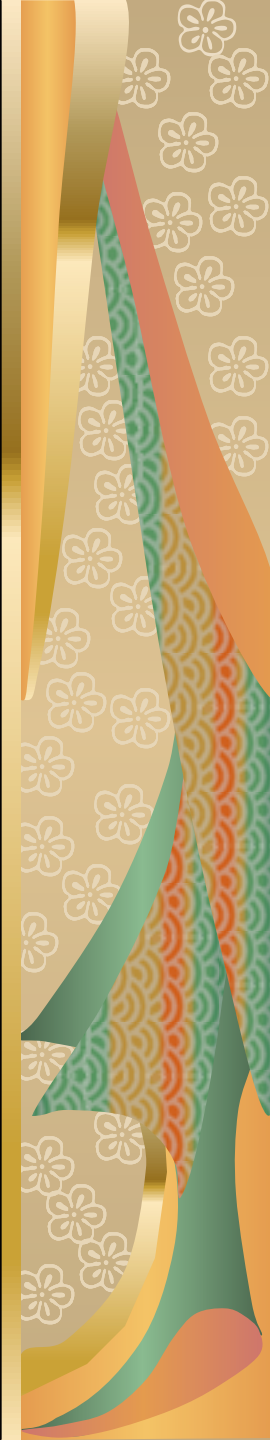
# With So Much Local Need, Why Should We Send Money Out of the Neighborhood?

- In Matthew 25 Jesus talks about “the least of these who are member of my family” and how our loving care of them is our care of Christ Himself.



# With So Much Local Need, Why Should We Send Money Out of the Neighborhood?

- In The Great Commission we are sent to make disciples “of all nations.”
- Our mission is both local and universal.



# So what happens to the unified mission giving sent to the Presbytery?

- 78% is kept in the Presbytery
- 17% is sent to GA
- 5% is sent to the Synod

These percentages are set by action of Presbytery each year at the last presbytery meeting of the year.





The unified mission contributions from our congregations fund the following programs in the presbytery:



# The Mission Ministry and it's Programs

- Church Development,  
Transformational and  
Evangelism Grants for  
Congregations
- Mission Interpretation  
Programs



■ Leadership Development through various retreats and conferences

■ Congregational Support (Mission Studies, Strategic Planning, Spiritual Formation)

■ Mission Grants to Congregations

■ Peacemaking Grants to Congregations



In 2017, the Presbytery was able to award hunger and peacemaking grants to the following projects in our congregations:

Ashland (Backpack Ministry)  
(Ashland Area Presbyterian Ministries)

Chapel Hill (Gainesway Homework Huddle)

Danville (Grace Café)

Ezel (Loaves and Fishes)





Georgetown (Amen House)  
(Summer Reading)

Isom (Backpack Ministry)

London (Food Pantry)

Midway (Backpack Ministry)

Second-Lexington (Canaan House)  
(A Cup of Joe)  
(Westminster Village)  
(Nonviolence Initiative)

Versailles (Backpack Ministry)

Wilmore (Clean Cupboard)



# Burnamwood Camp & Conference Center





# Youth Triennium and Scholarships



# Kentucky Council of Churches



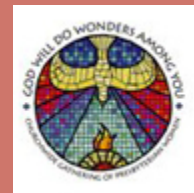
# Campus Ministry in the Presbytery



# Presbyterian Women



All  
Women  
in the church





# Beyond the Budget

Presbytery, Synod and  
General Assembly also  
act as the organizational  
structure to channel  
other mission dollars.



Individual Presbyterians and  
Congregations are anxious to  
respond to needs around the  
world through responsible helping  
agencies.



When there is a flood in  
Houston; a tornado in West  
Liberty or a hurricane in  
Puerto Rico— we want to help  
our sisters and brothers.



But where can we send our  
donations with the  
**CONFIDENCE** that the ones  
we want to help will be the  
beneficiaries of our support?





The Presbyterian Church – through our Presbytery, Synod and General Assembly structure, has a long and proud history of world-wide missional witness.





Very low administrative cost,  
and an established world-wide  
network of mission partners  
enables quick and effective  
response in emergencies, and  
continued care over years of  
rebuilding communities.





# PRESBYTERY OF TRANSYLVANIA

*Calling people to faith and service  
in the name of Jesus Christ.*

The same confidence and professionalism is provided as Transylvania Presbytery handles designated gifts within our region.

Gifts from the congregations to various Presbyterian causes are received by the presbytery and passed on monthly to the designated cause such as Buckhorn, Burnamwood, Living Waters for the World, Uspiritus, etc.



Burnamwood is a cause near to  
the heart of many in  
Transylvania.



# Unified Mission Giving Provides 45% of Burnamwood's Annual Budget:

Unified Mission Giving (from the Presbytery's operating budget) 45%

Camper Fees 20%

Camp Rentals 16%





19% of the revenue to operate Burnamwood each year comes from the generous designated gifts of congregations and individuals.



# Whether your gifts come through:

Per-Capita

Unified Missions

Designated Giving

Transylvania Presbytery works hard to insure that every dollar is put to use in service to Jesus Christ in our region, our nation, and around the world.



Everything we do together is made possible because of the gifts from congregations. We thank you for your generosity and commitment to our shared Presbyterian ministry. Our dollars were given to us by God.



# THANK YOU!

Your dollars are at work in Transylvania Presbytery in helping each congregation to be the best Presbyterian Church it can be by calling people to faith and service in the name of Jesus Christ.





[www.transypby.org](http://www.transypby.org)

You can DONATE NOW on the  
Presbytery's website:

<https://transypby.org/paypal/>

Or by check to:

Presbytery of Transylvania  
P.O. Box 23580  
Lexington, KY 40523





