

To: Teaching Elder and Ruling Elder Commissioners

Notice of Annual Meeting of the Presbytery of Transylvania

The Presbytery of Transylvania will meet virtually on Saturday, November 14, 2020. The meeting will include worship with virtual communion, elections, and other business.

The Presbytery convenes at 10:00 AM. Virtual registration opens at 9:00 AM.

If you are unable to attend, please request an excused absence from the Stated Clerk.

Email: statedclerk@transyby.org.

Pre-registration is required and can be found here:

<https://us02web.zoom.us/meeting/register/tZEIf-usqDwuEtyThfVRVXO6O4jiwrYJNYmy>

After registering, you will receive a confirmation email containing information about joining the meeting.

The docket and reports can be found here: <https://transyby.org/november-14-2020-presbytery-meeting/>

God's blessings to each one and see you (virtually!) soon.

The Rev. Jerry L. Utt, II
Stated Clerk

Presbytery of Transylvania
November 14, 2020 Annual Meeting
Zoom @ 10:00 a.m.
Docket

9:00 AM	Zoom Opens	
10:00 AM	Call to Order and Opening Prayer	Scott Cervas, Vice Moderator
	1. Declaration of Quorum	Jerry L. Utt, II, Stated Clerk
	2. Approval of Docket (all new business must be submitted at this time)	
	3. Introduction of First-Time Commissioners and Guests	
	4. Comings and Goings	Philip Lotspeich, Executive
	5. Worship	Scott Cervas and Linda Kurtz
	6. Consent Agenda	Stated Clerk
	a. Stated Clerk Report	
	b. Christian Formation Ministry (POINT)	
	c. Church Development and Revitalization Ministry	
	i. Nicholasville Steering Team	
	d. Congregational Issues Commission	
	e. Presbyterian Women	
	f. Board of Pensions	
	g. KCC Delegates' Report	
	h. Living Waters for the World	
	i. Pastoral Transitions Commission	
	Commission and Ministry Reports	
	7. Commission on Preparation for Ministry	Connie Turner
	a. Movement of Inquirer to Candidate	
	8. Leadership Development Ministry	Beth Garrod-Logsdon
	9. Coordinating Commission	Philip Lotspeich
	a. Burnamwood Update	
	10. Commission on Representation	Mary Reed
	11. Administration Commission/Treasurer	Susan Warren Sara Benedetti
	New Business	
	12. Installation of 2021 Moderator- Scott Cervas	Philip Lotspeich
	Adjourn and Closing Prayer	Moderator

**Stated Clerk's Report
Presbytery of Transylvania
November 14, 2020**

For Presbytery Action:

1. Move that presbytery accept requests for excused absence.
2. Move that presbytery seat corresponding members and grant them the privilege of the floor (voice).
3. Move that presbytery approve the minutes of the August 18, 2020, stated meeting.
4. Move that presbytery approve the minutes of the October 8, 2020, called meeting.

For Presbytery Information:

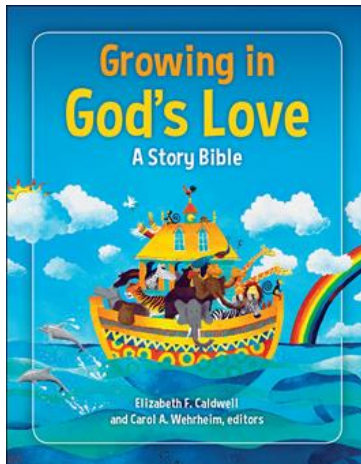
The 2020 Statistical Season will open soon. Robyn and I will send the relevant information to each church and clerk of session once we've received it from the General Assembly offices. If anyone needs assistance in completing the reports, please call the presbytery for help. Thanks in advance for attending to this important year-end task.



PRESBYTERIANS ORGANIZED IN **Nurture & Teaching**

It's not too late! Virtual Book Fair

If you receive this before November 11th, you still have time to order books through our Virtual Book Fair. The fair has run from October 26-November 11 and offers a 35% discount on all books and free shipping for orders over \$50. Shop at www.pcusastore.com and enter our code, **PRESBY35**, when you check out.



Growing in God's Love: A Story Bible

Through a grant from The Scattered Church of the Presbyterian Mission Agency, we have received 45 copies of this story bible to be distributed to our churches that might have need for some new resources for children. The Growing in God's Love story bible contains 150 stories organized in 13 themes. To request copies for your church, contact Ginny Baker at the email address below.

Curriculum Funding Available

While these story bibles can stand alone as a way to engage young children in the Biblical witness, there are curriculum units written for multi-age to go with the stories that allow you to offer Christian Formation/Education opportunities with these resources. The curriculum pieces come with segments for both at-home and intergenerational options that would help engage children whose churches are not meeting in-person and for congregations who find whole church educational times meet their needs well. *The Christian Formation Ministry Team has approved funding to help provide this curriculum to churches.* For more information on how to secure curriculum units through this funding, contact Ginny Baker. More information on the story bibles and the curriculum is available at www.pcusastore.com.

Ginny Harville Baker, POINT rep
Transylvania Presbytery
ghbaker60@gmail.com

Church Development and Revitalization Ministry (CDRM)

2020 Annual Report

November 6, 2020

Chair Jim Dougans, CLP, Maysville-First

The CDRM exists to work with current churches engaging in revitalization and transformation efforts and to promote and encourage the development of new worshipping communities.

Added Members

During 2020 the Ministry kept the existing members Karen Hartsfield, Ryan Bradney, and myself, and added three new members: Lisa Culpepper, Linda Kurtz, and Michael Denney. General Presbyter Philip Lotspeich attends most meetings. Karen Hartsfield accepted the position of Vice-Chair.

Frequent Meetings

Ministry members met seven times in 2020 and will meet again on November 9. All of the meetings have taken place via Zoom.

Reading “Divergent Church”

Together we are reading *Divergent Church* by Shapiro and Faris. The authors present a year-long analysis of twelve worshipping communities in the U.S. and conclude that new churches will retain time-honored practices while adding new elements to what it means to be the church. We will finish reading this book in three months.

Surveyed Leaders

The Ministry surveyed leaders in the Presbytery using Survey Monkey, asking the question “How can the CDR Ministry best assist you?” We received over 20 responses, with the number one request being for “a list of church revitalization resources.”

Supported the Nicholasville Steering Committee

The CDRM continues to monitor and support the work of the Nicholasville Steering Committee.

Presbytery On-Line Church

CDRM members Karen Hartsfeld and Lisa Culpepper are coordinating monthly worship services for use by any church in the Presbytery. These services began in September 2020. Other leaders are recruited to participate. Matt Falco is putting each video together. The November 1, 2020 service will include communion.

Providing Resources to Address Church Needs

Members of the Ministry facilitated a discussion on July 15 during the pastor's zoom meeting. We asked these questions:

- How our churches are managing thus far with their adjustments?
- What problems or challenges they are encountering?
- What positive growth (spiritual and virtual reach) they are experiencing?

We found that “overall pastors are confident about the direction their churches are taking, whether in-person or on-line.” We also found that “pastors are tired.”

Coming in 2021:

- Help churches in the Presbytery solidify the gains they have made.
- Make resources available.

END OF YEAR REPORT: NICHOLASVILLE STEERING TEAM

A BRIEF INTRODUCTION TO THE NICHOLASVILLE MISSION

In 2019, the Presbytery of Transylvania hired the Phila Consulting Group to help work alongside a team of discerning members in order to pursue planting a potential new worshipping community in Nicholasville, Kentucky. The team consisted of Beth Garrod-Logsdon, Rachel Mathews, Sylvia Carter, Susan Bradish, Jim Dougans, Philip Lotspeich and Phila Group consultants Brian Clark, Shannon Kiser, Gary Mears, and Dan Carlton. Over a period of 8 months and 6 face-to-face meetings, the team worked to discern a potential mission in Nicholasville. Meeting in local nonprofits and community rooms, walking the community, connecting with local leaders, working networks and existing connections, and following the Spirit of God, the team then identified a theological identity, a vision for the mission, a potential mission plan, and a missionary leader for the mission. In October, 2019, the team had several meetings/interviews with Jeff Shaver. At the end of 2019, The Discernment Team unanimously recommended Jeff Shaver as the Mission Developer for the Nicholasville Mission. A Letter of Intent was drawn up and shared with Jeff Shaver, and he responded affirmatively.

With the Mission Developer in place, in 2020 the “Discernment Team” then transitioned to the “Nicholasville Steering Team” with Susan Bradish and Sylvia Carter remaining on the team for a limited time while Beth Garrod-Logsdon, Jim Dougans continue their involvement in the Nicholasville Mission. In 2020 two new members were added to the Steering Team including Jay-T Silence and Lisa Culpepper.

OUR GOALS FOR 2020

In 2020 the Nicholasville project was still considered to be in early formational stages. Following closely to the Mission Plan created by Phila Consulting, the goal for 2020 was to pave the way for our official “Year 1” by 1) beginning initial brainstorming 2) forming relationships, 3) pursuing partnerships, 4) considering business options, and 5) implementing mission experiments in the Nicholasville community.

BEGIN INITIAL BRAINSTORMING

In 2020, the Steering Team met 10 times (8 over Zoom) in order to further discuss creating a church-business hybrid in Nicholasville Kentucky, recognizing that many church plants in Jessamine county do not survive simply because many congregations are unable to financially support themselves longterm. Furthermore, since the goal of the Nicholasville Mission is to engage with people who are resistant to church or disinterested in existing churches, the Steering Team continues to feel that a business could be the very best way to connect in a non-threatening, natural setting. In 2020, consideration was given to many possibilities including a for-profit fitness center, a secular non-profit mission, and a drug rehabilitation house for women. Throughout 2020, God has continued to grow our understanding of Nicholasville, including its many beauties and overwhelming needs.

FORMING RELATIONSHIPS & PURSUING PARTNERSHIPS

In 2020, the Nicholasville Steering Team felt the need to grow in relationship, not only with the city and people of Nicholasville, but with each other. Over the span of 3 months, the Steering Team spend several sessions participating in the StrengthsFinder (now CliftonStrengths) assessment by Gallup. Administered by Philip Lotspeich, much insight was given to our team regarding our own unique strengths as individuals as well as the kinds of personalities we might find it beneficial to add to our team in the future.

In 2020, while COVID-19 has certainly impacted our ability to create new relationships with the people of Nicholasville, God’s grace has prevailed nonetheless. In August, the Steering Team approved of Jeff Shaver joining the *Leadership Jessamine County* program with the hopes of growing both Jeff’s knowledge and relationship with the area of Nicholasville. Since joining, Jeff

has spent over 40 hours with the program touring Jessamine County, meeting various leaders and influencers, visiting non-profits in the area, and growing in the knowledge of Nicholasville, Kentucky.

In August, the Steering Team was introduced to a young Christian woman named Lindsey Bonds who is in the initial stages of starting a rehabilitation center for women. Since meeting her, Lindsey has been a wealth of information to the Steering Team in regards to the major drug addiction that's seen in the Nicholasville area. And since she personally knows many women and families affected by the crisis of opioids, Lindsey has made it her life's mission to help minister to that need. Since meeting her in August, Jeff and Lindsey has spent 4 Zoom sessions discussing the topic of addiction in Nicholasville and the potential possibilities for the future.

CONSIDERING BUSINESS OPTIONS

Throughout the brainstorming phase of 2020, much time was spent discerning whether a “for-profit business” or a “non-profit mission” would be better suited to exist alongside our potential church plant. While many churches have been planted successfully by first starting a business (usually a coffee shop, etc.), few examples exist of church plants that began as a non-profit mission. Broadstreet Ministry, however, is one of those few positive examples. In May, 2020, former pastor of Broadstreet Ministry, Michele Ward agreed to be a resource as the Steering Team discerns which model best fits the context of Nicholasville and is viable in sustaining a new worshipping community in the long run. Throughout 2020, much consideration, brainstorming, and prayer has taken place discerning how best to connect to the life and people of Nicholasville.

IMPLEMENTING MISSION EXPERIMENTS IN THE COMMUNITY

An example of a “mission experiment” might be forming a Bible study group that meets at a coffee shop or teaching a fitness class at the YMCA. In other words, implementing mission experiments is about taking little risks in order to see what might be successful (or not) in meeting a need or creating connections and relationships with the people of Nicholasville. With this in mind, nothing has been more affected by the Coronavirus than the ability to meet new faces and personally connect with the people of Nicholasville. For the Nicholasville Steering Team, this has certainly been the most frustrating part of 2020. However, all things considered, we believe that more “boots-to-ground” types of experiments will exist in 2021.

OUR GOALS FOR 2021

While the Nicholasville Mission in 2020, was considered to be in early formational stages, we expect to officially enter into “Year 1” of the Mission Plan prepared by the Phila Consulting in early 2021. With the Mission Developer (Jeff Shaver) moving from 10-15 hrs/week to 20-30 hrs/week, the primary focus for the year will be to further develop relationships, gather information, and move toward a definite business plan. Further goals include conducting 2-3 experiments in developing the mission and forming a core group of 4-8 people.

FINAL ASSESSMENT

Though 2020 has certainly been a difficult year, we look back with thankfulness and forward with excitement as to where God continues to leading us. As we grow in understanding the vast needs of Nicholasville, Kentucky, we are also growing in appreciating its rich history and beauty. With eyes that see redemptively, our hearts continue to ache for those in the Jessamine county who need to know the love that Christ has for them. And as we continue in showing Christ's love to Nicholasville through the Nicholasville Mission, we are thankful for all the support, and prayers that has come our way in 2020.

Congregational Issues Commission
Report for Presbytery meeting 11/14/20

The Congregational Issues Commission has consulted with and assisted three congregations in recent months. We have been meeting virtually and are preparing a proposed revision of the description of the Commission's work in the Presbytery of Transylvania's Manual of Operations.

Respectfully submitted by Kathy Riley, Chair.

Presbyterian Women

While this year has been unique, it was not without its accomplishments. We were unable to meet in the spring but were blessed to have been able to produce a virtual fall gathering, that was shared via YouTube. Many contributed to the effort. We could not have done it without the production and editing skills of Reverend Curtis Christian and the thought provoking sermon from Reverend Linda Kurtz.

PW has continued supporting mission work during this time. Our presbytery has now officially joined the other presbyteries of Kentucky, as well as the entirety of the Synod of the Living Waters in supporting Mission Haven. This organization serves mission co-workers of the PC(USA) by offering short-term housing, clothing, and spiritual support and is located adjacent to Columbia Theological Seminary in Decatur, Georgia.

Whether we are virtual or in-person, we are looking forward to resuming our spring gathering in 2021!

Respectfully submitted by:

Candace Moberly
Co-Moderator of the Transylvania Presbyterian Women
Ruling Elder, White's Memorial PC

Presbyterian Women of Transylvania
April 27, 2019 - September 2, 2020
Due to COVID-19 reporting will be for two years rather than one

Balance Forward 4/27/19		\$ 20,956.65
Income:		
2019 Spring Gathering Registration		\$ 1,080.00
Mission Pledges from PW		\$ 1,772.91
PW Grant		\$ 4,500.00
2019 Fall Gathering Registration		\$ 756.00
2019 Fall Gathering Horizons Table		\$ 169.00
	Total Income	\$ 8,277.91
Expenses:		
CT Expenses:		\$ 461.68
Corresponding Secretary	\$22.00	
Directory	\$185.00	
Horizons	\$208.45	
Newsletter	\$25.00	
Search Committee	\$21.23	
Mission Project		\$ 700.00
2019 USA Me	\$500.00	
Transylvania Presbytery Hunger Fund	\$200.00	
Triennial Gathering		\$ 150.00
CT Member Registration	\$150.00	
Spring Gathering:		\$ 2,024.50
Lunches	\$819.00	
Organist	\$50.00	
Pastor	\$50.00	
Honorarium	\$250.00	
Programs	\$165.50	
Program	\$690.00	
Summer Dickerson - \$570.00		
Yvonne Hileman - \$120		
Fall Gathering:		\$1,323.94
Horizons Supplies	\$359.94	
Lunches	\$804.00	
Human Trafficking Supplies	\$25.00	
Programs	\$135.00	
	Total Expenses	\$ 4,660.12
Balance as of 9/2/2020		\$ 24,574.44

Kay Grooms, Treasurer

Presbyterian Women of Transylvania
April 27, 2019 - September 2, 2020
Due to COVID-19 reporting will be for two years rather than one

Pass Through Accounts:

2019 Spring Gathering:		\$ 920.00
The Well of Lexington	\$425.00	
Buckhorn Children-Family Services	\$425.00	
Centsability (Stamp-Out-Hunger)	\$70.00	
2019 Fall Gathering		\$760.00
Camp Burnamwood	\$341.50	
CentsAbility Cups	\$77.00	
Liberty Place (LP)	\$341.50	
PW-PC(USA)		\$ 12,233.77
Birthday Offering	\$5,161.00	
Honorary Lifetime Membership	\$285.00	
Least Coin	\$1,394.87	
Mission-PW Annual Fund	\$1,837.50	
Stamp-Out Hunger	\$189.00	
Thank Offering	\$3,366.40	
Synod of Living Waters		\$ 497.92
Transylvania Presbytery		\$3,258.16
Buckhorn	\$450.00	
Burnamwood Camp	\$1,716.34	
Burnamwood Scholarship Fund	\$75.00	
Furlough Home	\$25.00	
Historical Foundation	\$5.00	
Interfaith of Breathitt County	\$200.00	
Lexington Service Ministry	\$75.00	
New Opportunities for Women	\$575.00	
Transylvania Presbytery	\$6.67	
Uspritus (Bellwood)	\$130.15	
Total Pass Through Account Giving		\$ 17,669.85



I hope all are healthy and well. I wish we could be together in person, but as the coronavirus pandemic prevents that from happening, I write to share these key updates from the Board of Pensions. If you have questions, my colleagues in Philadelphia and I are happy to assist.

Blessings,

Edward Thompson

Church Consultant

M: 215-587-7045

ethompson@pensions.org

Member/Employer Services

800-773-7752

Mon-Fri 8:30-7:00pm EST

Statement on Racial Justice

The Board of Pensions stands in support of racial equality, and against deeply ingrained prejudices against Black Americans and other people of color simply because of the color of their skin. With full support of all at the Board, we share this statement with you. Follow the link to [read the full text of the statement](#). Translations in [Korean](#) and [Spanish](#) are available as well.

2021 Annual Enrollment

The selections you make on your [2021 Employer Agreement](#) determine the benefits options and costs your employees will see during this year's annual enrollment, from October 26 through November 13. Look for emails, news articles, and more from the Board of Pensions to help your employees understand their options and make the best decisions when choosing their benefits coverage for 2021. For more information about this, you can access the [Annual Enrollment Employer Toolkits](#).

Other Notable Headlines

- [PC\(USA\) racial justice resources](#) – For more resources regarding racial justice, please visit PC(USA)'s website.
- [COVID-19 resources](#) – For more resources from the Board of Pensions regarding COVID-19, please visit our website.
- [State-based pricing for the dental PPO plan begins in 2021](#)—Previously, there was a single price for the national plan. Pricing details will be available in your employer agreement.
- [THRIVE](#) - Plan members and their spouses or partners are educated and engaged in personal financial planning as part of a larger exploration of identity, health, and vocation in retirement.
- [A 2% Experience Apportionment for the Pension Plan took effect July 1](#)—These are increases in accrued pension benefits for both active and retired pension plan participants. Pensions have increased 26.4% over the past eight years due to experience apportionments.

Changes to benefit offerings for 2021

The Board of Pensions has announced changes to the Benefits Plan that extend support to more ministers and add benefits that promote financial protection for all church workers effective January 1, 2021. Employers can choose benefits for 2021 beginning July 20.

Minister's Choice benefits package added

To address the Board of Pensions' concern that too many ministers are not enrolled in the Benefits Plan, the 2021 plan offers two benefits packages for PC(USA) ministers: the existing Pastor's Participation and the new Minister's Choice.

Enrollment in Pastor's Participation, a comprehensive benefits package with medical coverage and pension participation, is required for installed pastors and may be offered to any minister with a minimum 20-hour workweek. Dues, paid in full by the employer, will remain at 37 percent of effective salary for 2021, with no reduction to existing benefits and the addition of the new Temporary Disability Plan.

Benefits Packages		
	Pastor's Participation	Minister's Choice
Medical Plan	● PPO (includes EAP)	EAP only
Death and Disability Plan	●	●
Temporary Disability Plan	●	●
Defined Benefit Pension Plan	●	●

● Included in package

Minister's Choice, available for non-installed ministers working at least 20 hours a week, includes pension, death and disability, temporary disability, and the Employee Assistance Plan. The cost is 10 percent of effective salary, also fully employer paid.

Minister's Choice also opens the door for eligibility to assistance and education programs that have been available only through Pastor's Participation, such as CREDO and Minister Educational Debt Assistance.

New Financial Protection Programs

For 2021, the Board of Pensions has added financial protection options, including the Temporary Disability Plan, Long-Term Disability Plan, and an expanded term life benefit.

The Temporary Disability Plan provides a partial weekly income for up to 90 days of disability, with a 14-day waiting period before benefits payments begin. Employers pay the full cost for ministers enrolled in Pastor's Participation and Minister's Choice. Employers may offer it outside of those benefits packages, with the employer or the member paying the full cost.

The Long-Term Disability Plan offers financial protection for employees with a disability that surpasses 90 days, providing a partial monthly income throughout their disability. Employers may offer the plan to employees who are not enrolled in the Death and Disability Plan (which includes a long-term disability benefit) and are working at least 20 hours per week. Employers pay the full cost of coverage.

The Term Life Plan offers the same low-cost coverage available in the 2020 Benefits Plan. But in addition to a fixed amount of coverage (from \$5,000 to \$50,000), it includes a new feature — an income-based benefit amount, equal to one times a member's effective salary, capped at \$50,000. Under either option, employers pay the full cost of coverage.

The Board of Pensions' goal is for every minister and church worker to have access to quality benefits in support of well-being. The 2021 Benefits Plan advances on that goal while also enabling more ministers to access assistance and education programs designed to help them devote their best gifts to ministry.



Retirement Programs

- Defined Benefit Pension Plan
- Retirement Savings Plan



Financial Protection Programs

- Death and Disability Plan
- Term Life Plan
- Temporary Disability Plan
- Long-Term Disability Plan



Health Programs

- Medical Plan, with PPO, EPO, and HDHP options
- Employee Assistance Plan
- Vision Eyewear Plan
- Dental Plan



Tax-Advantaged Accounts

- Dependent care flexible spending account
- Healthcare flexible spending account
- Health savings account

KENTUCKY COUNCIL OF CHURCHES
73RD ANNUAL ASSEMBLY
OCTOBER 22-23, 2020
DELEGATE'S REPORT

The 73rd Annual Assembly of the Kentucky Council of Churches was held on October 22-23, 2020. The Assembly was originally scheduled to be held in Morehead, Kentucky, but was moved to a “virtual” event due to Covid-19. Delegates from the KCC member judicatories (including Transylvania Presbytery), as well as other guests and visitors, “attended” the gathering.

The theme of this year’s Assembly was “The Golden Rule,” and was something of a deep-dive into that classic gospel text (Matthew 7:12). The program included keynote presentations by Jud Hendrix (Interfaith Paths to Peace) and Robert Welch (past president of the Council on Christian Unity), as well as a panel discussion featuring Louisville Seminary faculty Susan Garrett and Justin Reed. Terri Hord Owens (General Minister - Disciples of Christ) preached at the Assembly worship service. Workshops at the Assembly included explorations of the Golden Rule in the context of natural disasters, social justice, interfaith relations, and political activity.

Several awards were presented to organizations and individuals for significant work in response to the 2019 Assembly theme (“Reclaiming Jesus”) including: the late Father John Rausch for his work in Appalachia; the Black Church Coalition of the Bluegrass for its work meeting needs of persons in Central Kentucky; CASA (Court Appointed Special Advocates) of Lexington for its work advocating on behalf of children affected by abuse or neglect; Common Good for its work promoting individual and community development.

During the business meeting, KCC Executive Board officers for 2021 were elected including Amanda Groves (Disciples of Christ) as President, Dale Raines (United Church of Christ) as 1st Vice President, Linda Axon (Church Women United) as 2nd Vice President, Batavia Combs (African Methodist Episcopal-Zion) as Secretary, and Melissa Holland (Roman Catholic Diocese of Lexington) as Treasurer. The Council’s ongoing financial challenges were also discussed, including the importance of supporting the KCC as a voice for God’s justice in the Commonwealth of Kentucky.

As a delegate representing Transylvania Presbytery, I found the assembly to be informative, challenging, and inspiring, and I came away with a new appreciation for the familiar (perhaps overly familiar) notion of “doing unto others as you would have them do unto you.” Like all those present, I regretted being unable to share fellowship in person, but I was grateful for the efforts made to bring us together virtually, and on the whole, I think the KCC leadership did a very effective job.

The 74rd Annual Assembly, is “planned” for October 21-22, 2021, at First Christian Church, Hopkinsville. The assembly theme will be “Connecting Neighbors: God, Creation, and the Church.”

Respectfully Submitted,

Michael L. Ward

Kentucky Council of Churches Delegate Report
Lawrence Monroe

As a delegate from the presbytery I enjoyed and felt blessed by the conference experience, in spite of the limitations of a ZOOM meeting. The topic of "The Golden Rule" was so right for this increasingly stressful time of Covid isolation, political polarization, and racial violence. All the speakers helped the diverse group of remote participants understand the complex history and meaning of the Rule. Friday afternoon's speaker, Dr. Peter Caprotto, outlined the history of the Rule and its relationship to the concept of empathy, as well as its strengths and limitations when put into practice. At the end of his Presentation Dr. Caprotto offered a challenge: What does it mean for faith leaders to practice political empathy in divisive times? That just as Jesus confronted political oppression with empathy (Luke 12: 49-53) it is an enduring pastoral political challenge today.

In her presentation titled "A Time of Remembrance, Reconciliation, and Hope", Rev. Terri Hord Owens expressed how the church must "stand up, speak up, and show up" to help lift up all who have suffered loss during this pandemic; that we should be inspired by scriptures expressing the promise of redemption in spite of a seemingly hopeless situation (Ps. 3:3); That we must value our neighbors as God does without putting them in a limited box. As Micah says, "make justice happen" (Micah 6:8).

The Friday morning panelists presented very helpful insights on the Golden Rule, Rev. Dr. Sue Parish from the New Testament perspective and Dr. Justin Read from the old. Rev. Dr. Parish compared Matthew's teaching with Luke's: Luke expresses the "Principle of Reciprocity" that one must give to others as God gives, not expecting any return or concern about the goodness or evil of the person; Matthew ties the Golden Rule to the whole law. Dr. Read referenced a number of passages from the Torah that expressed how the Israelites related to their Jewish neighbors in the nested family structures of Israel. He ended by looking at Leviticus 25:44-46 which deals with the sale of slaves, asking how we deal with this tension today?

Friday's keynote speaker, Dr. Robert Welch, challenged the group to love others unconditionally in spite of differences in beliefs or doctrine. He made reference to the "holy" codes of Leviticus that is a call to action toward oneness with God in terms of how we treat others; that the Jewish teaching in Jesus's day about relations with others was in the negative, that is, do not harm others if you don't want to be harmed. Jesus turned it around and called for positive action and expanded it to cover everyone. Dr. Welch reminded all that "we are God's ambassadors to the world."

LIVING WATERS FOR THE WORLD
Report to Transylvania Presbytery, November 2021

The activities of Living Waters for the World (LWW) have obviously been severely limited by the COVID-19 virus. We continue to function as best we can, largely by virtual means. A few points that are particularly relevant to Transylvania are listed below:

1. Reports are that the water system installed by the team from FPC, Maysville last November in the town of Tikinmul, MX has done well. Ricardo, the church's pastor, did contract the virus although we understand that he has recovered pretty well.
2. The annual partner conference for the Yucatan network was held in February, in the town of Limones, Mexican state of Quintana Roo. This was a few weeks before the impact of the virus began. The timing of the next conference is being debated.
3. The Yucatan was severely flooded by Tropical Storm Cristobal in June and to a lesser extent by Delta in October. We believe that any systems that were damaged have recovered.
4. The Transy Presbytery team, which is centered in Danville, had intended to install a clean water system in the town of Xbacab in the Mexican state of Campeche. This was planned for July but that date obviously became impossible. It was decided that our Mexican partners have developed enough expertise to both install the system components and conduct the education portion and to do all this themselves. The money for materials has been wired to our partners and we expect the installation to in mid-November. We hope that the situation will be such that some face to face meeting with the brothers and sisters at Xcacab will be possible later in 2021.
5. LWW conducted its first virtual Clean Water U training in October for about 35 students.

COMMISSION ON PASTORAL TRANSITIONS
Presbytery Report
November 14, 2020

Since the last stated meeting of Transylvania Presbytery on August 18, the Commission has met on August 26, September 30, and October 28, 2020 and reports the following actions:

1. Dismissed the following Teaching Elder Tammy Schmidt (At-Large) to the Presbytery of Eastern Oklahoma (8/26/20)
2. Granted Honorable Retirement to Rev. Tim Noel, effective September 1, 2020 (Rev. Noel will continue as Temporary Supply of the Whites Memorial Church, Berea)
3. Approved the following calls:
 - a. From First Presbyterian Church, London, to Rev. Griffin Philips Ryan as Pastor (full time), beginning September 1, 2020:

Cash Salary	\$30,991.00
Housing	12,000.00
SECA	3,288.81
Full Board of Pensions participation	
Paid vacation	4 weeks
Paid continuing education leave	2 weeks
Travel expenses reimbursed at IRS rate	
Continuing education reimbursement	750.00
 - b. From Hunter Presbyterian Church, Lexington to Rev. Emily Miller as Pastor (full time), beginning November 2, 2020:

Effective Salary (Cash & Housing)	\$53,000.00
SECA	4,054.50
Full Board of Pensions participation.	19,610.00
Phone	\$50/month
Reimbursable expenses	4,050.00
(travel, continuing education, books)	
Vacation	4 weeks including 4 Sundays
Continuing Education Leave	14 days including 2 Sundays
Family Leave	3 months with full pay and benefits
Sabbatical Leave	8 weeks after 6 years of service
One time allowance for purchase	1,000.00
of laptop computer to be used for church work, but to be property of pastor	
Upon dissolution of this call, the pastor retains the right to use, publish, and sell or otherwise distribute her creative property produced while at Hunter Presbyterian Church, and grants Hunter the right to continue to use such property for Hunter in Hunter-specific, non-commercial context	
 - c. From First Presbyterian Church, Pikeville to Candidate Scot Robinson as Pastor (full time), effective November 1, 2020

Cash Salary	\$30,408.00
Use of Manse	
Utilities paid directly by church	
SECA	2,326.20
Full participation in Board of Pensions	
Vacation	4 weeks
Continuing Education Leave	2 weeks

Consideration of sabbatical leave after 6 years of service	
Moving expenses	3,000.00
Travel expenses at IRS rate	
Continuing Education	1,000.00
Reimbursement Allowance	

4. Appointed the following Commissions:
 - a. Commission to Install Rev. Griffin Philips Ryan as Pastor of First Presbyterian Church, London, on November 15, 2020 at 2:00 p.m. (via Zoom):
Moderator: Rev. Scott Cervas
Ruling Elders: Diane Bowling, London; John Erwin, Danville
Teaching Elders: Rev. Lisa Eye; Rev. Beth Garrod-Logsdon; Rev. Hannah McIntyre
Also participating with the Commission: Rev. Kilen Gray, Rev. Philip Lotspeich, Rev. Sean Ryan
 - b. Commission to Ordain and Install Timothy S. “Scot” Robinson as Pastor of First Presbyterian Church, Pikeville, on December 6, 2020 at 6:00 p.m. (via Zoom)
Moderator: Rev. Scott Cervas
Ruling Elders: Chuck Hoffman, First Pikeville; Libby Ratliff, Prestonsburg First; Jim Fields, Graham Memorial
Teaching Elders: Rev. Steven Sanders; Rev. Janice Stamper
Also participating with the Commission: Rev. Rob Musick, Chaplain, University of Pikeville; Dr. James Browning, First Pikeville
5. Dissolved the Pastoral Relationship between Second Presbyterian Church, Lexington, and Rev. Sara Benedetti, effective September 13, 2020; and changed her membership status to At-Large
6. Approved the request from Rev. Jim Stewart (HR), East Iowa Presbytery, to officiate a wedding for members of The Presbyterian Church, Danville, September 2020, at the invitation of Moderator, Caroline Kelly.
7. Approved the Ministry Information of Stanford Presbyterian Church, seeking full time Pastor
8. Approved the Renewal of the Temporary Supply Contact between the Stanford Presbyterian Church and Rev. Elizabeth Stone
9. Appointed the following Session Moderators:
 - a. Teaching Elder Steve Pace—Harrodsburg United
 - b. Commissioned Ruling Elder Bill Reed—Old Paint Lick

The Commission was made aware of and/or is working with the following transitions:

1. Lexington First – welcomed Emily Powers as new Director of Children & Youth Ministries on September 8, 2020
2. Mt. Sterling – Rev. Rob Warren, Pastor, has accepted a call in North Carolina. His last Sunday will be November 29, 2020
3. Prestonsburg – Rev. Dr. Stephen Sanders, Temporary Supply, has accepted a new call. His last day will be November 30, 2020
4. Ashland—Rev. Bill Pollock, Non-Presbyterian Temporary Supply, has accepted a new call. His last Sunday will be November 15, 2020
5. London First—Rev. Dr. Jim Rucker, Jr. has completed his service as Interim Pastor
6. Hunter—Rev. J.T. Silence has completed his service as Interim Pastor

Commission on Preparation for Ministry
2020 Yearly Report

Informational Only

CPM'S yearly activities:

- Met monthly except for April and August. Reviewed and approved monthly minutes.
- Liaisons gave monthly updates of Inquires/Candidates and CRES/CPS under our care.
- Reviewed the 2020 Budget.
- Welcomed new members, Rev. Stephen Sanders and Rev. Rollin Tarter.
- Gave a onetime grant of \$262.50 to each of our Inquires/Candidates and CRES/CPS.
- Annual Retreat was held on July the 24th and 25th via Zoom. Candidates and CRES/CPS checked in for their annual evaluations. Workshops included Self- Care, presented by Jennifer Blair, Commonwealth Counseling Services and Online Ministry, presented by Rev. Keith Benze and Rev. Stephen Fearing. Approved all Candidates and CRES/CPS to continue with the program.
- Reviewed and approved several Psychological Evaluations.
- Approved Sarah Green as an Inquirer and approved her for Candidacy, pending Presbytery approval in November.
- Approved Donna Phillips as a Candidate and approved on August the 18th, by the Presbytery.
- Approved Scot Robinson as ready to receive a call. Approved by the Presbytery on October the 8th, through examination and has received a call to Pikeville.
- Approved Mikkle Hampton for admission to the CRE/CP Program.
- Chose ordination Exam Readers for February 2021. Readers are: Ginny Shanda (Ruling Elder), Scott Cervas (Teaching Elder) and alternant, Rollin Tarter (Teaching Elder).
- Approved a CRE/CP Certified Ready to Receive a Commission Protocol.
- Approved a Final Written and Verbal Assessment for CRES/CPS.

Respectfully submitted,
Connie Turner, CPM Chair

Biography

My name is Sarah Lynn Green. I was a *Smith*, before I married a *Green*, and I'm still *Sarah Lynn* if we met before I was 10, we're family, or I've done something notable. *Sarah* was a popular name in south Florida in 1988, and between several of us sharing the name at school and my southern parentage, the double name was the only obvious solution. When folks ask where I'm from, or worse, where is home, it feels like a trick question. Is it about that hint of an accent that's hard to place, the not from here but not quite there, either? Is it just a conversation starter? It's hard to answer. I was born in Florida, raised there, and we gradually moved up the state, changing houses or schools with regularity. I wouldn't call Florida "home," though, as much I will always find myself particularly at ease on the water. After high school I bounced around the south east, hitting parts of Tennessee, Kentucky, Arkansas, back to Florida then ultimately back to Tennessee and Kentucky by the end of my degrees. At this point, I'm something of an Appalachian homing pigeon; I inherited my parent's restless streak, but never stray too far, for too long. My paternal grandmother once shook her finger at my young sister and I, declaring, "you're a hillbilly too, like it or not. It's in your blood." She wasn't wrong. Amid all that moving around as a kid, it wasn't all chaos. At least 2 things stayed consistent: Catholic schools, and visits to Eastern KY.

Mom and Dad were both born and raised in Pikeville, though they had settled in Florida by the time I came along. Evidently, my ecumenical streak began at birth. I was baptized Episcopalian, and raised Roman Catholic until around middle school when they stopped going, which left me sampling youth groups with friends. Once I could drive, I settled on worship at a large non-denominational church where I could blend in, as I often went alone. Most Sundays I worked the nursery at a Charismatic church plant started by a friend's family. As a kid, I liked rules and structure, and I thrived in Catholic schooling. I prayed the rosary during recess and made up sins during my first confession so I'd have something to say, because I was too young to realize that perfectionism was its own sin. Amid all the change, the liturgical year grounded me. Florida doesn't really have seasons, but the church does. I knew, wherever we landed, that when I walked into a Catholic church, I could find my feet and my knees. I knew what to say, when to say it, and believed true even the parts I didn't understand. While I no longer considered myself Catholic, bits of it never leave. As a teenager, it was a rude surprise when my non-denominational church skipped Advent straight for Christmas. Didn't they know we couldn't "Joy to the World," until the Savior actually came? Worse, still, when the church I worked for called the pastor's wife, "Pastor," too, because she married one. I was flabbergasted. I'd felt a pull toward theology, but in the formal life of the church, wasn't sure I fit anywhere.

When I started college, I was focused on horses and leaving Florida. I picked up riding in high-school and thought I would work in the equine industry. I soon found myself elbow deep in a thoroughbred, and decided this wasn't fun anymore. I re-joined my family outside Orlando and took a scholarship to the community college for my A.A., transferring to UCF with a focus on early childhood development. I was a semester shy of graduation when an abusive relationship

ended, and I failed my classes and quietly all but dropped out. I worked full time and took a single night course. It was “The Classical Texts of Judaism,” and I loved it. After our first exam, the rabbi stopped me after class. I thought I was in trouble, exposed as an interloper. Instead, he thanked me for “getting it.” It was a pivotal moment. I wasn’t sure what the path would look like, but I was going to do *something* with theology, the tug was firm. So naturally, I ran.

I moved back to Tennessee to work for my aunt, and met the man who would become my husband 2 weeks in. He took a job on the road and supported my return to school. I moved to Pikeville because we still had a house there, enrolled at UPike, a Presbyterian birthed college, and took the Religion degree specific courses in a year. I found mentors in my professors; I wasn’t reading and thinking in an echo chamber anymore. One was a Presbyterian woman. She had a Ph.D. and read Hebrew when she didn’t like an English translation, and to top it all she was an ordained minister. She might as well have been a unicorn. Her husband led the church in Prestonsburg and I attended there. I’d stumbled back into a mainline, liturgical church, and this one let women stand up front. While at UPike, the chaplain signed me up for a Sunday at FPC Pikeville, and I delivered my first sermon. It wasn’t earth shattering, but it planted a seed. The same church later allowed my husband and I into the sanctuary one Friday after my classes so we could elope. In the course of a year, this little Presbyterian church was the touch point for some of the more defining moments of my adult life.

I was the only person surprised by my decision to go to Vanderbilt for graduate school. I entered Divinity School unsure what I was doing, but expected it to end with a quiet library, graded papers and a Ph.D. At the end of the first semester, I got pregnant and miscarried. It wrecked me. While I was no longer on speaking terms with God, people showed up in surprising, loving, life-giving ways. I came to accept that if God wasn’t somewhere “up there” playing chess and killing babies, maybe God was still at work in the people who showed up. It corresponded with my first field education placement, Vanderbilt Hospital, and my notions of staying in the ivory towers faded. I needed to “get my hands dirty,” and I set firmly on the path to chaplaincy. While in school, still reeling from the miscarriage, I went to what I thought would be the furthest end of the spectrum from where I had been—I hung out with an Alliance of Baptists congregation (Glendale Baptist) for 3 years. They were lovely, affirming, co-pastored by 2 women, and graciously made space for my anger and doubts and reconstruction. We had a few conversations about ordination, but in the end I couldn’t do it. I was “Glendale” but I knew I wasn’t “Baptist.” I graduated in December of ’18, and spent the winter with my husband in South Florida for his job. By spring, I had lined up my CPE Residency year to start in August at UK in Lexington, but had no plans for the summer. I reached out to my people at UPike, still thinking about teaching or picking up some PRN shifts at the hospital. Instead, Rob (the chaplain) replied with, “what about a pastoral internship?”

It was the last thing I’d had in mind, but by this time I’d learned to recognize and heed “the tug.” It was time to circle back to Pikeville, and to this same congregation, so I did. And it was a gift I never expected. I didn’t have a “home-church” growing up, and was always envious

of those who did. In its own way, FPC Pikeville took that on. There are several members who, while my family wasn't Presbyterian, remember the grandfather I never met, or grew up with my father, or were friends with my grandmother, and they welcomed me as if I'd always been among them. I found joy in using the lectionary to craft messages and apply all of this experience and schooling that I'd just finished. Standing there with them every week, walking up to the lectern, it all felt like putting on an old pair of jeans. They didn't balk the time my childcare fell through and I went through an entire service with my toddler on my hip. In serving that congregation, I was able to bring my full self, and in the process realized that "self" happened to be Presbyterian. It was suddenly so obvious it was laughable. In that sense it was sort of anti-climactic, more matter of fact than single moment of clarity, more quiet assurance than novel discovery. My name is Sarah Lynn Green, and I'm a Presbyterian.

Statement of Faith

C.S. Lewis noted, “Besides being complicated, reality, in my experience, is usually odd. It is not neat, not obvious, not what you expect.” I apply that to God, too. So of course, the one God of my monotheistic faith is also triune, his son Jesus is both fully human *and* fully divine, and then there is this Spirit who doesn’t care a bit about the plans we’ve made for ourselves and sends us wherever She pleases. It’s hard to come up with a statement of faith because the Holy is just so unruly it’s hard to know where to begin. But then, that’s also the fun of it, because while I do love theology, it’s a wild goose chase, and if I’m trying to get God figured-out then not only will I fail, I’ll have missed the point. Here are the things I do believe.

I believe in God, the creator of everything, who didn’t stop and wipe their hands clean but continues to create. There is “God,” and there is everything that is “not God,” that still bears some resemblance to the One who made it. Just like it’s easy to tell a Picasso painting at a glance, I believe that if we could have some grand over-view vision, we could look at God and look at creation and go, “yeah. That’s got God written all over it.” The implications of this are staggering and often inconvenient. We don’t get to trash the world we live in, our environment was created with care and deserves care, and we were specifically tasked with that job. The hardest, messiest places and times we can imagine are still holy ground, there is sacred in the profane. I know, because as a chaplain that’s where I work, and I meet God there regularly. God seems to have a thing for diversity or we would all fit the same mold, so maybe we should quit trying to cram people into one, or claiming that one is better than another. The people I can’t stand, the jerk who cut me off in traffic, my political opposites, that guy who refuses to pull his mask up over his nose...they have something to teach me about God (and maybe myself!), and therefore cannot be simply dismissed. I might think they’re stupid, but they’re also beloved.

I believe in Jesus, the Son of God, born to Mary (who never gets enough credit), and he was fully human and fully divine. As people, beautiful people but still “not God,” we couldn’t handle Love staring us in the face, it’s uncomfortable and makes us do things like care for widows and question authority, so we crucified Him. And thank God, despite our best efforts, He didn’t stay dead, so we don’t have to either. The totality of it matters, it is Jesus’ life, death, and resurrection that elicit the praise we give Him, and serve to right our relationship with God, in Jesus is our salvation.

I believe in the Holy Spirit, thanks to the Holy Spirit. The Spirit stays busy, the source of wisdom and creativity, the Spirit brings us to faith and shows us how to live it out. All analogies fall short but, in the Godhead, I picture Her as the flour-dusted apron wearing matriarch everyone calls “Ma’am,” who keeps up with everyone in the family’s dealings, is the source of support and counseling, and sticks with you even when you insist on trying things the exact way She told you not to. She brings clarity when we would otherwise be fumbling around blind.

The Spirit is also concerned with salvation and scripture. I believe it was the Spirit present and guiding the development of our Holy Scriptures, and the Spirit who testifies to their validity despite the humans who wrote it all down. When we read them, when we meet God and Jesus in their pages, it is through the work of the Spirit that it happens.

I believe that sacraments are “outward signs of invisible grace,” and wish we celebrated communion more than once a month. Baptism happens once, in community, a sign of the covenant and the entry into Christ’s church. It’s the start of the journey. The Lord’s Supper is the bread for that journey, nourishment as we carry on, the provision of grace. It is the family dinner where Ma’am reminds us what we know in our bones, that everything gained in Christ’s life, death and resurrection are ours, too, in the sacrament as we partake.

I believe that it is not coincident that Godself is a relationship, and that we humans are also meant for relationships, as messy as they tend to be. We are accountable to God and to one another, and our involvement in the life of the church helps us do it.

**Coordinating Commission
Report to Presbytery
November 14, 2020**

Since the August presbytery meeting, the Coordinating Commission of the Presbytery of Transylvania has met two times: September 15, 2020, and October 20, 2020.

The Coordinating Commission has taken these actions:

- Approved communion observances for virtual worship services (first Sunday of each month, September 2020 through March 2021) being provided through the Church Development and Revitalization Ministry
- Began a process to update/revise Manual of Operations
- At the request of Pastoral Transitions Commission, called a presbytery meeting for October 8, 2020, for the purpose of examining a candidate for ordination
- Formed a group to lead the presbytery in conversations around racial equity and justice. Members include: Rachel Anderson (convener), Hannah McIntyre, Mark Davis, Jim Dougans, Rose Taul, and Caroline Kelly
- Endorsed the recommendations from a joint group of Administration and Coordinating Commission members charged to review the presbytery's reserves and consider the sustainability of current operations. Pending the final review of the Administration Commission, these are the recommendations: 1) undesignate currently restricted funds from the sale of Gleneagles property, 2) consider higher levels of per capita to meet administrative expenses and unified giving to support mission, and 3) review staffing levels. (See Attached)
- Schedule a second forum on issues surrounding gun violence in January or whenever the speaker can be available.

Recommendations for Presbytery Action:

- Approve the following 2021 meeting dates (subject to change depending on COVID restrictions):
 - Tuesday, February 2, 2021, 5 to 7 PM, Zoom
 - Tuesday, May 18, 2021, 5 to 7 PM, Zoom
 - Tuesday, August 17, 2021, 5 to 7 PM, Zoom
 - Tuesday, November 9, 2021, 5 to 7 PM, Zoom

Coordinating Commission/Administration Task Group on Reserves

Members: Sara Benedetti, Linda Crawford, Rachel Mathews, Mike Ward. Staff: Robyn Justus, Philip Lotspeich.

On October 19, 2020, the task group met by Zoom to analyze the health of presbytery reserves and the impact that dwindling reserves might have on the life of the presbytery in the next two budget cycles and beyond. Sara, Rachel and Robyn had done previous work on the Proposed 2021 Budget.

The key issue facing the Presbytery is one of sustainability. Given our current spending and giving patterns, how long will our reserves be available to support the gap between what we receive (per capita and unified giving) and our spending? And if that gap cannot be closed, how long will our current reserves last before drastic cuts to staff and programs must be made?

We have already taken a potentially big step toward addressing this gap by taking a look at Camp Burnamwood and setting it on a course toward sustainability. Depending on the course set by the Presbytery, Burnamwood will either need to be breaking even or close to it by the end of 2022 or we will be faced with another inflection point.

The recommendations below would be predicated on work that would be done in 2021 and 2022. Namely exploring the various possibilities for closing that funding gap and examining the efficacy of our mission and ministry. If we simply make moves to extend the financial cliff a few years and do none of the work to change the outlook, we simply kick the can down the road. It will take the pressure off of us now yet simply delaying it for a few years.

In that 2-year period, we discussed the need to set metrics for determining whether or not progress is being made with Burnamwood, staffing, mission and ministry. Those metrics would be used in 2022 to determine any changes that would be necessary. Additionally, we would work in those 2 years to build a comprehensive stewardship group (commission or ministry) that would develop our funding sources. Unified Giving is an area that has potential for growth but need sustained and focused attention to develop. Per capita is another area of possible growth. Our Presbytery portion of per capita is currently set at \$25.51 per member. By looking at the administrative budget and dividing by the number of members in the Presbytery, per capita would need to be \$33.74/member to fully fund our administrative work. As a reminder, per capita only funds administrative items. Mission and ministry are funded by unified giving. An example of a useful metric would be setting an acceptable percentage of the budget to be funded by reserves or restricted funds. Currently, roughly 40% of our budget is funded by reserves and designated sources. We could set a target of 10-20% funding by the end of 2022, which would indicate a much healthier financial condition.

Finally, last year we began to explore more cooperation between Kentucky Presbyteries. One strategy to explore would be to further collaborate but in increasingly substantive ways that would enhance our mission and ministry and close the gap between funding and spending. Of course, those conversations will be more difficult, especially if we have to significantly change how we do what we do.

The financials as of September 30, 2020 were reviewed. The designated and undesignated reserves were reviewed. (Appendix 1)

Here is a summary of projections of undesignated reserves in 2021 and 2022 based on current financials, the 2021 proposed budget and without any fundraising efforts or increases in per capita.

412 Rose Street Foundation Account	\$167,711
<i>Total Undesignated in General account at Foundation/Chase Bank</i>	<i>\$76,892</i>
<i>Burnamwood year-to-date as of 9/30/20</i>	<i>\$(27,231)</i>
<i>Projected Burnamwood Dam cost remaining in 2020</i>	<i>\$(60,000)</i>
Projected Balance in Total Undesignated Reserves 12/31/2020	<u>\$157,372</u>
412 Rose Street Reserves projection for use in 2021 Budget	\$(69,506)
Projected Balance in Total Undesignated Reserves 12/31/2021	<u>\$87,866</u>
412 Rose Street Reserves projection for 2022 Budget	\$(69,506)
Projected Balance in Total Undesignated Reserves 12/31/2022	<u>\$18,360</u>

The following recommendations are proposed:

1. **Undesignate** the Church Development/Redevelopment account that is invested at the Presbyterian Foundation that has a balance of \$180,406 and move the funds to the General Account at the Foundation.

At the June 6, 2009, Presbytery meeting, the Presbytery approved an action that designated \$111,756 of the Gleneagles property sale for church development or redevelopment. These funds were invested in a c.d. until 2017 when the funds were moved to the Church Development/Redevelopment account invested at the Presbyterian Foundation. No funds have been withdrawn from this account since that time. The investment has increased by \$59,399 since the initial deposit at the Foundation. This action would give us funding for the current staffing pattern and give the Burnamwood Vision Group time to implement a Burnamwood strategy.

If approved it would add \$180,406 to our undesignated reserves and the analysis would look as follows:

Undesignated Reserves	$\$167,711 + 180,406 =$	<u>\$348,117</u>
<i>Total Undesignated in General account at Foundation/Chase Bank</i>		<i>\$76,892</i>
<i>Burnamwood year-to-date as of 9/30/20</i>		<i>\$(27,231)</i>
<i>Projected Burnamwood Dam cost remaining in 2020</i>		<i>\$(60,000)</i>
Projected Balance in Total Undesignated Reserves 12/31/2020	$\$157,372 + 180,406 =$	<u>\$337,778</u>
Undesignated Reserves projection for use in 2021 Budget		\$ (69,506)
Projected Balance in Total Undesignated Reserves 12/31/2021	$\$ 87,866 + 180,406 =$	<u>\$268,272</u>
Undesignated Reserves projection for 2022 Budget		\$(69,506)
Projected Balance in Total Undesignated Reserves 12/31/2022	$\$ 18,360 + 180,406 =$	<u>\$198,766</u>

2. Develop a task group and strategy to work on stewardship.

The current portion of per capita that stays in the presbytery's budget is \$25.51 per member. The actual presbytery per capita amount based on expenses is \$33.74 per member. Presbytery's membership is 6569. If we increased per capita based on our expenses that should be charged to per capita, we could increase revenue by approximately \$50,000 in 2021. The task group is not recommending this increase at this time of pandemic but should be an issue to consider.

3. Staffing was reviewed and considered. The presbytery has a small staff. We do not believe this is the right time to make a change.

We propose that conversations should begin in 2021 with all options on the table from reducing staff to sharing staff with other Presbyteries.

Appendix 1

Reserves as of 9/30/20

Accounts	Purpose	
Caldwell Campbell (invested at Presbyterian foundation)	Designated that dividends are to be received by First Richmond	36,316
Church Development/Redevelopment (invested at Presbyterian Foundation)	Proceeds from sale of Gleneagles property; designated for church development/redevelopment	180,406
General Account (invested at Presbyterian foundation)	Operating account (includes the following designated funds)	166,066
Operating Account Balance	Chase	65,405
Administrative Personnel	The Administrative Personnel Loan Fund is a special ministry administered by the Presbytery of Transylvania through the Department of Ministry. Its purpose is to make low interest loans available to administrative personnel (secretaries, bookkeepers, off	(2,500)
Candidates Grant Fund	Grants are issued by CPM. This money comes from offerings taken at Installations and Ordinations of Ministers.	(8,707)
Emergency Grant Fund	Emergency Grants for Churches in a crisis.	(3,500)
Five Cent Hunger	Grants are issued by the Mission Committee. Some churches include this in their budget. 50% collected goes to GA & 50% stays in Transylvania.	(3,450)
Greenway Designated Fund	Portion of the Greenway Funds received in the operating budget in Dec.2019 by adopting spending formula of 5% of the average year-end value for the three trailing years for the John M. Greenway Fund.	(19,183)
Burnamwood Scholarship	Scholarships for individuals to attend Burnamwood.	(5,019)
Funding from Synod--for "Stewardship"	Funding received from the Synod to be used for Stewardship Projects/Workshops	(3,417)
Proceeds from Sale of Church Property	Closing of Morris Fork, St.Helen's, Sharpsburg, Bethesda; funds received from Greenbriar & Wooton church property; can be used for church development/redevelopment; \$15,000 of Vicco proceeds can be used for leadership development; \$10,000 downpayment from Manchester; sale of Garrard Manchester property \$69,845	(108,367)
Peacemaking	1/3 of the peacemaking offering that stays in the Presbytery. Mission Committee issues grants from these funds.	(436)
Total designated funds in General Fund		(154,580)
Total of undesignated reserves in General Fund		76,892
John M. Greenway Trust (Invested at Presbyterian Foundation)	Permanently restricted fund; trust document says that "interest can be used each year to employ evangelists for the purpose of bring precious souls into God's kingdom helping struggling churches in the Mountain districts of Kentucky"; dividends are used to fund a portion of the General Presbyter compensation.	1,192,099
Harmony Cemetery Fund (Invested at Presbyterian Foundation)	Created 1957. No records of maintenance after 1971.	8,173
John F. White Fund (Invested at Presbyterian Foundation)	Income used at discretion of Trustees for the following purposes: Whites Memorial Church, Indigent Presbyterian ministers, poor. Trustees have approved the following annual distributions: \$24,200 to Whites Memorial Church and \$12,000 to the operating budget under Pastoral Transitions for ministers in need.	681,261

Mec Lona Davis Fund (Invested at Presbyterian Foundation)	Designated for Guerrant Memorial Presbyterian Church; dividends are distributed to Guerrant each year.	242,201
Nicholasville Church Redevelopment Fund (Invested at Presbyterian Foundation)	These funds from the sale of the church property shall be used to strengthen and further the PC(USA) witness in Jessamine County. Action of Presbytery November 11, 2017	255,738
412 Rose Street Proceeds (Invested at Presbyterian Foundation) Campus Ministry Funds (invested at Presbyterian Foundation)	\$7,552 is used each month in the operating budget. These funds are invested at the Presbyterian Foundation. Presbytery does not control how these funds are invested. Presbytery receives dividends from these funds for the purpose of campus ministry in Appalachian counties of Kentucky. These dividends are used to award campus ministry grants in those counties designated by the funds.	167,711
CG Bowman		13,939
Dickson-Davis		5,520
FK Jones		26,172
Home Economics Birthday		114,482
Richard Spencer		2,604
Total Campus Ministry Funds		162,716
Total of Accounts as of 9/30/20		3,158,092
	Estimate of Needed Operating Reserves (four months of expenses)	159,133
	Estimated Balance in Undesignated Reserves as of 9/30/20	(82,242)
	Total Designated Funds	2,913,489
	Total Undesignated Funds	244,603
	Total of Accounts	3,158,092

**PRESBYTERY OF TRANSYLVANIA
COMMISSION ON REPRESENTATION
November 14, 2020**

The Commission on Representation shall be composed of six members who shall be nominated by the Coordinating Commission and elected by the Presbytery. It is tasked with an intentional purpose: to ensure the church's commitment to inclusiveness and the principles of unity and diversity (per G-3.0103).

Current membership of the COR:

1. Mary Reed, Chair	Teaching Elder	Retired	2022
2. Gayle Burns	Ruling Elder	Buckhorn Lake	2021
3. David Hoskins	Ruling Elder	Corbin	2021
4. Diehl Ackerman	Ruling Elder	Morehead, Faith	2021
5. Schuyler Olt	Teaching Elder	Carlisle	2021
6. Jean Harney	Ruling Elder	Danville	2022

Below is a roster of commissions, ministries and other positions within the Presbytery. Those in **bold print** are recommended for nomination:

MODERATOR			
Scott Cervas	Teaching Elder	Lex., Meadowthorpe	2022
VICE-MODERATOR			
Julie Olt	Teaching Elder	Cynthiana	2023
STATED CLERK			
Jerry Utt	Teaching Elder	Versailles, Troy	2021
TREASURER			
Sara Benedetti	Teaching Elder	At-Large	2023

COORDINATING COMMISSION

Chair, _____

1. Linda Crawford	Past Moderator	Ruling Elder	Lex. Second	2021
2. Scott Cervas	Moderator	Teaching Elder	Lex., Meadowthorpe	2022
3. Julie Olt	Vice-Moderator	Teaching Elder	Cynthiana	2023
4. Kathy Fish		Ruling Elder	Corbin	2021
5. Andrew Bowman		Teaching Elder	Somerset, First	2021
6. Tom Burns		Ruling Elder	Buckhorn Lake	2022
7. Helen Miller		Ruling Elder	Versailles, Troy	2022
8. Matt Falco		Teaching Elder	Lex., Maxwell St.	2023
9. John White		Teaching Elder	At-Large	2023

The voting members of the Coordinating Commission (CC) shall be: the current Moderator of Presbytery, the current Vice-Moderator of Presbytery, the immediate Past Moderator of Presbytery; and six other members of the Presbytery, formed into 3 classes of 2 each, with each class a term of three years, and nominated by the Commission on Representation and elected by the Presbytery at the annual meeting. The CC shall set forth mission directions, goals, objectives and priorities as it is guided by the Presbytery’s Mission Statement, shall regularly review the Presbytery’s Mission Statement, and, together with all Commissions and Ministries of the Presbytery, shall be responsible for coordinating the work of the Presbytery between its meetings and for ensuring that the decisions made by the Presbytery are carried out.

ADMINISTRATION COMMISSION

Chair, Susan Warren

Advisory Member, Sara Benedetti (Treasurer)

1. Ted Kuster	Ruling Elder	Paris, First	2021
2. Jim Olive	Ruling Elder	Georgetown, First	2021
3. Susan Warren	Teaching Elder	Retired	2022
4. Rachel Mathews	Teaching Elder	Lex., Maxwell St.	2022
5. Sue Lake	Ruling Elder	Cynthiana	2023
6. Michael Denney	Teaching Elder	Lancaster	2023

The Administration Commission shall be composed of six (6) members. The duties of the Commission shall include serving as the Trustees of the Presbytery, and having responsibility for Accounting, Budgeting, and Staff Services. The Treasurer of the Presbytery shall serve as an advisory member with voice and without vote.

CLOSING COMMISSION

Chair, Curtis Christian

1. Larry Snyder	Ruling Elder	Versailles, Troy	2021
2. Cathy Thomas	Ruling Elder	Morehead, Faith	2023
3. Curtis Christian	Teaching Elder	Richmond, First	2023
4. Jerry Utt	Teaching Elder	Versailles, Troy	2023
5. Nik Fegenbush	Ruling Elder	Mt. Sterling	2023

The Closing Commission shall counsel with congregations that have indicated their desire to end their relationship with the Presbyterian Church (U.S.A.) or those that have reached the completion of their effective ministry. This commission shall receive referrals from the Presbytery, the Commission on Congregational Issues or the Coordinating Commission. This commission shall determine a course of action, either division, dismissal, or dissolution, negotiate the terms of such action, and recommend it to the Presbytery for final approval. Such negotiations include consultation with the Administrative (Trustees) Commission.

CONGREGATIONAL ISSUES COMMISSION
Chair, Kathy Riley

1. Jennifer Marsh	Ruling Elder	Corbin	2021
2. Janice Stamper	Teaching Elder	At-Large	2021
3. Scott Cervas	Teaching Elder	Meadowthorpe	2022
4. Kathy Riley	Teaching Elder	Validated Ministry	2022
5. Bill Turner	Ruling Elder	Winchester, Salem	2023

The Congregational Issues Commission will assist congregations with any difficult issues that arise, including conflictual situations and complaints involving the actions of teaching and ruling elders. Formal complaints that rise to the level of a disciplinary case will not be handled by this commission, but will be referred to the Presbytery’s Permanent Judicial Commission. The Congregational Issues Commission also will work with congregations that might need assistance in dealing with concerns related to congregational life that are not conflict situations, but in which outside consultation might be helpful. This commission will work closely with Church Development to help focus resources on congregational health and vitality. In addition, this commission may work closely with the Pastoral Transitions Commission if issues arise in congregations with temporary pastors or that are in transition. The commission will also undertake other responsibilities as assigned by the Presbytery or Coordinating Commission. This commission may recruit, seek additional help and build teams with people not on the commission for short-term projects when necessary.

COMMISSION ON PREPARATION FOR MINISTRY
Chair, Keith Benze

1. Stephen Fearing	Teaching Elder	Lex, Beaumont	2021
2. Ginny Shanda	Ruling Elder	Lex, First	2021
3. Rollin Tarter	Teaching Elder	Retired	2021
4. Linda Kurtz	Teaching Elder	Lex, First	2021
5. Griffin Phillips Ryan	Teaching Elder	London, First	2022
6. Missie Woods	Ruling Elder	Pisgah Versailles	2022
7. Cynthia Pennington	Ruling Elder	Lex., Second	2022
8. Stephen Sanders	Teaching Elder	Prestonsburg	2022
9. Keith Benze	Teaching Elder	Versailles	2023
10. Diehl Ackerman	Ruling Elder	Morehead, Faith	2023
11. David Whiteman	Ruling Elder	Winchester, First	2023
12. Tallu Smith	Ruling Elder	Cynthiana	2023

The Commission on Preparation for Ministry shall be composed of twelve (12) members; half of whom shall be Teaching Elder members of the Presbytery and half of whom shall be elders. The Commission shall fulfill the functions related to the process of preparation for ordination as Teaching Elder and shall provide for the training, and nurture of Ruling Elders who apply to become Commissioned Lay Pastors (CLP’s).

PASTORAL TRANSITIONS COMMISSION

Chair, Lisa Eye
Vice-Chair, Julie Olt

1. Juanita Spangler	Ruling Elder	Whitesburg	2021
2. Julie Olt	Teaching Elder	Cynthiana	2021
3. Bill Reed	Ruling Elder	Lexington, First	2021
4. Janice Stamper	Teaching Elder	At-Large	2022
5. Lisa Eye	Teaching Elder	Corbin	2022
6. Eric Schonblom	Ruling Elder	Buckhorn	2022
7. Jim Gilbert	Teaching Elder	Retired	2023
8. Erin Rouse	Teaching Elder	Validated Ministry	2023
9. Barbara Rogers	Ruling Elder	Lex., Hunter	2023

The Pastor Transitions Commission shepherds a congregation from the moment a Pastoral leader decides to leave, is removed from office or retires until a new leader is formally installed. This commission would be responsible for working with the Session to determine the best course of action for a congregation searching for new, *permanent* leadership, including all the various steps of the PNC process including examining and receiving the new Teaching Elder/CRE, approving any Interim contracts and new terms of call. They would also work on a suggested Installation Commission for the newly called Pastor. The design of this commission would be to create a “turn-key” process to ease the burden, eliminate the confusion and lower the anxiety for congregations in transition. They would also recommend Presbytery minimum terms of call each year after a thorough evaluation of national and local salary trends. This commission shall appoint moderators to Sessions of churches with leadership vacancies due to the search process and other duties assigned by the Presbytery or Coordinating Commission. This commission may recruit, seek additional help, and build teams with people not on the commission for short-term projects when **necessary**.

PERMANENT JUDICIAL COMMISSION

1. Bill Owens	Ruling Elder	Danville	2021
2. Mark Davis	Teaching Elder	Lexington, First	2021
3. Catesby Woodford	Ruling Elder	Mt. Sterling, First	2022
4. Caroline Kelly	Teaching Elder	Danville	2022
5. Kristy Ehlert	Teaching Elder	Validated Ministry	2024
6. David Hoskins	Ruling Elder	Corbin	2026
7. Angie Hatton	Ruling Elder	Whitesburg	2026

In accordance with D-5, the Presbytery shall elect, by nomination from the COR, a Permanent Judicial Commission, as outlined in the *Book of Order*, D-5.0000.

CHRISTIAN FORMATION MINISTRY

Ryan Shrauner _____	Teaching Elder Ruling Elder	Validated Ministry _____	2023 Chair 2022 Vice-Chair
-------------------------------	---------------------------------------	------------------------------------	--------------------------------------

The Christian Formation Ministry shall be comprised of a Chair and Vice-Chair (one being a Teaching Elder, the other being a Ruling Elder). The Chair and Vice-Chair may appoint additional members as needed for the mission of this Ministry, seeking to uphold parity Teaching Elders and members of congregations and honoring the full diversity of the Presbytery in representation. This Ministry shall be responsible for coordinating the Presbytery’s work in strengthening and supporting congregations in their faithful discipleship through Biblical and theological knowledge and spiritual formation and areas of mission including youth, young adults and campus ministry.

CHURCH DEVELOPMENT & REVITALIZATION MINISTRY

Jim Dougans	Ruling Elder	Maysville	2022	Chair
Karen Hartsfield	Teaching Elder	At-Large	2021	Vice-Chair

The Church Revitalization and Development Ministry exists to work with current churches engaging in revitalization and transformation efforts and to promote and encourage the development of new worshipping communities.

LEADERSHIP DEVELOPMENT MINISTRY

Beth Garrod-Logsdon	Teaching Elder	Wilmore	2023	Chair
Melissa Sevier	Teaching Elder	Retired	2021	Vice-Chair

The Leadership Development Ministry would oversee the content and schedule of Leadership Development for the Presbytery. While there is overlap with the area of Christian formation, this group would look at issues of conflict management, leadership, organizational change, and the need for adaptive change process. This group would be tasked with the training, oversight and continued education of Commissioned Ruling Elders. They would also work with newly ordained clergy, Pastors new to the Presbytery and consider developing a coaching program for clergy. This group would provide Sexual Misconduct Prevention Training at regular intervals to insure that all Teaching Elders and employees of Transylvania Presbytery, and any volunteers under the supervision of Transylvania Presbytery, including officers, those serving on its Commissions and Ministries, boards and support of its programs, may be trained every five years

MISSION MINISTRY

Donald Stanley	Teaching Elder	Winchester, Salem	2022	Chair
Lucy Waterbury	Ruling Elder	Richmond-First	2022	Vice- Chair

The Mission Ministry shall be comprised of a Chair and Vice-Chair (one being a Teaching Elder, the other being a Ruling Elder). The Chair and Vice-Chair may appoint additional members as needed for the mission of this Ministry, seeking to uphold parity Teaching Elders and members of congregations and honoring the full diversity of the Presbytery in representation. This Ministry shall seek to strengthen and support congregations in their mission to their communities and to the world, and to assist in coordinating mission opportunities within the Presbytery.

REPRESENTATIVES TO OTHER GOVERNING BODIES AND AGENCIES

COMMISSIONERS TO SYNOD OF LIVING WATERS

Ginny Shanda	Ruling Elder	Lexington, First	2021
Karen Hartsfield	Teaching Elder	At-Large	2021
Jim Dougans	Alternate Ruling Elder	Maysville	2021
Tim Noel	Alternate Teaching Elder	Berea, Whites Mem.	2021

SYNOD OF LIVING WATERS – PERMANENT JUDICIAL COMMISSION

Rachel Anderson	Teaching Elder	Mt. Horeb	2024
-----------------	----------------	-----------	------

SYNOD OF LIVING WATERS –NOMINATING

George Rothwell	Ruling Elder	Winchester, Salem	2021
-----------------	--------------	-------------------	------

**ANNUAL ASSEMBLY OF THE KENTUCKY COUNCIL OF CHURCHES
DELEGATES 2020**

Hank Graddy	Ruling Elder	Pisgah Presbyterian Church, Versailles
Linda Kurtz	Teaching Elder	First Presbyterian Church, Lexington
Lawrence Monroe	Ruling Elder	First Presbyterian Church, Hazard
Michael Ward	Teaching Elder	Walnut Hill Church, Lexington
Lucy Waterbury	Ruling Elder	First Presbyterian Church, Richmond

**Report to Presbytery
Treasurer's Report/Administration Commission
November 14, 2020**

Recommendations to Presbytery

1. A report was received from the Task Group appointed by the Coordinating Commission that worked on analyzing the Presbytery reserves. The Coordinating Commission also reviewed this work. A motion was made and seconded to recommend to Presbytery to undesignate the Church Development/Redevelopment account that is invested at the Presbyterian Foundation that has a balance of \$180,406 and move the funds to the General Account at the Foundation.

At the June 6, 2009, Presbytery meeting, the Presbytery approved an action that designated \$111,756 of the Gleneagles property sale for church development or redevelopment. These funds were invested in a c.d. until 2017 when the funds were moved to the Church Development/Redevelopment account invested at the Presbyterian Foundation. No funds have been withdrawn from this account since that time. The investment has increased by \$59,399 since the initial deposit at the Foundation. This action would give us funding for the current staffing pattern and give the Burnamwood Vision Group time to implement a Burnamwood strategy.

2. The **balanced budget** is being presented to the Presbytery with the following recommendations:
 - a. The Presbytery's portion of total per capita per member be set at \$25.51 per member for 2021. The total per capita per member is \$38.47. This is an increase of 3 cents per member from 2020 because of an increase in the PCUSA increase.
 - b. The distribution of Unified Mission Giving for 2021 be as follows:

Transylvania Presbytery	78%	(same as 2020)
Synod of Living Waters	5%	(same as 2020)
General Assembly	17%	(same as 2020)
 - c. That the 2021 Operating Budget of \$477,000 and the Burnamwood Subsidiary Budget of \$110,000 be adopted.

Information to Presbytery:

- The Treasurer's Report as of September 30, 2020 is attached.
- A per capita and unified giving spreadsheet by church as requested by Presbytery is attached.

Notes from Treasurer's Report

Operating Budget

1. Total Revenue as of 9/30/20 is \$287,704 as compared to \$246,961 at 9/30/19. This is an increase in revenue of \$40,743. This increase includes the SBA payroll funds received of \$46,337.
2. Total Expense as of 9/30/20 is \$272,650 as compared to \$277,416 at 9/30/19. This is a decrease in expense of \$4,766.
3. Total Net for the operating budget as of 9/30/20 is \$15,054 as compared to (\$30,455) at 9/30/19.

Burnamwood Budget

1. Total Burnamwood revenue as of 9/30/20 is \$46,790 as compared to \$128,881 at 9/30/19. This is a decrease in revenue of \$82,091.
2. Total Burnamwood expense as of 9/30/20 is \$74,021 as compared to \$184,186 at 9/30/19. This is a decrease in expense of \$110,165.
3. Total Net for Burnamwood as of 9/30/20 is (\$27,231) as compared to (\$55,305) at 9/30/19.

Actions Taken by Administration Commission since August presbytery meeting:

1. Year-to-date financial reports as of September 30, 2020 were reviewed and approved including reserves, foundation accounts, unified mission and per capita contributions.
2. Approved the 2021 Budget and recommended to presbytery for action.
3. Approved the plan submitted by Palmer Engineering to the Kentucky Department of Water on behalf of the Presbytery on July 28th. The permit was approved by the state on September 14, 2020.
4. Approved the request from the United Presbyterian Church of Harrodsburg to sell the property at 101 Mooreland Ave., Harrodsburg, Kentucky (known as the Academy Building) without the normally required appraisal. The motion to approve included a notation that members' agreement to allow the sale, without the usual requirement for an appraisal, was based on the congregation having already received what it believed to be a fair bid; the need for costly restoration in compliance with historic building guidelines; and the understanding that the offer comes from reputable buyers in the community who have renovated and restored other historic buildings in Harrodsburg. This sale also will unencumber the small church and members from the continual upkeep and maintenance on a building that is not fulfilling a current mission of the church.
5. Approved a contract with Lagco, Inc. to begin work on the Camp Burnamwood dam. Palmer Engineering received construction bids on behalf of the Presbytery for the Camp Burnamwood Dam Principle Spillway Replacement on or prior to the October 15, 2020 bid opening. All bids were checked and tabulated for this project. The qualifications of the low bidder were reviewed. The low bidder appears appropriate for the work identified and the low bidder appears capable of performing all work required to complete the project. Based on the review by Palmer Engineering of the bidder and their bid, the contract was awarded to Lagco, Inc. for \$53,262. Lagco expects construction to take 3-4 weeks, with pipe installation and material compaction taking 1-2 weeks. The construction project will begin on November 2, 2020.

Presbytery of Transylvania					
Treasurer's Report					
September 30, 2020					
	2020	2020	2019	2019	2020 ACTUAL
	ANNUAL	TOTAL REVENUE	TOTAL REVENUE	TOTAL REVENUE	COMPARED TO
	BUDGET	JAN-SEPT	JAN-SEPT	JAN-DEC	2019 ACTUAL
INCOME					(decrease in revenue)
UNIFIED GIVING - Presbytery Share	140,000	80,798	79,300	142,525	1,498
PER CAPITA	167,575	82,447	91,936	159,993	(9,488)
OTHER RECEIPTS					
TRUST FUNDS	32,000	16,098	22,111	84,507	(6,013)
OTHER RECEIPTS/DESIGNATED ACCTS	137,825	108,361	53,615	101,578	54,745
TOTAL OTHER RECEIPTS	169,825	124,458	75,726	186,085	48,732
TOTAL INCOME	477,400	287,703	246,961	488,603	40,742

Presbytery of Transylvania					
Treasurer's Report					
September 30, 2020					
	2020	2020	2019	2019	2020 ACTUAL
	ANNUAL	TOTAL EXPENSE	TOTAL EXPENSE	TOTAL EXPENSE	COMPARED TO
EXPENSES	BUDGET	JAN-SEPT	JAN-SEPT	JAN-DEC	2019 ACTUAL
					(decrease in expenses)
COMMISSIONS AND MINISTRIES					
ADMINISTRATION	1,000	0	11	11	(11)
BURNAMWOOD	50,000	37,500	52,500	70,000	(15,000)
CHRISTIAN FORMATION	32,400	3,611	8,846	29,405	(5,235)
CHURCH DEVELOPMENT/REDEVELOPMENT	21,000	92	1,045	1,143	(953)
CONGREGATIONAL ISSUES	2,000	0	0	-	0
COORDINATING COMMISSION	8,000	905	490	1,450	416
LEADERSHIP DEVELOPMENT	15,000	6,159	9,202	13,411	(3,043)
MISSION MINISTRY	12,000	1,000	0	11,368	1,000
PASTORAL TRANSITIONS COMMISSION	20,000	16,220	6,413	7,586	9,807
PREPARATION FOR MINISTRY	15,000	14,048	4,385	5,113	9,663
REPRESENTATION	200	0	0	-	0
YOUTH COUNCIL	5,000	0	0	-	0
TOTAL COMMITTEES	181,600	79,535	82,892	139,488	(3,357)
SUPPORT FUNCTIONS					
PERSONNEL	244,500	167,831	175,677	236,911	(7,846)
OFFICE OPERATIONS	30,000	10,692	11,181	19,321	(489)
COMMUNICATIONS	2,500	887	1,253	1,707	(366)
PRESBYTERY OFFICES	4,800	7,543	1,717	3,115	5,827
TOTAL SUPPORT FUNCTIONS	281,800	186,953	189,828	261,054	(2,874)
OTHER					
KY COUNCIL OF CHURCHES	4,000	2,500	1,500	3,420	1,000
PRESBYTERY MEETINGS	7,000	1,412	1,697	2,639	(285)
PRESBYTERIAN WOMEN	3,000	2,250	1,500	3,000	750
TOTAL OTHER	14,000	6,162	4,697	9,059	1,465
TOTAL EXPENSES	477,400	272,650	277,416	409,601	(4,766)
INCOME YEAR-TO-DATE					
	477,400	287,703	246,961	488,603	
EXPENSES YEAR-TO-DATE					
	477,400	272,650	277,416	409,601	
DIFFERENCE	0	15,053	(30,455)	79,003	

Camp Burnamwood Subsidiary Budget					
September 30, 2020					
	2020 ANNUAL BUDGET	2020 TOTAL JAN-SEPT	2019 TOTAL JAN-SEPT	2019 TOTAL JAN-DEC	2020 ACTUAL COMPARED TO 2019 ACTUAL
INCOME					(decrease in revenue)
Unified for Burnamwood	50,000	37,500	52,500	70,000	(15,000)
Burnamwood Gifts	40,000	6,665	23,411	54,725	(16,746)
Burnamwood SummerCampFees	0	0	30,505	32,373	(30,505)
Burnamwood YouthRetreatFees	0	0	2,484	2,484	(2,484)
Burnamwood Presby Rentals	12,000	785	936	11,189	(151)
Burnamwood Other Rentals	8,000	2,490	5,730	7,620	(3,240)
Burnamwood Appalachian Ministry	0	(650)	13,115	13,765	(13,765)
Burnamwood Gala	0	0	200	200	(200)
TOTAL INCOME	110,000	46,790	128,881	192,356	(82,091)
EXPENSES					(decrease in expense)
ADMINISTRATIVE	8,300	4,916	6,981	9,024	(2,065)
PERSONNEL	34,448	25,836	91,984	105,116	(66,148)
FOOD SERVICE	0	0	17,168	17,683	(17,168)
FACILITIES	67,252	43,269	55,802	70,729	(12,533)
SUMMER PROGRAM	0	0	2,238	2,238	(2,238)
RETREATS	0	0	0	0	-
FUNDRAISING EXPENSES	0	0	914	914	(914)
BAM EXPENSE	0	0	9,098	9,098	(9,098)
TOTAL EXPENSES	110,000	74,021	184,186	214,803	(110,165)
INCOME YEAR-TO-DATE	110,000	46,790	128,881	192,356	
EXPENSES YEAR-TO-DATE	110,000	74,021	184,186	214,803	
DIFFERENCE	0	(27,231)	(55,305)	(22,447)	

Reserves as of 9/30/20

Designated Accounts for Specific Purposes

Caldwell Campbell for First Presbyterian of Richmond	36,316
Church Development/Redevelopment	180,406
Greenway funds	1,192,099
Harmony Cemetery	8,173
John F White fund to be used for Whites Memorial and indigent ministers	681,261
Mec Lona Davis to be used for Guerrant Memorial	242,201
Nicholasville Redevelopment fund	255,738
Campus Ministry funds held by Foundation	162,716
Total Designated Accounts for Specific Purposes	2,758,910

Undesignated Accounts

General Fund	166,066
412 Rose Street (Proceeds from Sale of Rose Street Property)	167,711
Chase Operating Account	65,405
Total Accounts Available for Operating and Reserves	399,182

Designated Funds that are in General Accounts 154,580

Total Undesignated Presbytery Reserves 244,602

Estimate of Needed Operating Reserves (4 Months of Expenses) 159,133

**Presbytery of Transylvania
Treasurer's Report**

**SPECIAL OFFERINGS
September 30, 2020**

	Amount Received from Churches
GENERAL ASSEMBLY CAUSES	
GA Disaster Assistance	3,350
GA Hunger	2,629
GA Joy Gift	3,588
GA Missionaries/Extra Commitment Opportunities	13,516
GA One Great Hour	10,365
GA Peace & Global Witness	622
GA Pentecost	2,342
GA Theological Education	225
TOTAL GA CAUSES	36,637
SYNOD CAUSES	
SLW Living World Offering	872
SLW Louisville Seminary	2,500
SLW Peace & Global Witness	160
TOTAL SYNOD CAUSES	3,532
PRESBYTERY CAUSES	
Buckhorn Children's Center	4,991
Bellewood Children's Center	599
Westminster Village	1,010
TOTAL PRESBYTERY CAUSES	6,600
TOTAL SPECIAL OFFERINGS	46,769

Unified/Per Capita Spreadsheet by Church

CHURCH	LOCATION	2020 Per Capita	Per Capita Received 9/30/20	2020 Projected Unified	Unified Received 9/30/20	2021 Per Capita
Community Presbyterian Church of Bellefonte	Ashland	961				961.75
First Presbyterian Church	Ashland	4,574	3,431			4,577.93
Normal Presbyterian Church	Ashland	1,192	1,192			1,000.22
Augusta Presbyterian Church	Augusta	2,114				2,115.85
Sharon Presbyterian Church	Augusta	461				461.64
McGuire Mem'l Presbyterian Church	Beattyville	769	538			769.40
White's Mem'l Presbyterian Church	Berea	577	769	4,000	4,000	577.05
Doermann Mem'l Presbyterian Church	Blackey	1,076				1,077.16
Cow Creek Presbyterian Church	Booneville	1,422				1,423.39
First Presbyterian Church	Booneville	2,960				2,962.19
Buckhorn Lake Area Church	Buckhorn	1,960	1,960	2,400	1,000	1,731.15
Highland Presbyterian Church	Canada	807				807.87
Carlisle Presbyterian Church	Carlisle	2,114	1,586			1,961.97

Unified/Per Capita Spreadsheet by Church

CHURCH	LOCATION	2020 Per Capita	Per Capita Received 9/30/20	2020 Projected Unified	Unified Received 9/30/20	2021 Per Capita
Cawood Presbyterian Church	Cawood	653				653.99
Corbin Presbyterian Church	Corbin	2,960	2,235			2,885.25
Cynthiana Presbyterian Church	Cynthiana	5,497				5,616.62
The Presbyterian Church	Danville	12,224	9,169	12,000	9,000	11,848.76
United Presbyterian Church	Ezel	1,076	1,076		65	1,077.16
First Presbyterian Church	Flemingsburg	769				769.40
United Presbyterian Church	Frenchburg	692				653.99
First Presbyterian Church	Georgetown	5,766	2,883	1,200	600	5,655.09
Bayless Memorial Presbyterian Church	Grayson	1,076	1,076			615.52
Greenup Presbyterian Church	Greenup	1,230				1,231.04
First Presbyterian Church	Harlan	1,038	1,038			1,038.69
United Presbyterian Church	Harrodsburg	2,998	1,653			2,846.78
First Presbyterian Church	Hazard	4,651				3,077.60

Unified/Per Capita Spreadsheet by Church

CHURCH	LOCATION	2020 Per Capita	Per Capita Received 9/30/20	2020 Projected Unified	Unified Received 9/30/20	2021 Per Capita
Hull Memorial Presbyterian Church	Hazard	461	461			230.82
Anna C. Brush Mem'l Presbyterian Church	Hyden	692				692.46
Isom Presbyterian Church	Isom	1,153	1,192			1,192.57
Guerrant Memorial Presbyterian Church	Jackson	1,153	1,153			1,154.10
First Presbyterian Church	Lancaster	2,191	2,191			2,115.85
First Presbyterian Church	Lawrenceburg	769				653.99
Beaumont Presbyterian Church	Lexington	5,228	2,614	1,125	1,125	5,078.04
Bethel Presbyterian Church	Lexington	423				461.64
Eastminster Presbyterian Church	Lexington	1,499	1,124			1,384.92
First Presbyterian Church	Lexington	23,717	17,789			23,735.99
Hunter Presbyterian Church	Lexington	7,035	4,500	10,000	5,833	5,270.39
Korean Presbyterian Church	Lexington	2,729				2,885.25
Maxwell Street Presbyterian Church	Lexington	20,181	9,732			19,119.59

Unified/Per Capita Spreadsheet by Church

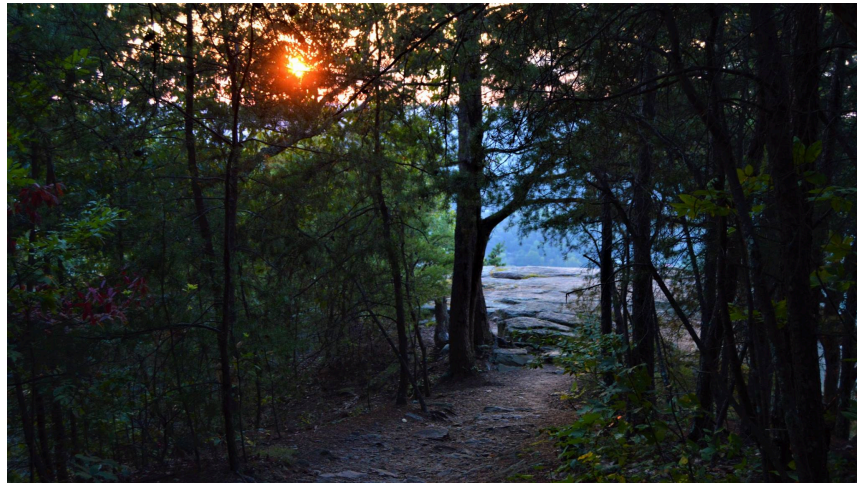
CHURCH	LOCATION	2020 Per Capita	Per Capita Received 9/30/20	2020 Projected Unified	Unified Received 9/30/20	2021 Per Capita
Meadowthorpe Presbyterian Church	Lexington	2,268	1,800	5,000	3,750	2,115.85
Mt. Horeb Presbyterian Church	Lexington	2,652	1,900	200	200	2,654.43
Second Presbyterian Church	Lexington	27,254	20,441	56,396	43,178	26,967.47
Walnut Hill Presbyterian Church	Lexington	5,689		500		5,693.56
First Presbyterian Church	London	2,806	2,105			2,731.37
Manchester Presbyterian Church	Manchester	384				384.70
Mays Lick Presbyterian Church	Mayslick	154				153.88
First Presbyterian Church	Maysville	4,228	2,114	3,000	1,500	4,424.05
First Presbyterian Church	Middlesboro	1,038				730.93
Midway Presbyterian Church	Midway	2,422		4,000		2,539.02
First Presbyterian Church	Millersburg	692	692			692.46
Faith Presbyterian Church	Morehead	1,230	1,230	100	270	1,307.98
First Presbyterian Church	Mt. Sterling	4,613	3,075	1,726	1,135	4,462.52

Unified/Per Capita Spreadsheet by Church

CHURCH	LOCATION	2020 Per Capita	Per Capita Received 9/30/20	2020 Projected Unified	Unified Received 9/30/20	2021 Per Capita
Old Paint Lick Presbyterian Church	Paint Lick	653	1,307			653.99
First Presbyterian Church	Paris	1,960				1,654.21
Hopewell Presbyterian Church	Paris	192				2,038.91
Perryville Presbyterian Church	Perryville	346		300		346.23
First Presbyterian Church	Pikeville	1,269	1,269			1,538.80
First Presbyterian Church	Prestonsburg	3,536	2,308			3,693.12
First Presbyterian Church	Richmond	9,264	6,062	30,000	22,500	9,040.45
New Providence Presbyterian Church	Salvisa	769				769.40
Old Springfield Presbyterian Church	Sharpsburg	1,076				1,077.16
First Presbyterian Church	Somerset	6,958	4,700			7,116.95
Pisgah Presbyterian Church	Somerset	999				1,000.22
Stanford Presbyterian Church	Stanford	4,036	2,018	500		4,039.35

Unified/Per Capita Spreadsheet by Church

CHURCH	LOCATION	2020 Per Capita	Per Capita Received 9/30/20	2020 Projected Unified	Unified Received 9/30/20	2021 Per Capita
Pisgah Presbyterian Church	Versailles	7,996	5,997			8,309.52
Troy Presbyterian Church	Versailles	2,806	1,384	6,738	3,369	3,039.13
Versailles Presbyterian Church	Versailles	10,456	6,970			10,425.37
Graham Memorial Presbyterian Church	Whitesburg	3,575	3,575	1,200	1,200	3,539.24
Wilmore Presbyterian Church	Wilmore	2,076	1,038	1,000	500	2,231.26
First Presbyterian Church	Winchester	5,920	5,920			6,116.73
Salem Presbyterian Church	Winchester	884	884	900	900	884.81
Receipts from Individuals				4,000	2,700	
GRAND TOTALS		252,512	146,150	146,285	102,825	244,746.14
Presbytery Portion		167,575	82,447	114,102	80,798	162,294.62



The Presbytery of Transylvania

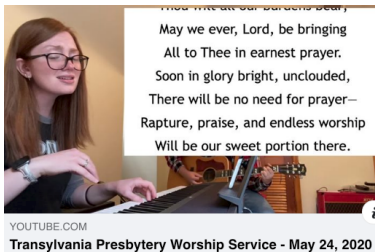
2021 Narrative Budget



Doing Justice, Loving Mercy,
Walking Humbly With God
First Presbyterian Church of
Richmond, June 2020



Kate Copley, member of Maxwell
Street, serving Thursday Night
Meals-Covid Edition.



Presbytery holds its first Presbytery-
wide online worship service,
May 24, 2020



Scot Robinson of First Pikeville
East Kentucky Presbyterian
Collaborative Worship Service
April 26, 2020

The Presbytery of Transylvania

2021 Narrative Budget

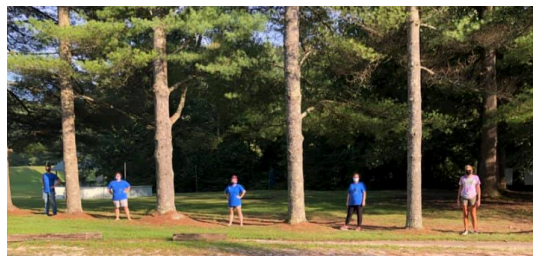
Greetings in the name of our Lord!

The 2021 Narrative Budget of the Presbytery of Transylvania seeks to share some of the news of the commissions and ministries of the Presbytery in pictures and words.

Over the past few years, the Presbytery has been focused on taking what we have done very well and building on that success to better serve our churches in their quest to fulfill God's mission in their specific communities.

We have:

- Focused our energy on helping churches in transition find great pastoral leadership.
- Begun a CLP Training program to train candidates in areas necessary for pastoral leadership, including introductions to both Biblical testaments, preaching, Reformed worship and sacraments, pastoral care, Presbyterian polity, Reformed theology, Christian education, and sexual misconduct prevention. This training will take place over two to three years, at events conducted within the presbytery.
- Continued to work on a sustainability plan for Camp Burnamwood.
- Begun working to develop a new ministry in Nicholasville.
- Given many Mission Grants to congregations in support of their local mission.
- Supported numerous candidates and inquirers through the process of seeking a call as Ministry of Word and Sacrament.
- Participated faithfully in our Synod's Living Waters for the World mission.
- Supported and funded Mission on a national and global level.
- Supported the work of Presbyterian Disaster Assistance.
- Funded a grant for each of our churches during the pandemic.
- And much, much more.

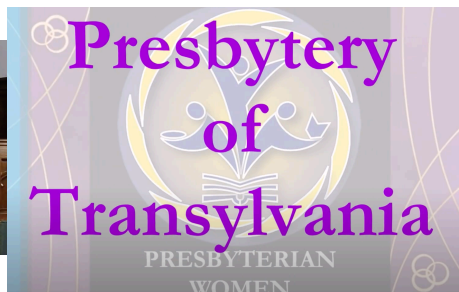


First Presbyterian Church of Winchester wraps up 2020 VBS with a day outside at Burnamwood (using distancing, masks, and lots of hand sanitizer).

These are just a few of the things we're doing *together*.



Candace Moberly
Co-Moderator



Jennifer Brubaker
Co-Moderator

Candace Moberly, Ruling Elder of Whites Memorial Presbyterian Church and Jennifer Brubaker of First Presbyterian Church of Richmond lead the first Virtual PW of Transylvania Fall Gathering!

It is so exciting to see the new things that God is doing in this time of great change. Yes, it is a little unnerving at times! Yet it is exhilarating to see how we are partnering together to strengthen and support our 71 congregations in Central and Eastern Kentucky.

The purpose of our Narrative Budget is to give everyone an idea of how the Presbytery spends \$477,000. It's a large amount of money, but we all consider it an investment in doing God's good work in partnership with one another "Across the Woods".

We encourage you to reflect on the amount devoted to each ministry in relation to the many programs and activities offered for the benefit of everyone in the presbytery. And, of course, we trust you will pray about your financial support of the presbytery and what an important difference your regular, meaningful contributions make to the present and future potential of our church family.



First Presbyterian Church of Harlan holds an in-person, outside worship service. September 27, 2020

We hope your session will consider ways to remit per capita and that your session would consider a Unified Mission Giving pledge as a part of your mission budget. This form of giving magnifies your gift locally, nationally and globally. It goes to support local mission projects, Burnamwood, Presbyterian Disaster Assistance, mission co-workers, Living Waters for the World, immigrant services and so much more. We are sincerely grateful for every gift you make.

We hope you receive this narrative budget in the spirit it is offered. Look at the pictures, reflect on the pie charts, and read the ways in which God is at work among us. This narrative budget tells the story of how your gifts are impacting people and churches. We hope to continue to find ways to support each other in the ministry in our neighborhood and beyond. We are stronger together!

Administration Commission

Susan Warren, Honorably Retired
Ted Kuster, First Presbyterian Church, Paris
Rachel Mathews, Maxwell Street Presbyterian Church
Jim Olive, First Presbyterian Church, Georgetown
Jeb Pinney, First Presbyterian Church, Mt. Sterling
Sara Benedetti, Presbytery Treasurer and Commission Member
Philip Lotspeich, General Presbyter



Rev. Susan Warren leads First Presbyterian Church of Lawrenceburg with online worship and communion. September 5, 2020.



First London hosts its Immediate Needs Pantry on July 8, 2020. The church opens its Food Pantry each Wednesday morning to provide to the community.

Support Presbytery's Mission by making a donation
online at: <https://transypby.org/paypal/>

MISSION STATEMENT

God calls Transylvania Presbytery to support and encourage the mission of God in the particular context of the congregations and communities in which we have been called to serve as the body of Christ. Recognizing that we are a body of diverse members connected by our common bond in Jesus Christ and empowered by the Holy Spirit, we strive to work together to...

WITNESS to the love of the triune God by what we say and do;

NURTURE all who are called to follow Christ, and

SERVE all people impartially, recognizing that all we have and all we are belongs to God.



Members of First Presbyterian Church of Maysville put together VBS in a bag.



Rev. Dr. Hyeon Gu Lee, pastor of Lexington Korean Presbyterian Church, wears a mask and makes a heart with his hands to show love for neighbors during the COVID-19 pandemic.



Sheena Roller of Beaumont Presbyterian Church shares a Godly Play video for Pentecost.

Recommendations to Presbytery

The **balanced budget** is being presented to the Presbytery with the following recommendations:

- 1. The Presbytery's portion of total per capita per member be set at \$25.51 per member for 2021. The total per capita per member is \$38.47.**
- 2. The distribution of Unified Mission Giving for 2021 be as follows:**

Transylvania Presbytery	78%	(same as 2020)
Synod of Living Waters	5%	(same as 2020)
General Assembly	17%	(same as 2020)
- 3. That the 2021 Operating Budget of \$477,000 and the Burnamwood Subsidiary Budget of \$110,000 be adopted.**



Wilmore Presbyterian Church responds to the need for masks.



Rev. Jose Luis Casal leads First Presbyterian Church of Paris in an online Zoom worship service.



Pisgah Presbyterian Church of Versailles hosts a much needed S'mores Night!

SOURCES OF FUNDING

Per Capita \$244,746

- Per capita is a covenant commitment for all communicant members of the Presbyterian Church through the governing bodies to participate equally, responsibly, and independently by sharing the cost of coordination and evaluation of mission.
- Per capita funds help to fund ecclesiastical, legislative, and judicial functions that identify a Reformed church, while at the same time strengthening the sense of community among all Presbyterians.
- The payment of the per capita apportionment can be seen as a sign of healthy relationships within the church, giving tangible witness to the unity and wholeness promised to us in Jesus Christ.
- The per capita assessment was instituted and still exists to help cover the fixed costs of operating our Church.
- The assessment is not used to fund mission programs, either on a national or Presbytery level: Rather, it exists solely to assist in the payment of the basic necessities of our institutional existence.
- The recommended 2021 per capita is \$38.47 per member. Of this amount, \$8.98 per member is forwarded to our national church offices, \$3.98 per member is forwarded to our Synod, and \$25.51 per member stays in Transylvania Presbytery.

Year	Total Per Capita Revenue	Presbytery Per Capita Revenue	Synod Per Capita Revenue	PCUSA Per Capita Revenue
2020	\$252,512	\$167,575	\$26,145	\$58,793
2021	\$244,746	\$162,295	\$25,321	\$57,131

2021 Per Capita Apportionment

Presbytery	\$25.51
Synod	\$ 3.98
General Assembly	\$ 8.98
Total Per Member	\$38.47

Unified Mission Contributions \$179,487

Why give to Unified Mission? Because we believe in the Presbyterian Church (USA) “brand” of the Christian household of faith, and wish to express our discipleship through the giving channels provided by the Presbytery, Synod and General Assembly. Our unified mission dollars support missionary salaries and benefits, gifts or grants to ecumenical agencies, overseas partners [churches, hospitals, schools], resources and services to congregations and mission governing bodies. So what happens to the unified mission giving sent to the Presbytery?

- 78% is kept in the Presbytery
- 5% is sent to the Synod
- 17% is sent to General Assembly

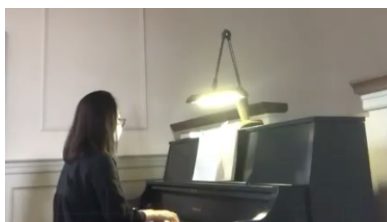
These percentages are set by action of Presbytery each year at the last Presbytery meeting of the year.

Interest from Investments and Designated Accounts/Reserves \$175,106

This budgeted revenue includes interest and dividends on designated funds, which support Presbytery operations, designated funds to support ministers in need, designated funds to support church redevelopment, leadership development and campus ministry.



The Presbyterian Church of Danville's socially-distanced bell choir.
September 23, 2020



Hyunjin Kwak, of Hunter Presbyterian Church, playing “Oh Sing to the Lord” arranged by Mark Sedio.,
September 11, 2020.



Rev. Mark Davis of First Presbyterian Church in Lexington discusses what it means to be a Presbyterian.
September 15, 2020

USES OF FUNDS

Our congregations count on the Presbytery to support pastors, sessions, and congregations in times of pastoral transition and conflict, to provide oversight to inquirers and candidates coming from our churches, to administer funds received and given through the Presbytery and to communicate regularly and effectively using electronic, print and social media. The Presbytery has committed itself to providing leadership and guidance to the congregations in carrying out its mission and adopted the following strategies of the Long Range Plan in January of 2015.

- Form and nurture “neighborhoods” of congregations based on shared passion and missional affinity.
- Encourage the strengthening of small congregations.
- Restructure Presbytery meetings for increasing effectiveness.
- Establish Technology Stations throughout the Presbytery to enable relationships and broaden participation.
- Support Camp Burnamwood’s Mission.
- Continuously communicate the Presbytery’s mission and successes with its members.
- Reshape staff roles and responsibilities to align with recommendations and strategies.

Commissions and Ministries of the Presbytery \$183,100

Administrative Commission \$1,000

The Administrative Commission serves as the Trustees of the Presbytery, and has the responsibility for accounting, budgeting and staff services for the presbytery. The Commission reviews and monitors the financials of the presbytery on a monthly basis, develops the presbytery budget and provides annual reviews for the staff.

Camp Burnamwood \$50,000

The Burnamwood budget is a subsidiary budget of the Presbytery’s operating budget. Unified mission dollars from the Presbytery’s operating budget are used to supplement the operation of Camp Burnamwood. By providing a positive and energetic 500-acre environment in Central Appalachia, we are dedicated to aid in the spiritual development of children, youth, and adults. Beginning in 2020, the camp entered a sabbatical time of limited activity on the grounds, giving the Burnamwood Visioning Task Group time to assess its sustainability and the best use of facilities. A preliminary report is expected early in 2021.



Christian Formation Ministry \$32,400

The Christian Formation Ministry coordinates the Presbytery’s work in strengthening and supporting congregations in their faithful discipleship through Biblical and theological knowledge, a commitment to stewardship and spiritual formation. Throughout the year, the Christian Formation Ministry provides for educational opportunities in the presbytery such as the Calvin Event, workshops at presbytery meetings, Youth Triennium, stewardship events and funding for campus ministry in the Presbytery.

Church Revitalization & Development Ministry \$21,000

The Church Revitalization & Development Ministry discerns opportunities for new worshipping communities and functions to assist current congregations and pastors in the areas of church growth and evangelism. The CRD offers assistance with the New Beginnings program to churches. In April of 2019, the Presbytery began work with the Phila Consulting Group to help churches catch a vision for what is possible and to discern mission plans for intentional new initiatives in our Presbytery.



First Presbyterian Church of Somerset members worship in the park.
September 27, 2020



On March 12, 2020, Rev. John Leggett and pastors of Second Presbyterian Church, began sharing daily video messages as we entered a time of staying "healthy at home."



Progress continues on Cynthiana’s new West entrance renovation.
September 27, 2020

Commission on Preparation for Ministry \$15,000

The Commission on Preparation for Ministry fulfills the functions related to the process of nurturing Inquirers and Candidates for Ordination as Teaching Elders, including assistance in vocational discernment and guidance in the policies and procedures of the PC(USA) and the Presbytery.

Commission on Representation \$200

The Commission on Representation is charged with the responsibility of Nominating. The COR nominates to the Presbytery a Moderator, a Vice-Moderator and a Treasurer, members of the standing Commissions, the Chairs and Vice-Chairs of all the Commissions and Ministries, members at large of the Coordinating Commission, Commissioners to other councils of the church, and representatives to boards and agencies. The COR advises the Coordinating Commission with respect to its membership and the membership of all Presbytery Commissions and Ministries, groups, and entities, including boards and agencies, to ensure fair and effective representation in the decision making bodies of the Presbytery.

Congregational Issues Commission \$2,000

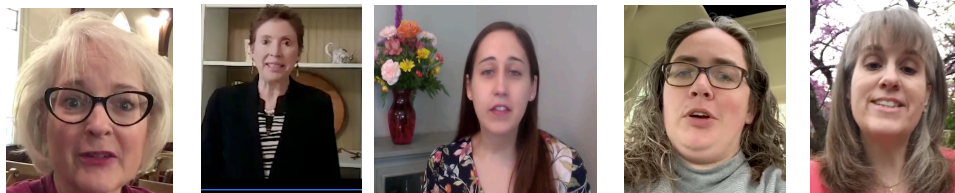
The Congregational Issues Commission assists congregations with any difficult issues that arise, including situations of conflict and complaints involving the actions of teaching and ruling elders.

Coordinating Commission \$8,000

The Coordinating Commission sets forth mission directions, goals, objectives and priorities as it is guided by the Presbytery's Mission Statement, regularly reviews the Presbytery's Mission Statement, coordinates the work of the Presbytery between its meetings and ensures that the decisions made by the Presbytery are carried out.

Leadership Development Ministry \$15,000

The Leadership Development Ministry oversees the content and schedule of Leadership Development for the Presbytery. The Leadership Development Ministry looks at issues of conflict management, leadership, organizational change, and the need for adaptive change process. This group is tasked with the training, oversight and continued education of Commissioned Ruling Elders. It works with newly ordained clergy and pastors new to the Presbytery and is in the process of developing a coaching program for clergy. The Leadership Development Ministry provides opportunities for Sexual Misconduct Prevention Training to insure that all Teaching Elders and employees are trained every five years.



Mission Ministry \$12,000

The Mission Ministry provides resources and training to educate and inform congregations about mission opportunities within the local community and worldwide.

The ministry strives to connect

congregations within the Presbytery that may have common mission interests and goals; promotes and informs congregations of denominational special offerings and programs for mission; coordinates mission initiatives within or beyond the Presbytery, in particular in times of disaster and difficulty, so that the particular contributions of the Presbytery's congregations can more efficiently be distributed and then reported and shared throughout the Presbytery. The ministry provides opportunities for congregations to apply annually for hunger and peacemaking grants. Besides the use of unified funds that are provided, the Mission Ministry is also able to provide grants to our congregations by using designated contributions for hunger and peacemaking each year. In 2019, grants were issued using \$20,817 of designated and unified mission funds. These grants supported the following projects in the Presbytery:

Danville's "Grace Café, Ezel's "Loaves and Fishes", First Georgetown's "Amen House" and "Summer Reading Program", Jackson's "Interfaith of Breathitt County", First London's "Food Pantry", Second's "Canaan House", "A Cup of Joe" and Westminster Village programs, First Somerset's "Hold U Over Boxes", Stanford's "Barley Basket", and Backpack Ministries in Ashland and Midway.

Our very own Presbyterian leaders participated with different faiths & denominations in a video that was broadcast across Kentucky. The best way to celebrate your faith is to protect your neighbor by staying [#HealthatHome](#).

Rev. Julie Olt, Cynthiaana Presbyterian Church
Rev. Melissa Bane Sevier, Honorably Retired
Rev. Linda Kurtz, First Presbyterian Church of Lexington
Rev. Hannah McIntyre, Pisgah Presbyterian Church of Versailles
Rev. Kristy Ehlert, Chaplain at St. Joseph Hospital
April 11, 2020

Pastoral Transitions Commission \$20,000

The Pastoral Transitions Commission shepherds a congregation from the moment its pastoral leader decides to leave until a new leader is formally installed. This commission works with the Session to determine the best course of action for a congregation searching for new, permanent leadership, including advising about the processes for calling the various designations for pastors and teaching elder/CREs. The design of this commission is to create a “turn-key” process to ease the burden, eliminate the confusion and lower the anxiety for congregations in transition.



Youth Council \$5,000

The Youth Council develops and implements programs for youth and their leaders in the Presbytery. The Youth Council provides and promotes Presbytery-wide youth events.

Other Support \$14,000

Presbyterian Women \$3,000

Presbyterian Women affirms women's calls to leadership and serves as a coordinating link for women in our congregations, Presbytery and Synod. The organization implements a yearly program and supports the mission of the Presbyterian Church (U.S.A.) worldwide through education, interpretation and global awareness.

Kentucky Council of Churches \$4,000

The Kentucky Council of Churches is an organization made up of sixteen Christian traditions: one family of faith in the Commonwealth of Kentucky since 1865.

Presbytery Meetings \$7,000

The Presbytery meeting is a primary mechanism for communication and connection. We strive to facilitate necessary business in a time-effective manner, using good processes that limit business to an appropriately minimal amount of time, during which items needing action are presented, discussed, and put up for a vote. We strive to build relationships across neighborhoods at presbytery gatherings, enhancing these through intentional conversations and activities. The Presbytery celebrates the Eucharist at every meeting and shares a meal and a time for fellowship and conversation. Our current custom is to worship together at each presbytery meeting with a focus on Spirit-filled, Christ-centered worship. Occasionally, speakers who can lead us in worship and provide leadership development through workshops and seminars are provided at presbytery meetings.



Leaders of the member bodies of KY Council of Churches support emergency actions to stop the spread of Covid-19.

Personnel Expense \$242,600

Rev. Philip Lotspeich, General Presbyter philip.lotspeich@transyby.org

Provides proactive visionary leadership, works on implementing the Long Range Plan of the Presbytery, works with the Presbytery to ensure the health and vitality of each congregation, provides effective management of the Presbytery, serves the larger church at the Synod and GA levels and communicates the Presbytery’s vision and mission.

Rev. Jerry L. Utt, II, Stated Clerk statedclerk@transyby.org

Performs duties required as Corporate Secretary and Process Agent of the Presbytery, serves as parliamentarian at all the Presbytery meetings, consults with and resources Pastors and Sessions as requested, gives due notice of all stated and called meetings of the Presbytery, maintains and distributes all appropriate documents and serves as recording secretary of Coordinating Commission.

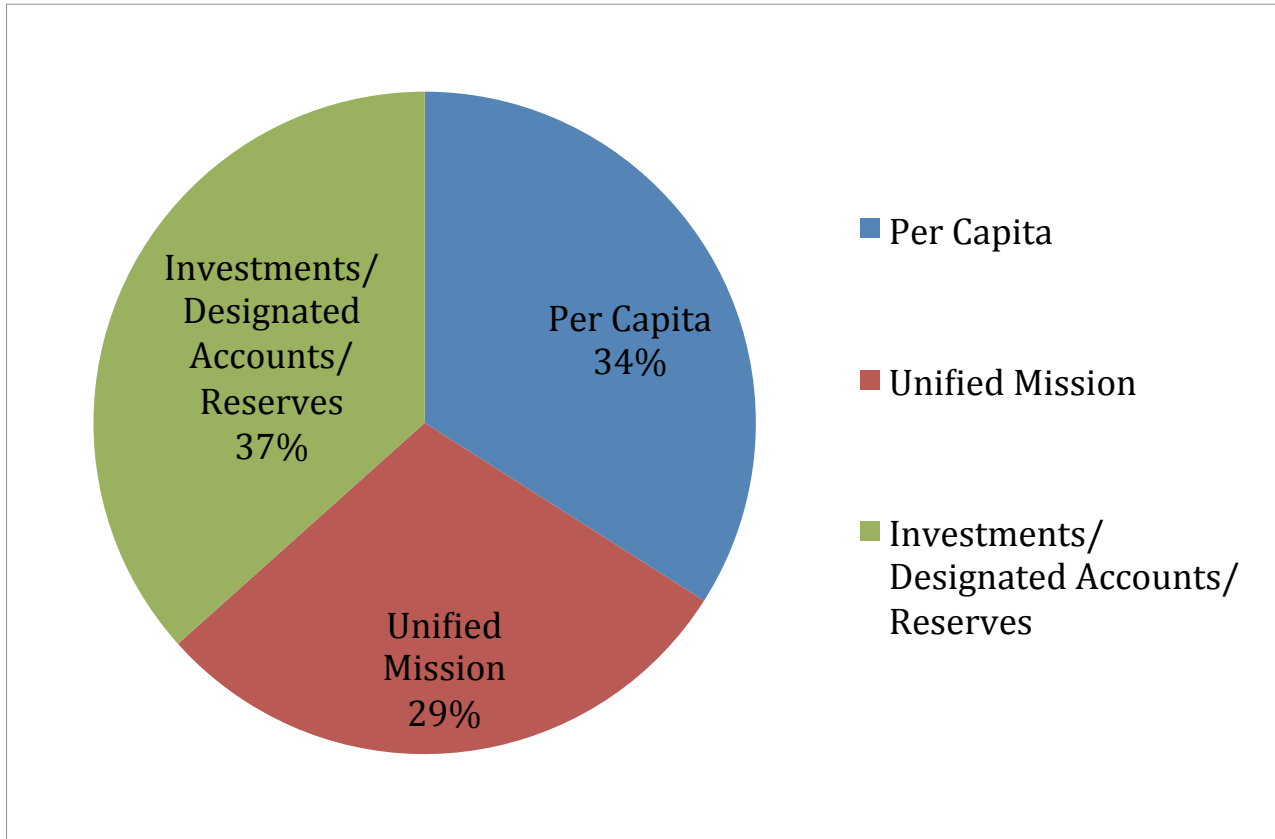
Robyn Justus, Business Manager/Bookkeeper rjustus@transyby.org

Provides for general management of the business affairs of the Presbytery, serves as a staff resource and financial consultant to the treasurer, staff and committees of the presbytery, serves as administrator of office functions, bookkeeping, accounting, computer operations, acts as property administrator and serves as liaison to the Board of Pensions.

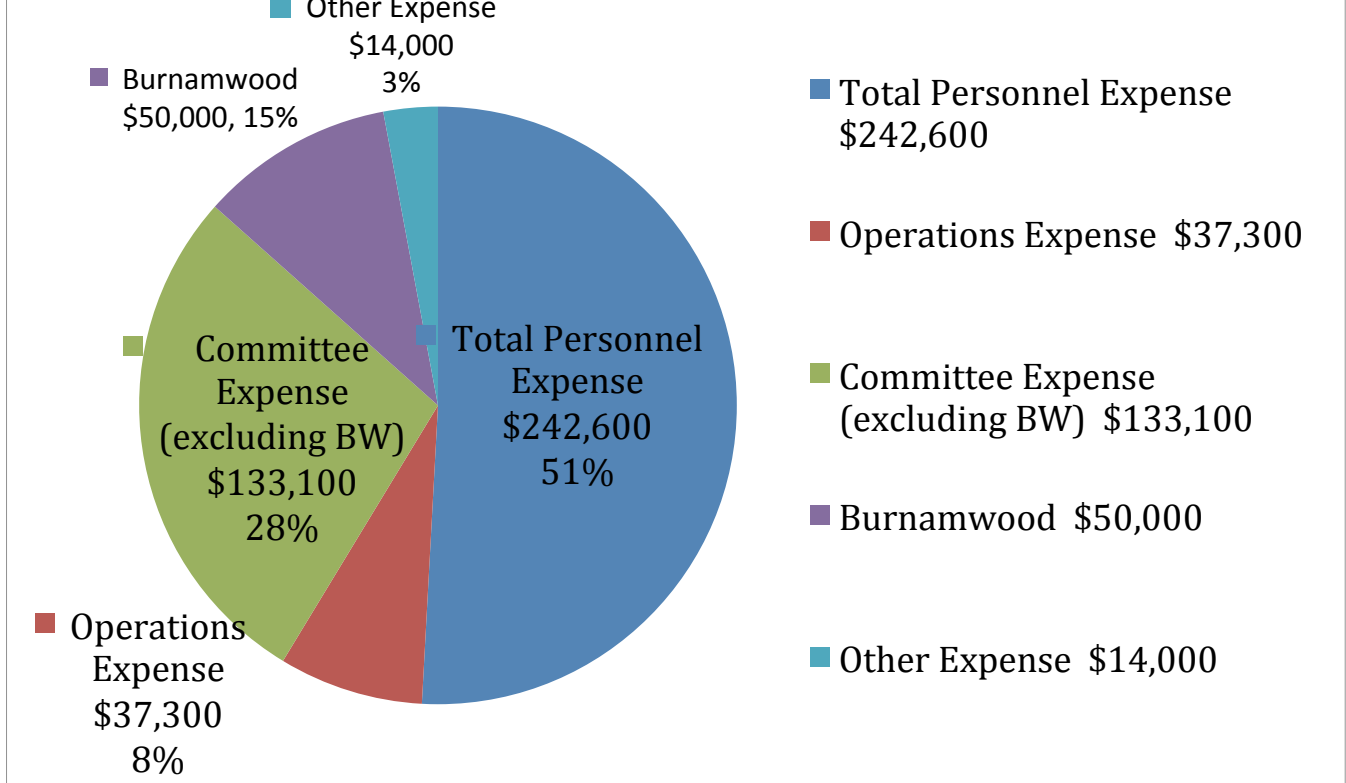
Kevin Turpin, Site Manager at Burnamwood kevin@burnamwood.net

Oversees for the care of the property and facilities at Camp Burnamwood.

SOURCES OF FUNDS



Distribution of Expenses in Operating Budget



**2021 Operating Budget
November 14, 2020**

	ACTUAL INCOME/EXPENSE 2019	OPERATING BUDGET 2020	ACTUAL INCOME/EXPENSE 9/30/20	OPERATING BUDGET 2021
Total Income	\$488,603	\$477,400	\$287,704	\$477,000
Total Expenses	\$409,601	\$477,400	\$272,650	\$477,000
Balance (Deficit)	\$79,003	\$0	\$15,053	\$0

**Burnamwood
2021 Burnamwood Subsidiary Budget
November 14, 2020**

	ACTUAL INCOME/EXPENSE 2019	BURNAMWOOD BUDGET 2020	ACTUAL INCOME/EXPENSE 9/30/20	BURNAMWOOD BUDGET 2021
Total Income	\$192,356	\$110,000	\$46,790	\$110,000
Total Expenses	\$214,802	\$110,000	\$74,021	\$110,000
Balance (Deficit)	\$(22,446)	\$0	\$(27,231)	\$0

**Board of Trustees
Annual Report
November 14, 2020**

Information/Property Issues:

1. The Presbytery received information from the Lexington Fayette Urban County Government regarding a proposed easement for a sidewalk to be built on Armstrong Mill at the Korean Church Property. Approved a motion for the acquisition offer from the LFUCG for a permanent easement request (135 sqft.) and a temporary easement (5404 sqft). The total consideration to be paid for the property conveyed is \$1,350. The temporary construction easement within the agreement is for the sole purpose of providing the LFUCG contractor and/or sub-contractor the necessary area to accomplish their work. The temporary construction easement does not include rights for utility relocations outside of the right-of-way limits. Any property that is disturbed will be restored to as good a condition or better than when the construction began.
2. A quitclaim deed was received from Mid Kentucky Presbytery for a church that is being sold in Mid Kentucky, Faith Presbyterian Church, 9800 Stonestreet Rd, Louisville, KY 40272. When it was organized in the 1950s, the church was in Transylvania Presbytery and Transylvania Presbytery's name is on the deed. It was approved for a representative of Transylvania Presbytery to sign the quitclaim deed and convey the property to Mid Kentucky Presbytery.
3. When the First Presbyterian Church in Pineville closed, it was found that the church owned approximately one acre of land located on Laurel Hill in Bell County, Kentucky. From recommendations of the church elders, Administration approved a request to convey this land to James and Teresa Miracle of Pineville, Kentucky for \$100.
4. Approved the request from the United Presbyterian Church of Harrodsburg to sell the property at 101 Mooreland Ave., Harrodsburg, Kentucky (known as the Academy Building) without the normally required appraisal. The motion to approve included a notation that members' agreement to allow the sale, without the usual requirement for an appraisal, was based on the congregation having already received what it believed to be a fair bid; the need for costly restoration in compliance with historic building guidelines; and the understanding that the offer comes from reputable buyers in the community who have renovated and restored other historic buildings in Harrodsburg. This sale also will unencumber the small church and members from the continual upkeep and maintenance on a building that is not fulfilling a current mission of the church.