



Presbytery of Transylvania

God calls Transylvania Presbytery to support and encourage the mission of God in the particular context of the congregations and communities in which we have been called to serve as the body of Christ. Recognizing that we are a body of diverse members connected by our common bond in Jesus Christ, and empowered by the Holy Spirit, we strive to work together to...



- **WITNESS** to the love of the triune God by what we say and do;
- **NURTURE** all who are called to follow Christ, and
- **SERVE** all people impartially, recognizing that all we have and all we are belongs to God.



Transylvania Presbytery is:

- Where the Spirit unites us “across the woods” (English translation for the Latin Transylvania)
- At the heart of the history of Kentucky Presbyterianism
- 71 Congregations scattered over 56 counties in Central and Eastern Kentucky, each made stronger through our connection with one another
- Diversity and beauty of the Bluegrass and the Mountains



The Presbytery budget is supported by two main sources of income:

- Per-Capita Assessments
- Unified Mission Giving



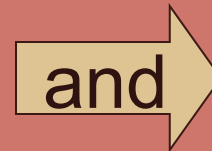
Together, Per Capita
and Unified Mission
Giving make up 63% of
the Presbytery's total
operating revenue each
year.



Additional income comes through:

 Interest on Investments

 Dividends from 412 Rose
Street Investment



 Designated Giving

 Designated Investments



What is Per Capita?

Per capita is an opportunity for all communicant members of the Presbyterian church through the governing bodies to participate:

Equally
Responsibly
Independently

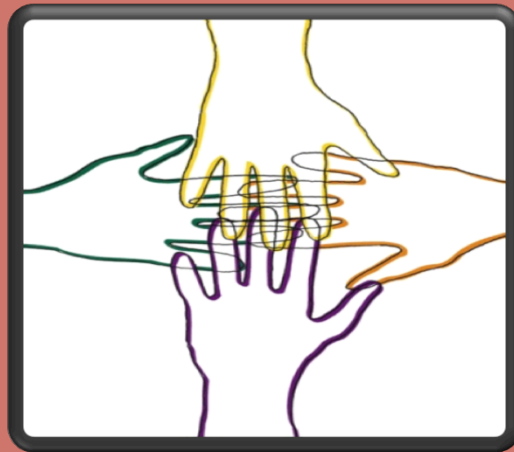


The payment of the per capita
apportionment can be seen
as a sign of healthy relationships
within the church, giving
tangible witness to the unity and
wholeness promised to us
in Jesus Christ.



Who Pays Per Capita?

Congregations pay an annual amount of money per church member — per capita apportionment — to their respective presbyteries.



Why does the per capita rate differ among presbyteries?

Each presbytery begins with the General Assembly per capita rate and adds the amount needed to support its specific mission and administrative functions.



**2021 BREAKDOWN OF
PER CAPITA APPORTIONMENT FOR
TRANSYLVANIA PRESBYTERY**

Presbytery \$25.51

Synod \$3.98

GA \$8.98

Total \$38.47



- \$8.98 per member is forwarded to our national church office
- \$3.98 per member is forwarded to our Synod
- \$25.51 per member stays in Transylvania Presbytery



The assessment is based upon the membership of each church, determined from the statistical report submitted by the church in the previous year.



For example, the 2021 per capita is based on the membership reported on the 2019 Annual Statistical Reports.



Our Presbytery contributes
the appropriate amount to the
national church and the
synod, regardless of the
existence of or timing of
payments from member
churches.



The per capita assessment is not used to fund mission programs on the national, synod or presbytery level. It exists solely to assist in the payment of the basic necessities of our institutional existence.



The concept underlying the per capita assessment is that every Presbyterian should fairly participate at the same level to allay these very fundamental and unavoidable expenses.



What do your Per
Capita Dollars
Buy?



Within the Presbytery, Per Capita dollars pay for the cost of :

- Presbytery operations
- Administrative personnel
- Presbytery meetings
- Permanent and special committees of the Presbytery
- The Office of the Stated Clerk
- The Coordinating Commission



On the Synod and General Assembly Level, Per Capita dollars pay for the same kinds of office and administrative expenses, plus:

- The Church Leadership Connection, which assists local Pulpit Nominating Committees in the matching of pastors and churches.



What About Unified Mission Giving?



What is Unified Mission Giving?

AND

What do these dollars buy?



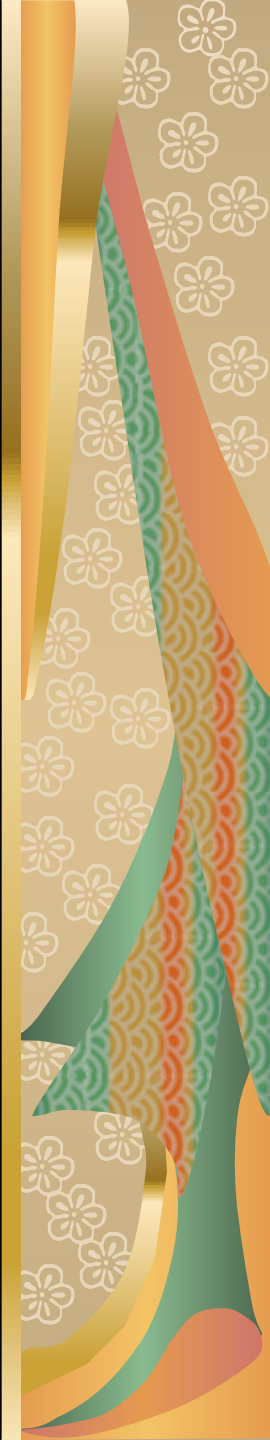
Our Unified Mission Dollars Support

- missionary salaries and benefits
- gifts or grants to ecumenical agencies
- overseas partners [churches, hospitals, schools]
- dollars to provide for resources and services to congregations and mission governing bodies.



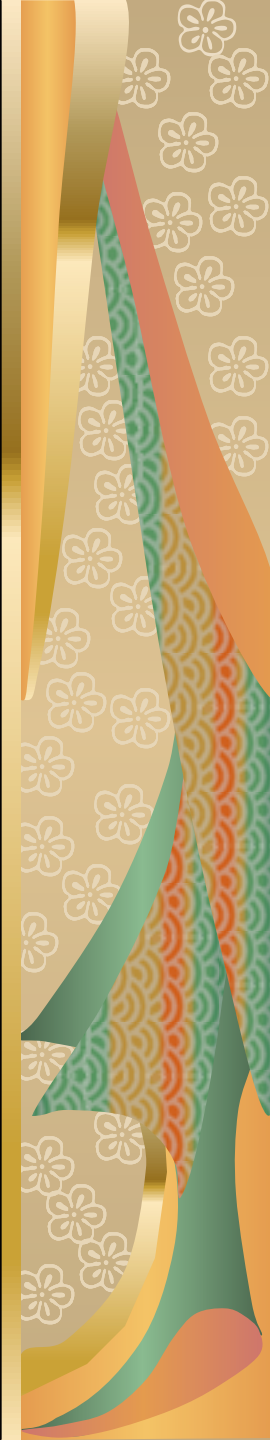
With So Much Local Need, Why Should We Send Money Out of the Neighborhood?

- In Matthew 25 Jesus talks about “the least of these who are member of my family” and how our loving care of them is our care of Christ Himself.



With So Much Local Need, Why Should We Send Money Out of the Neighborhood?

- In The Great Commission we are sent to make disciples “of all nations.”
- Our mission is both local and universal.



So what happens to the unified mission giving sent to the Presbytery?

- 78% is kept in the Presbytery
- 17% is sent to GA
- 5% is sent to the Synod

These percentages are set by action of Presbytery each year at the last presbytery meeting of the year.



The unified mission contributions from our congregations fund the following programs in the presbytery:



The Mission Ministry and it's Programs

- Church Development,
Transformational and
Evangelism Grants for
Congregations
- Mission Interpretation
Programs



■ Leadership Development through various retreats and conferences

■ Congregational Support (Mission Studies, Strategic Planning, Spiritual Formation)

■ Mission Grants to Congregations

■ Peacemaking Grants to Congregations



In 2020, the Presbytery was able to award \$500 grants to all of our churches to help with hunger related needs due to the pandemic. Also, hunger and peacemaking grants were awarded to the following projects in our congregations:



Georgetown (Amen House)
(Summer Reading)

Isom (Backpack Ministry)

Midway (Backpack Ministry)

Second-Lexington (Canaan House)
(A Cup of Joe)
(Westminster Village)

Stanford (Barley Basket)

Versailles (Backpack Ministry)



Burnamwood Camp & Conference Center



Youth Triennium and Scholarships



Kentucky Council of Churches



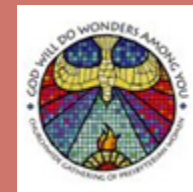
Campus Ministry in the Presbytery



Presbyterian Women



All
Women
in the church



Beyond the Budget

Presbytery, Synod and
General Assembly also
act as the organizational
structure to channel
other mission dollars.



Individual Presbyterians and
Congregations are anxious to
respond to needs around the
world through responsible helping
agencies.



When there is a flood in
Houston; a tornado in West
Liberty or a hurricane in
Puerto Rico— we want to help
our sisters and brothers.



But where can we send our
donations with the
CONFIDENCE that the ones
we want to help will be the
beneficiaries of our support?





The Presbyterian Church – through our Presbytery, Synod and General Assembly structure, has a long and proud history of world-wide missional witness.



Very low administrative cost,
and an established world-wide
network of mission partners
enables quick and effective
response in emergencies, and
continued care over years of
rebuilding communities.





PRESBYTERY OF TRANSYLVANIA

*Calling people to faith and service
in the name of Jesus Christ.*

The same confidence and professionalism is provided as Transylvania Presbytery handles designated gifts within our region.

Gifts from the congregations to various Presbyterian causes are received by the presbytery and passed on monthly to the designated cause such as Buckhorn, Burnamwood, Living Waters for the World, Uspiritus, etc.



Burnamwood is a cause near to
the heart of many in
Transylvania.



Unified Mission Giving Provides 45% of Burnamwood's Annual Budget:

Unified Mission Giving (from the Presbytery's operating budget) 45%

Camper Fees 20%

Camp Rentals 16%



19% of the revenue to operate Burnamwood each year comes from the generous designated gifts of congregations and individuals.



Whether your gifts come through:

Per-Capita

Unified Missions

Designated Giving

Transylvania Presbytery works hard to insure that every dollar is put to use in service to Jesus Christ in our region, our nation, and around the world.



Everything we do together is made possible because of the gifts from congregations. We thank you for your generosity and commitment to our shared Presbyterian ministry. Our dollars were given to us by God.



THANK YOU!

Your dollars are at work in Transylvania Presbytery in helping each congregation to be the best Presbyterian Church it can be by calling people to faith and service in the name of Jesus Christ.



www.transypby.org

You can DONATE NOW on the
Presbytery's website:

<https://transypby.org/paypal/>

Or by check to:

Presbytery of Transylvania
P.O. Box 23580
Lexington, KY 40523



